



## Homeward Path Development Update

April 16, 2024

Evan Henspeter, Director, Social Services  
Madeline Kastler, Deputy Director, Social Services

1

### Agenda



- Development Process Overview
- Community Engagement
- Site Review Panel
- Board Feedback/Direction

2

## Development Process



Phased approach:


- Individual meetings with cities
- Broad public education and engagement on need for shelter
- Panel to recommend site(s) for board consideration, based on identified criteria

Estimate 12-month timeline for site selection after meetings begin

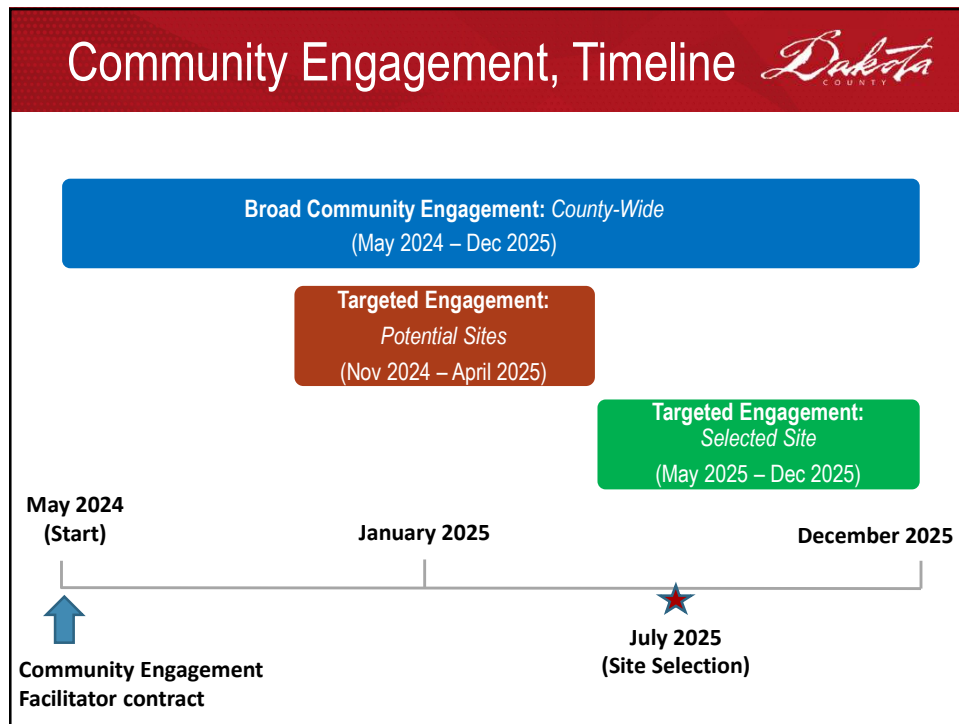
3

## Estimated Timeline



- ☒ January 9th: Board feedback and direction
- ☒ February: Begin planning public engagement process
  - ☒ Commissioner outreach to cities
  - ☐ Community engagement  **We are here**
  - ☐ Panel to review sites and make recommendation
- ☐ Mid-2025: Site selection by Board
- ☐ Site and program development (timeline TBD)

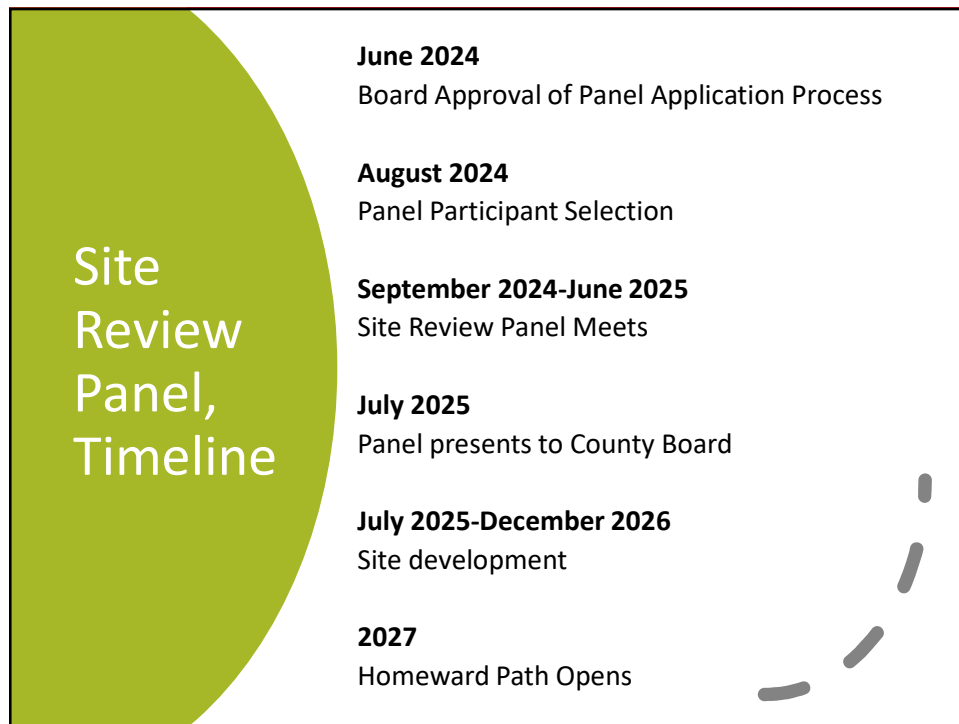
4



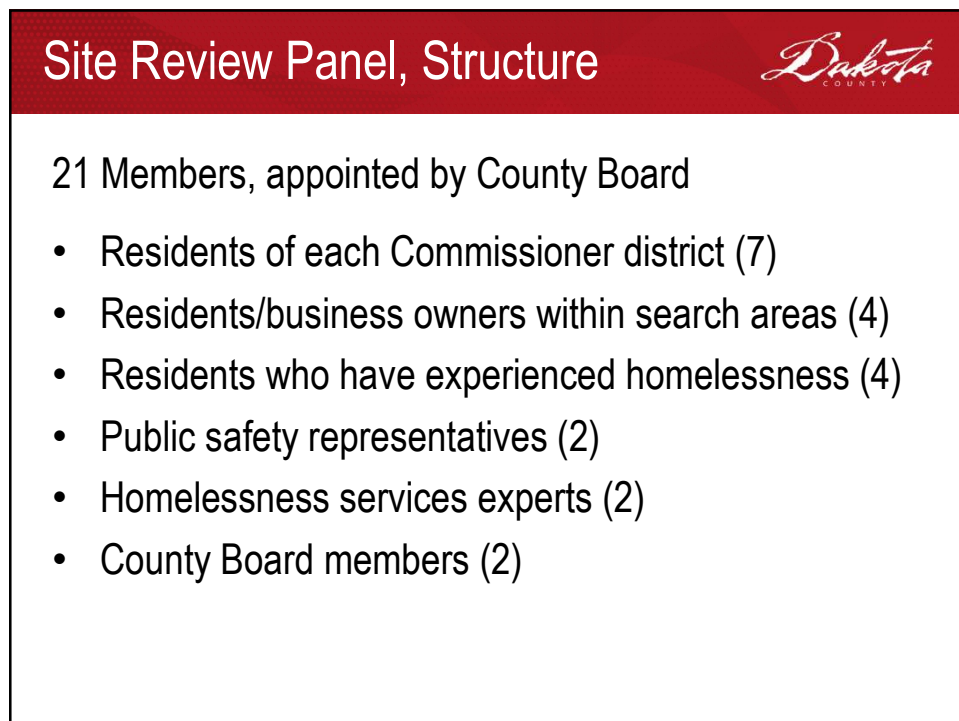
5



6



7



8

## Risks of Current Location



- Could lose access to hotel space
- Lack of control over building, space, hotel staff, hotel guests
- Safety concerns

Contingency planning underway with County Risk Management

9

## Discussion



- Feedback on Community Engagement process
- Direction for Site Review Panel

10