



KEY FINDINGS

- Dakota County is lacking in its share of the Metro area's regional park visitation.
- Dakota County Parks and Greenways are under-represented by youth, people of color, lower-income individuals, and women.

Dakota County
Parks would need
3,288,977 more visitors
to meet its regional suburban
share of visitation
in 2022.

2021 Visitor Snap Shot



	Under - Represented		On - Target		Over - Represented	
	PARKS	GREENWAYS	PARKS	GREENWAYS	PARKS	GREENWAYS
AGE						
12 - 17	✓	✓				
18 - 24	✓	✓				
25 - 34			✓	✓		
35 - 54					✓	✓
55 - 74					✓	✓
75 +	✓	✓				
HOUSEHOLD INCOME						
Less than \$40,000	✓	✓				
\$40,000 - \$79,999	✓	✓				
\$80,000 +					✓	✓
GENDER						
Male					✓	✓
Female	✓	✓				
RACE						
People of Color	✓	✓				
White					✓	✓
ETHNICITY						
Hispanic/Latino	✓	✓				

Data from 2021 Met Council Regional Parks and Trails System Visitor Study and 2022 US Census ACS Estimates, Table DP05.

AGENCY COMPARISON

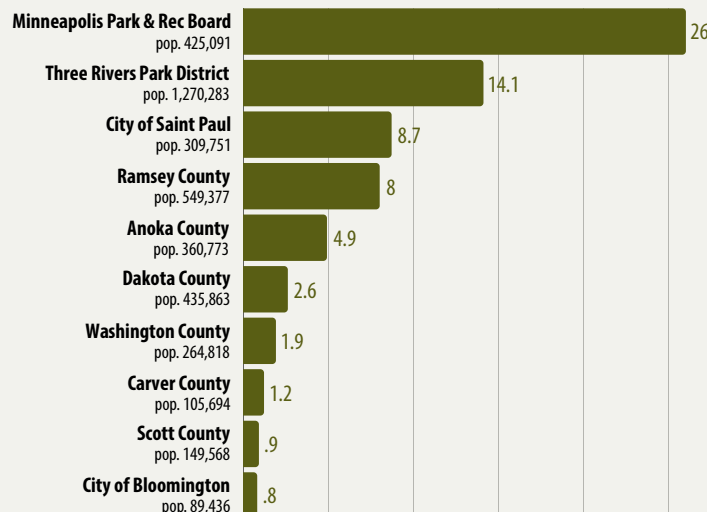


Figure 1.1 2022 Visits by Park Agency, in Millions*

Despite being the third most populous area of the ten implementing agencies, Dakota County is 6th in visitation.

*Does not include Thompson County Park

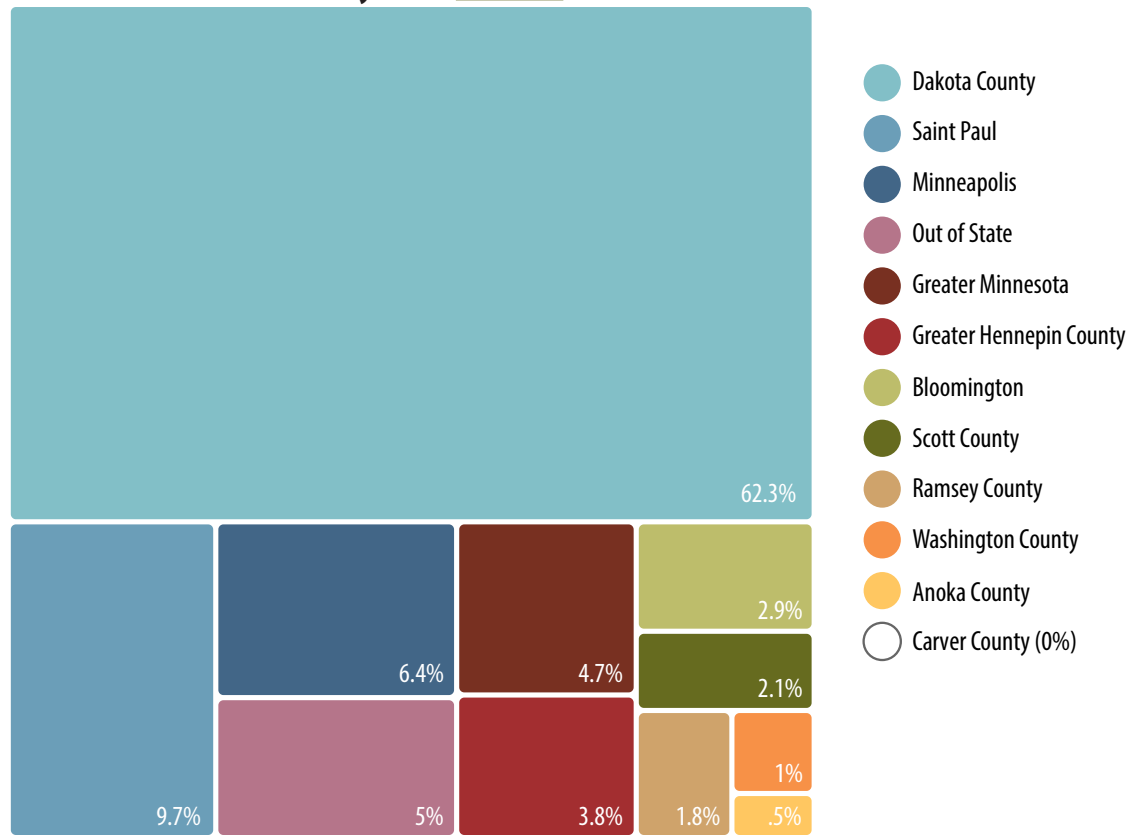
Data Source: 2021 Met Council Annual Use Estimates, July 2023.



KEY FINDINGS

- The majority of visitors to Dakota County parks live in Dakota County.
- Of the agencies that Dakota County residents visit besides Dakota County Parks, Scott County, Saint Paul, and Washington County Parks are visited most by residents.
- Park export rate is no longer the issue it was, at 37.7% in 2021 versus 68% in 2008.
- Favorite activities to do in Dakota County Parks: 1st: Hike/walk, 2nd: Biking, 3rd: Mountain Biking, 4th: Dog walk/dog park, and 5th: Running.

Where do Dakota County Park visitors live?



What park districts are Dakota County residents visiting?

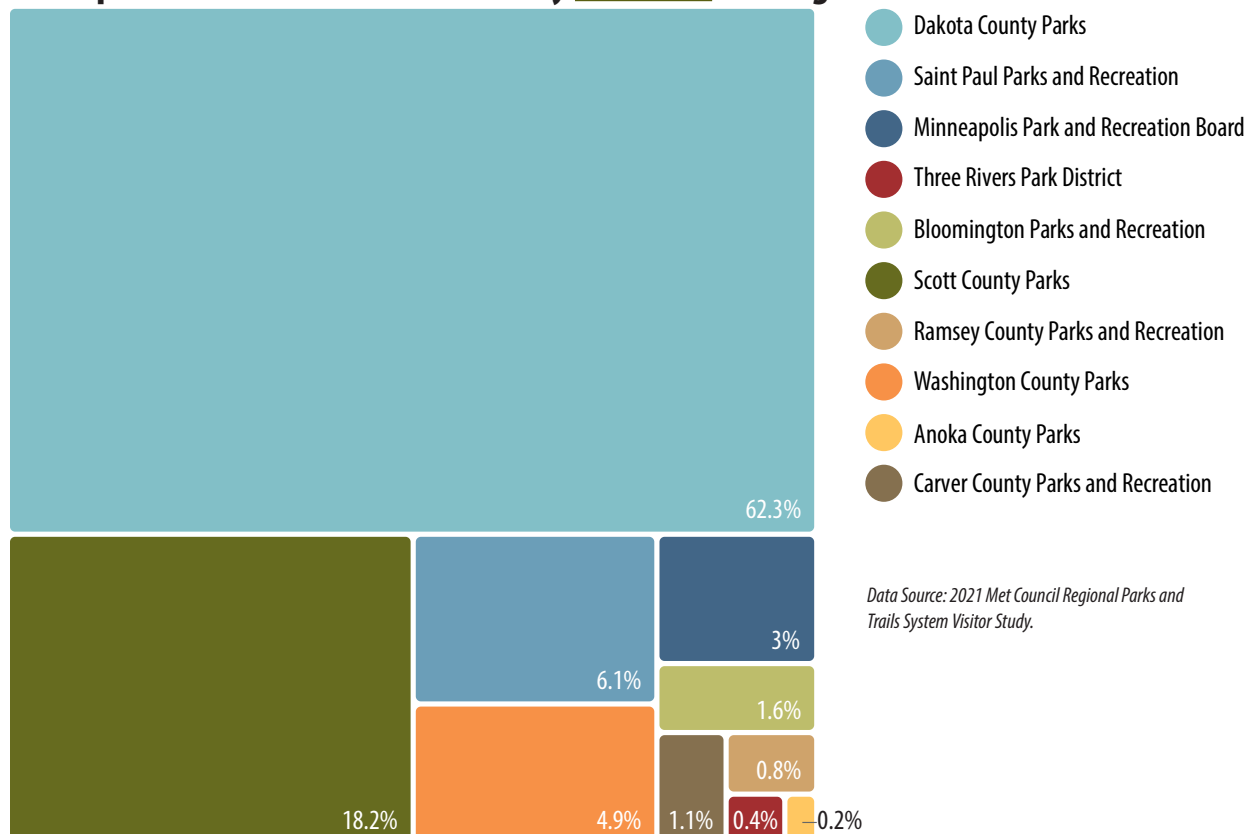


Figure 1.2 Percentage of visitation local to agencies.

Agency	Percentage of local visitors
Anoka County	70.4%
Three Rivers Park District	66.5%
Scott County	64.9%
Minneapolis Park & Rec. Board	63%
Ramsey County	63%
Bloomington	62.4%
Dakota County	62.3%
Washington County	62.1%
Saint Paul	54.7%
Carver County	47.9%

Data Source: 2021 Met Council Regional Parks and Trails System Visitor Study.

Figure 1.3 10-Minute Drive-Time to Dakota County Parks Map

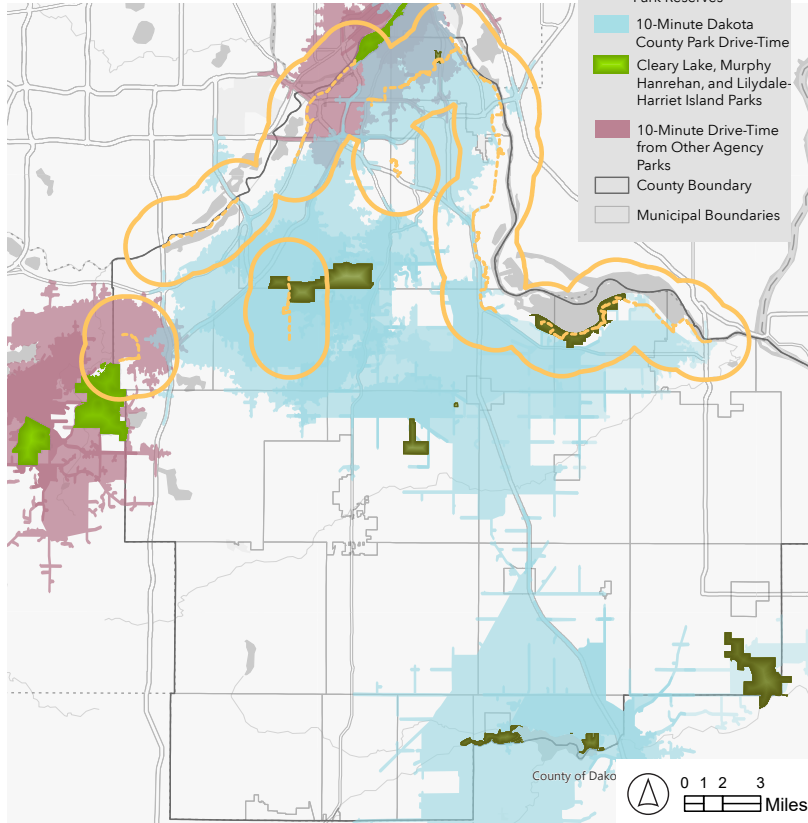
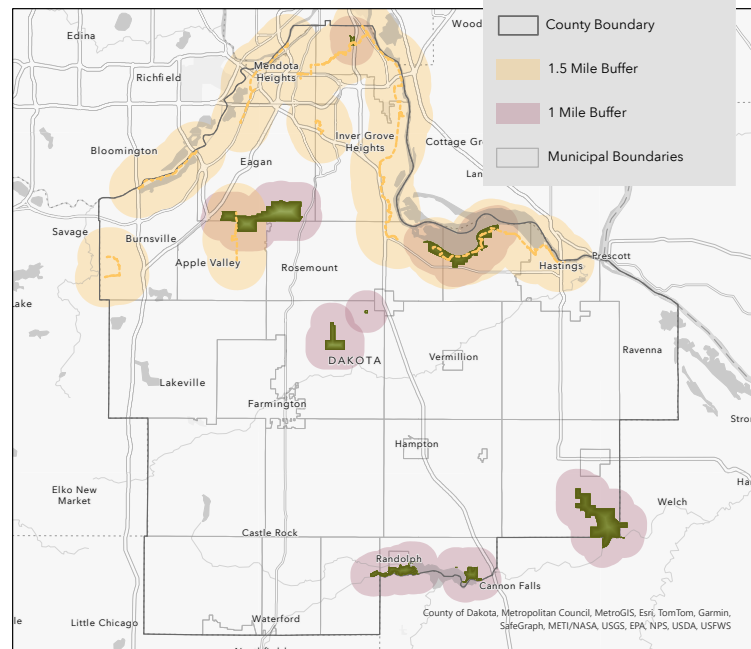


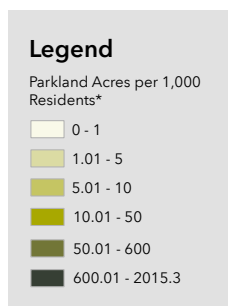
Figure 1.4 Walkable Distance to Existing Dakota County Parks and Greenways Map



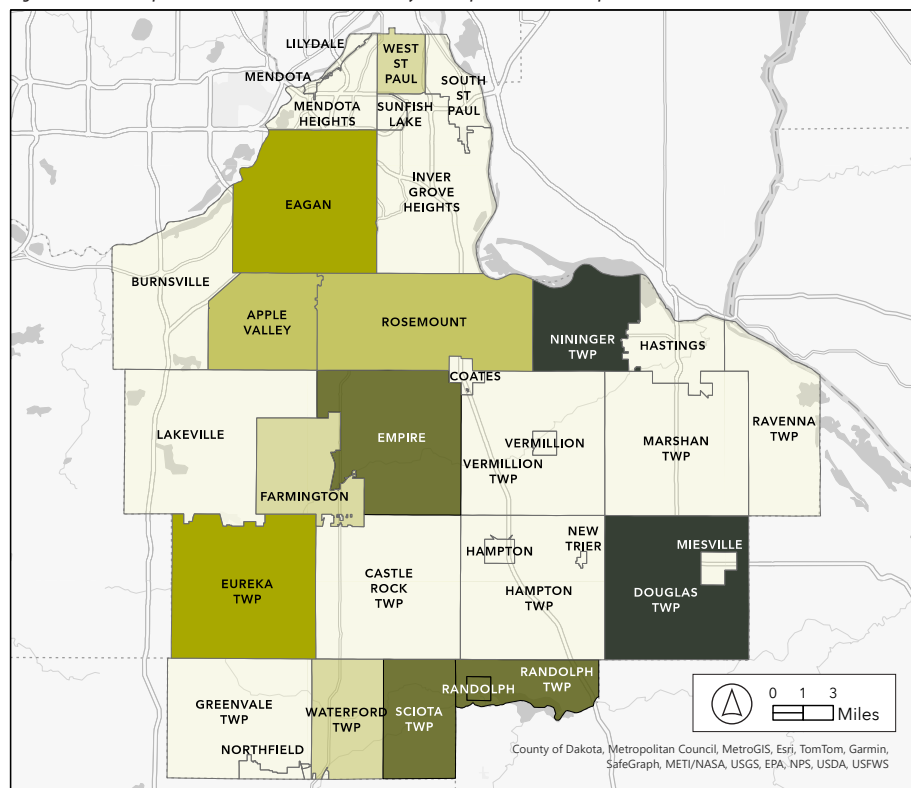
Parks accessible by transit: Thompson County Park
Transit serves Mississippi River Greenway, River to River Greenway, Minnesota River Greenway, and North Creek Greenway

0 1 2 3 Miles

Figure 1.5 Parkland per 1,000 Residents in Dakota County Municipalities, 2023, Map



*Includes Dakota County Parks, Dakota County Park Reserves, and Dakota County Park Conservation Areas.



Some of the most populous municipalities in the county are lacking in regional park acreage.



KEY FINDINGS

- The county is committed to promoting inclusivity and diversity with its staff, programming, and planning processes.
- Dakota County Parks has made focused outreach efforts to reach target populations, including Spanish-speakers, partnership with community leaders who represent Latinx, Black, Indigenous and Communities of Color, and hiring multilingual staff.
- Dakota County Parks utilized a Met Council Equity Grant to fund equitable community engagement for Creating Equitable Spaces Along the Mississippi River Greenway, including a bilingual survey in Spanish.
- The County hired an Indigenous Liaison in 2023.
- Parks compensates people for their time when working with community members on programming/partnerships.



Pt. 1 Dakota County Parks Current Equity Work

Specific outreach programs that have been created to address equity in the outdoors include: partnership with Caminatas Domingueras, District 196 Diversity in Skiing Program, Nature Walks with Latino Families series, Fiesta en la Nieve, Somali Girls Leadership Group Day in the Park, and the Community Liaison Program.

People of Color in Dakota County visited County Parks at a rate of 33 % of their expected representation and visited County Greenways at a rate of 28.4% of their expected representation.



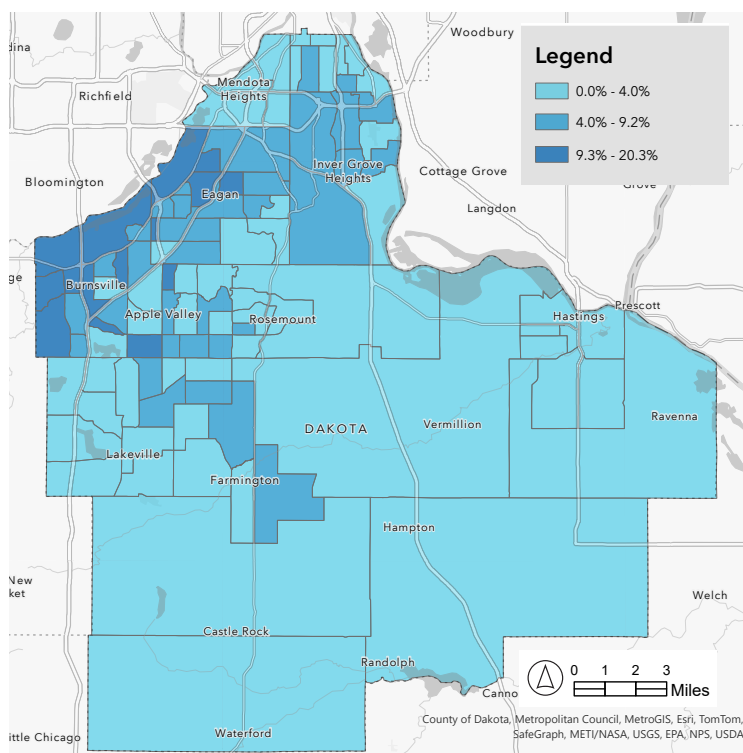
Pt. 2 Race & Cultural Equity

Findings from the Met Council Report (2014): "Regional Park Use among Select Communities of Color"

Preferred Outdoor Activities (from Focus Groups):

- Asian Immigrant/Asian American focus groups identified their top three preferred activities as walking, fishing, and rest or relaxation.
- African Immigrant focus groups most frequently noted playground use, walking, and being with family.
- Hispanic participants most frequently noted celebrations and parties, followed by picnicking and/or barbecuing, and spending time with family.
- African American participants identified picnicking and/or barbecuing as the most frequent preferred activity, followed by biking and basketball.
- Walking, playground use and swimming or going to the lake were the top three most frequently noted preferred activities among diverse composition focus groups.

Figure 3.1 Percentage of Residents Who Speak English Less Than "Very Well," 2021, Map



Data Source: US Census Bureau, ACS 5-Year Estimates, 2021, Table DP02.

30% of Dakota County adults whose income is below 200% of the poverty line have been in a situation where they have felt they are not accepted because of their race, ethnicity, religion, or immigration status.

Data Source: Dakota County Adult Health Survey, 2023.

PHYSICAL ACTIVITY + OBESITY



28% of Dakota County adults whose income is below 200% of the poverty line do not engage in any leisure-time physical activity.

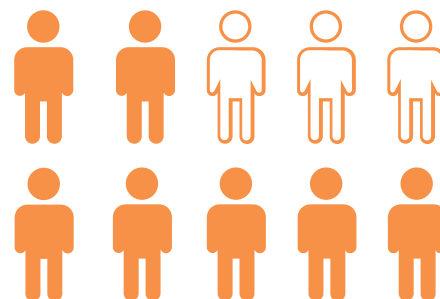
- Only 31% of adults below 200% of the poverty line met “Healthy People Physical Activity Guidelines,” i.e. moderate exercise 30 or more minutes, 5 or more days per week; vigorous exercise 20 or more minutes, 5 or more days per week; or both; during an average week.
- Only 46% of all Dakota County adults surveyed met these standards.



32% of all Dakota County adults surveyed walked or biked to get to and from places in 2023.

- Walking and biking was low for those with lower and higher incomes (33% with incomes below 200% of the poverty line walked or biked and 31% at or above 200% of the poverty line walked or biked).

Data Source: Dakota County Public Health, Dakota County Adult Health Survey, 2023.

Pt. 2
Health Equity

71% of Dakota County students were physically active for at least 60 minutes, three or more days a week in 2022.
On average, 18% of students were physically active for at least 60 minutes every day.
However, this is a decrease from 2016, when about 20% of students engaged in 60 minutes of physical activity daily.

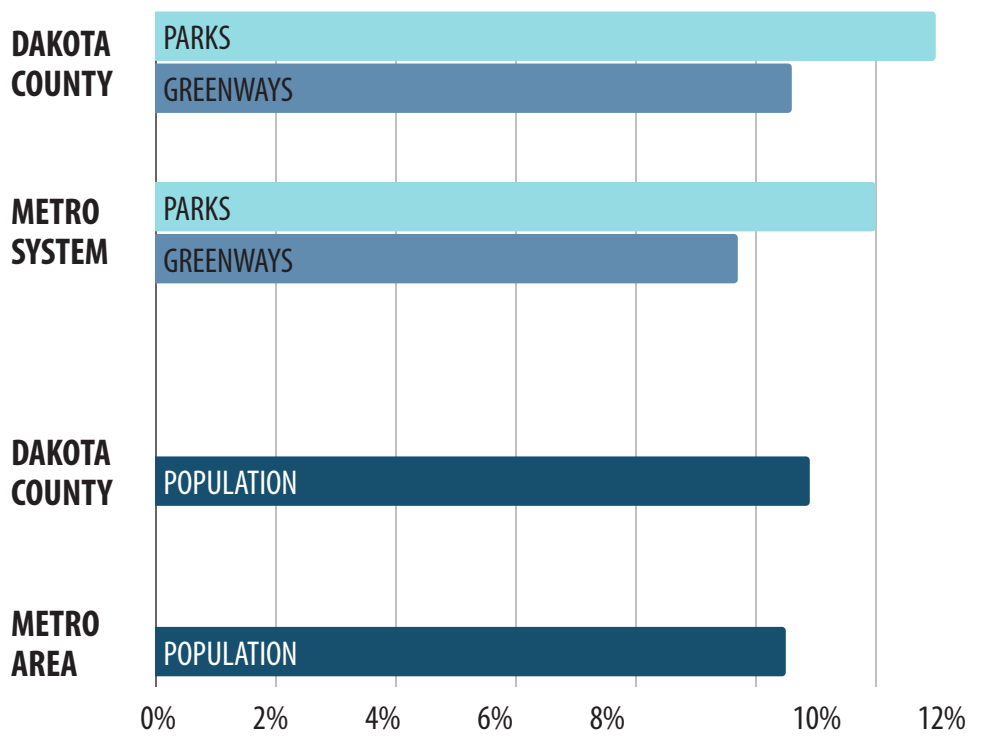
Pt. 4
ADA Accessibility



KEY FINDINGS

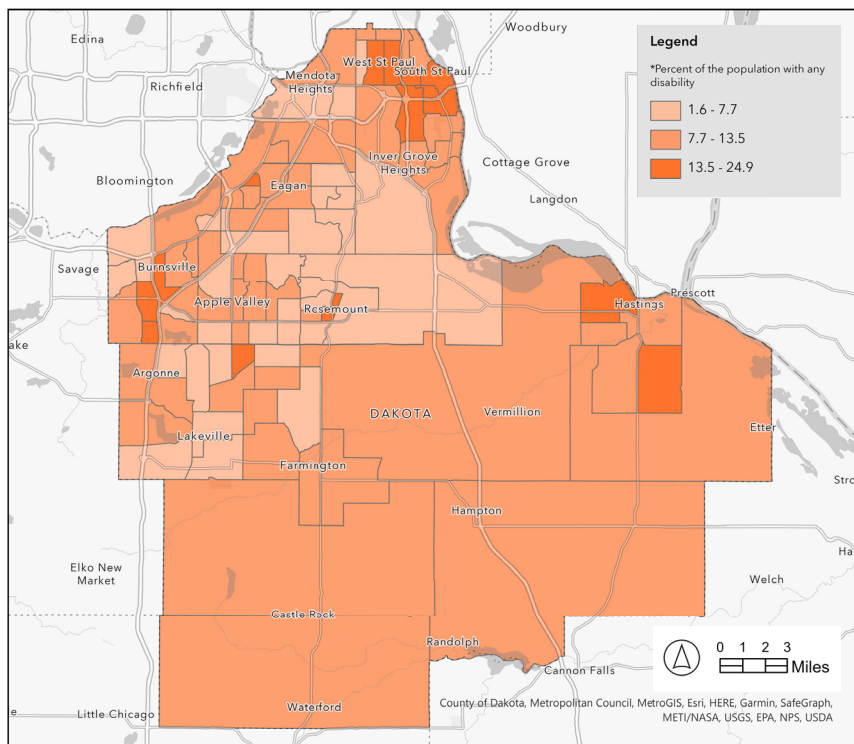
- 10.9% of Dakota County residents have a disability.
- Most prevalent disabilities: Cognitive difficulty (5%), independent living difficulty (4.9%), and ambulatory difficulty (4.5%).
- 18.2% of those 65-74 years of age have a disability; 38.2% of those 75+ have a disability.
- About 12% of groups visiting a Dakota County Park surveyed by Met Council had a resident with a disability.
- Dakota County meets state standards for accessibility for new facilities.
- Dakota County has added accessible trails in the last 10 years.

Figure 4.1 Percentage of Residents with a Disability visiting Dakota County Parks and Greenways, Metro Regional Parks and Greenways, in Dakota County, and in the Metro Area, 2021 & 2022



Data Sources: 2021 Met Council Regional Park and Trail System Visitor Study and US Census Bureau, ACS 5-Year Estimates, 2022, Table DP02.

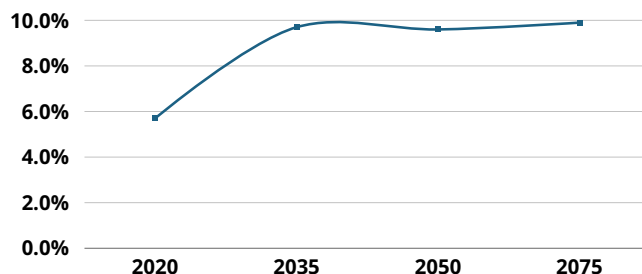
Figure 4.2 Percentage of the Population with Any Disability in Dakota County, 2021, Map



Data Source: US Census Bureau, ACS 5-Year Estimates, 2022, Table DP02.

The number of visitors with disabilities in Dakota County is similar to the number in the Regional System, and both are similar to the region's proportion. Dakota County Parks have a slightly higher visitation of residents with disabilities.

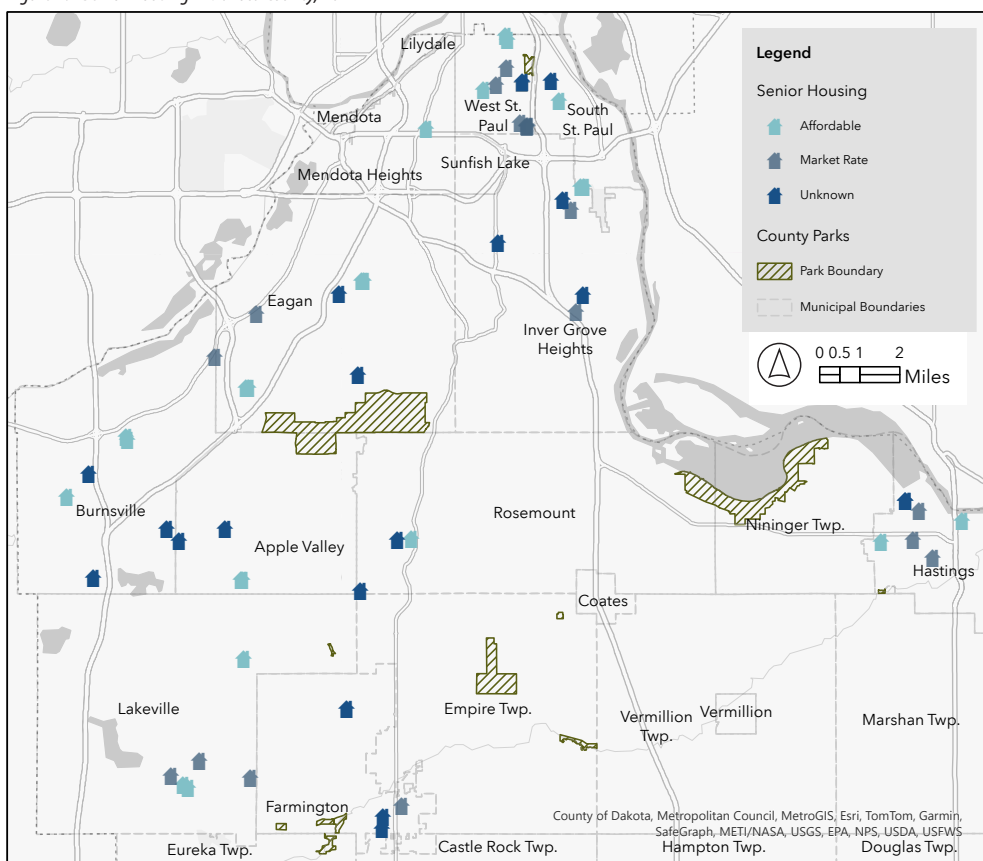
Figure 4.3 Percentage of Dakota County Residents age 75+ in 2020, 2035, 2050, & 2075.



Data Source: Minnesota State Demographic Center, Long-Term Population Projections for Minnesota, 2020.

Thompson County Park is currently the Dakota County Park in proximity to the most senior housing units in the county.

Figure 4.4 Senior Housing in Dakota County, 2022



Data Source: Dakota County GIS, 2022.

Dakota County Parks and Greenways In Proximity to Elderly & Disabled Populations

Residents with an ambulatory difficulty	River to River Greenway (7.2% of people within 1 mi.)
	Spring Lake Park Reserve (4.7% of people within 3 mi.)
Residents with any other disability	River to River Greenway (6.3% of people within 1 mi.)
	Whitetail Woods Regional Park (5.3% of people within 3 mi.)
Residents Age 65+	Big Rivers Regional Trail (27.5% of people within 1 mi.)
	Spring Lake Park Reserve (17.4% of people within 3 mi.)

Data Source: Met Council Regional Parks and Trails Equity Tool, ACS 2019.

Pt. 5 Youth

Dakota County Parks with Play Areas:

- Thompson County Park*
- Lebanon Hills Regional Park
- Spring Lake Park Reserve
- Whitetail Woods Regional Park
- Lake Byllesby Regional Park*

*Play areas with inclusive elements

City-Owned Nature Play Areas in Dakota County:

- Patrick Eagan Park (Eagan)
- Terrace Oaks East (Burnsville)
 - Schwarz Pond Park (Rosemount)

KEY FINDINGS

Feedback from *Dakota County Parks Awareness and Promotion Plan* on youth and parks:

- Every community engagement group (except the American Indian group) discussed visiting the parks for spending time with their families and children.
- Participants with children expressed concern for safety of children with dogs and litter in parks.
- Several family representatives noted that more families would be able to participate in programming if childcare were to be provided.

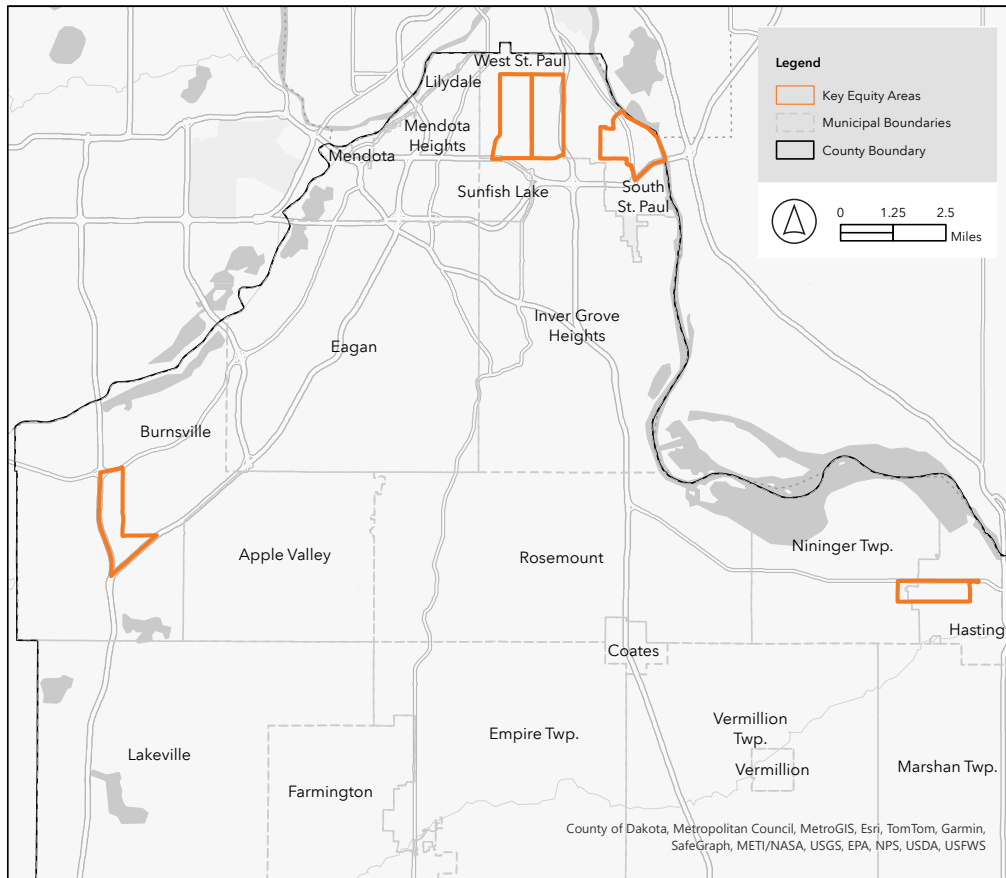
Dakota County Parks and Greenways In Proximity to Children and Youth

Residents under age 15	North Creek Greenway (26% of people within 1 mi.)
	Whitetail Woods Regional Park (22% of people within 3 mi.)
Residents age 15-24	Vermillion Highlands Greenway (15.8% of people within 1 mi.)
	Miesville Ravine Park Reserve (13% of people within 3 mi.)

Data Source: Met Council Regional Parks and Trails Equity Tool, ACS 2019.

*Excludes Thompson County Park

Figure 6.1 Key Equity Areas in Dakota County



Data Source: US Census Bureau, ACS 5-Year Estimates 2021, Tables DP02, DP05; Met Council's Equity Considerations Dataset.

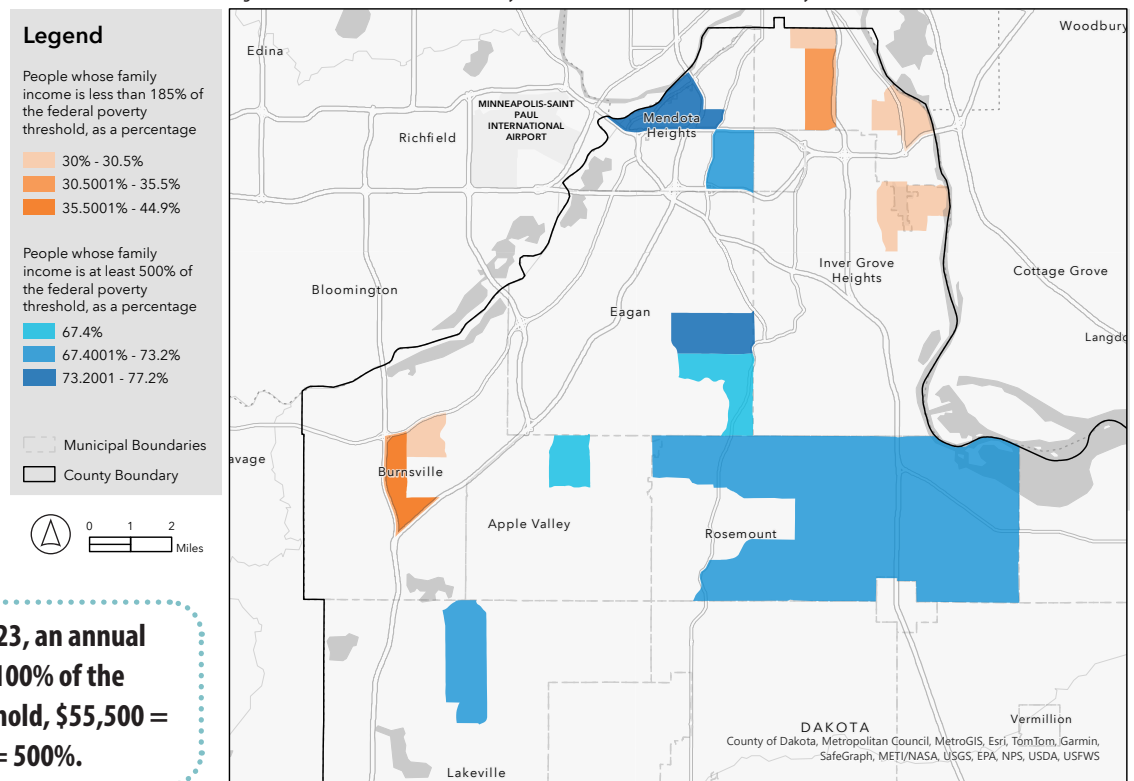
Pt. 6 Income Inequality

Key Equity Areas are Census tracts that are high in two or more of the following categories:

- Proportion of the population with no vehicle
- Proportion of residents who speak English less than "very well"
- Number of people of color
- Proportion of residents with any disability
- People whose family income is less than 185% of the federal poverty threshold

These Key Equity Area tracts are in West St. Paul, South St. Paul, Hastings, and Burnsville.

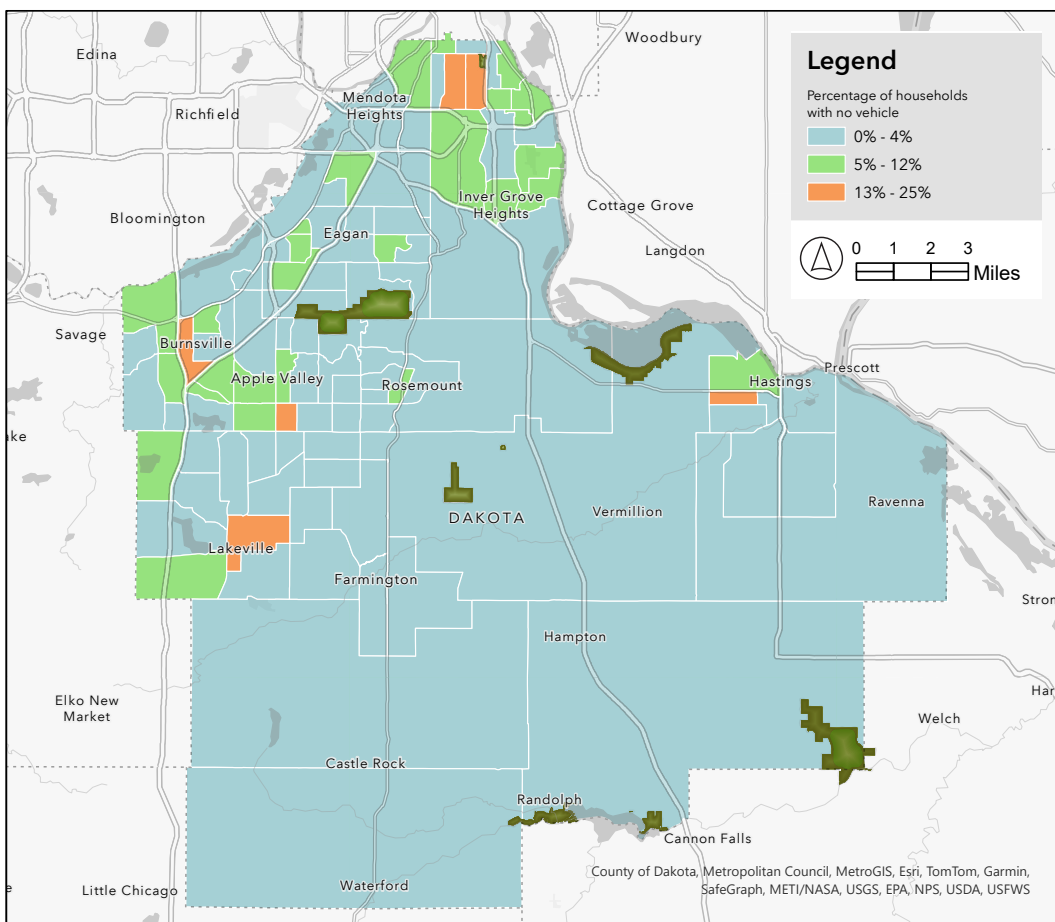
Figure 6.2 Areas of Concentrated Poverty & Concentrated Affluence, Dakota County, 2021



For a family of 4 in 2023, an annual income of \$30,000 = 100% of the federal poverty threshold, \$55,500 = 185%, and \$150,000 = 500%.

Data Source: Metropolitan Council, Equity Considerations for Place-Based Advocacy and Decisions in the Twin Cities Region, 2021.

Figure 6.3 Proportion of Households with No Vehicle, Dakota County, 2021



Residents without vehicle access would have a difficult time reaching some of Dakota County's parks.

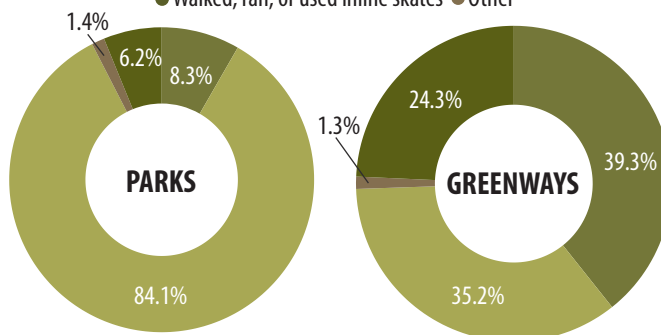
Data Source: US Census Bureau, ACS 5-Year Estimates 2021, Table DP04.

TRAVEL MODE

Figure 6.4 Travel Mode to Dakota County Parks & Greenways

● Bicycle ● Car or other vehicle
● Walked, ran, or used inline skates ● Other

Most Dakota County Park visitors arrive by car or other vehicle and most Dakota County Greenway visitors walk or bike to the trails.



Data Source: 2021 Met Council Regional Parks and Trails System Visitor Study.



Dakota County Parks Facilities

Parks and County Park Conservation Areas

- 7 parks, 6,280 acres
- 7 County Park Conservation Areas, 204 acres



Buildings

- 34 operated buildings
- Square footage of operated buildings: 79,586 sf



Campgrounds

- Lebanon Hills (93 sites)
- Lake Byllesby (83 sites)
- Whitetail Woods (5 cabins)



Youth Camp

- YMCA Day Camp Spring Lake at Spring Lake Park Reserve
 - Held at Camp Spring Lake Retreat Center
 - Archery games, outdoor education, arts, canoeing, swimming



Bathrooms

- 17 permanent and semi-permanent restrooms
- 2 facilities with restrooms available free of use to public, not included above



Play Areas

- 6 play areas
 - 5 for ages 5-12
 - 1 for ages 2-5
 - 1 inclusive play structure
 - 2 nature play areas



Other Facilities

- 1 community garden
- 1 dog park

Figure 7.2 Drivers for Growth: Accessible Lake Loops/Lakeside Trails

Parks	2008	2023	Notes
Lebanon Hills	0	1	McDonough Lake
Spring Lake	0	1	Spring Lake
Lake Byllesby	0	1	Lake Byllesby
Miesville Ravine	0	0	
Thompson	0	1	Thompson Lake
Whitetail Woods	NA	1	Empire Lake
Greenways	2008	2023	
Mississippi River Greenway	0	2**	Lake Rebecca and Spring Lake
Minnesota River Greenway	0	1	Black Dog Lake
River to River Greenway	0	2	Marthaler Lake, Thompson Oaks Lake
Vermillion River Greenway	NA	0	
Rosemount Greenway	NA	1	Horseshoe Lake
Vermillion Highlands Greenway	NA	0	
Lake Marion Greenway	NA	2	Lake Marion, Sunset Lake
North Creek Greenway	0	2	Cobblestone Lake, East Lake
Total	0	14	

Units in italics are new since 2008

** Spring Lake is along both the Mississippi River Greenway and is in Spring Lake Park Reserve

Figure 7.3 Signature Facilities at Dakota County Parks

Dakota County Parks	Signature Facilities
Lebanon Hills Regional Park	Staffed Visitor Center Swimming Beach Trail recreation <ul style="list-style-type: none"> • Mountain bike trails • Equestrian trails • Hiking trails • Cross-country skiing trails
Spring Lake Park Reserve	Mississippi River views and access Bison Indoor event space rental
Lake Byllesby Regional Park	Lake recreation Camping
Whitetail Woods Regional Park	Camper cabins Events Largest lake loop Sledding hill Nature play area
Miesville Ravine Park Reserve	Trout fishing Cannon River access
Thompson County Park	Accessible Playground Community gathering Indoor event space rental

CURRENT PARK OFFERINGS

Figure 7.1 Current Dakota County Park Offerings

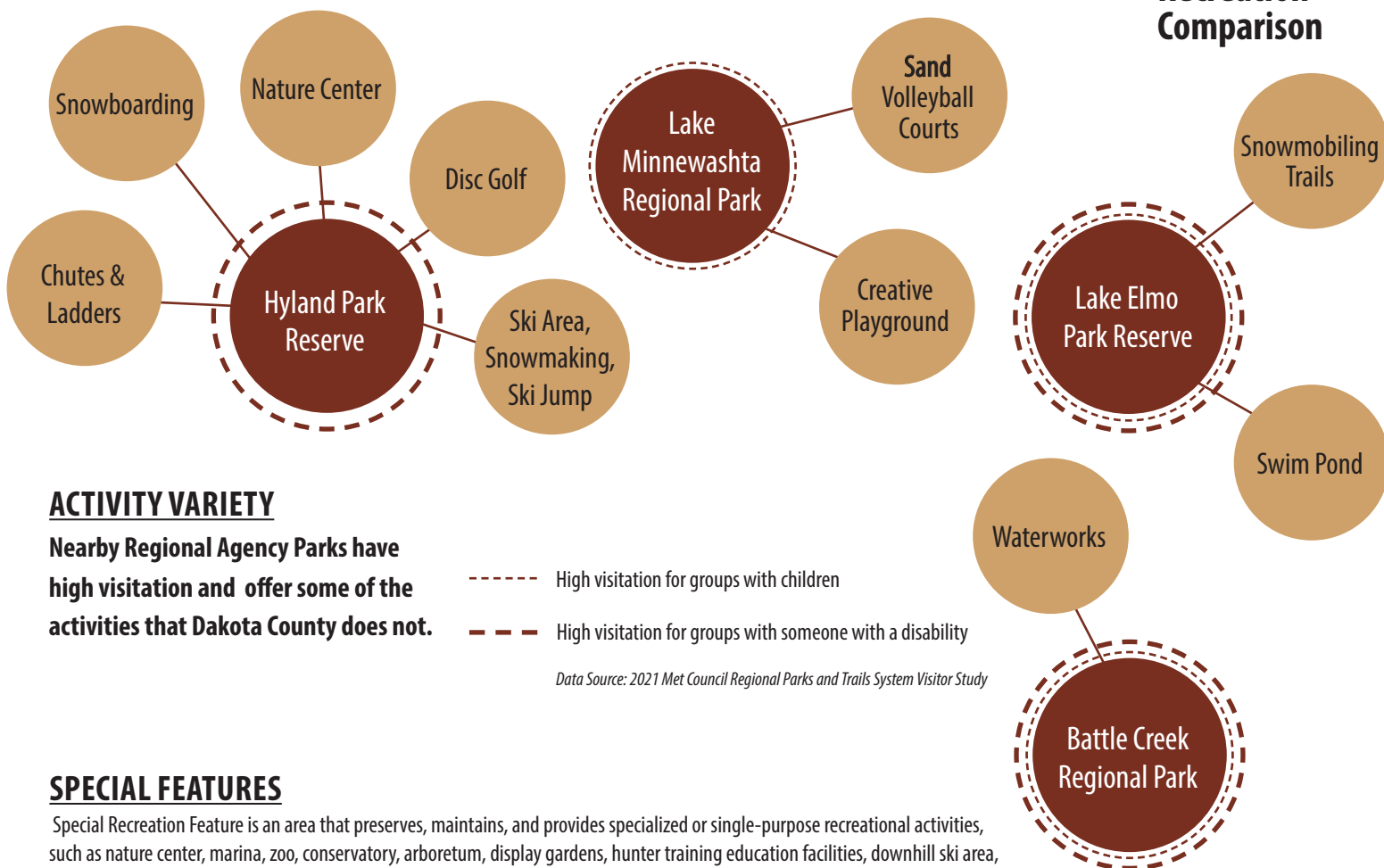
Parks	Picnicking	Fire Ring	Ice Fishing	Visitor Center	Hiking	Snow-shoeing	Dog On-Leash	Biking	Fishing	Geocaching	Dog Sled Trails	Play Areas	Sledding Hill	Cross-Country Skiing
Dakota Woods Dog Park														
Lake Byllesby Regional Park														
Lebanon Hills Regional Park														
Miesville Ravine Park Reserve														
Spring Lake Park Reserve														
Thompson County Park														
Whitetail Woods Regional Park														

Parks	Ice Skating	Kicksledding	Skate skiing	Mountain Biking	Equestrian Trails	Camp-grounds	Nature Education	Archery	Gardening	Swimming	Paddling	Camper Cabins	ADA-Accessible Trail
Dakota Woods Dog Park													
Lake Byllesby Regional Park													
Lebanon Hills Regional Park													
Miesville Ravine Park Reserve													
Spring Lake Park Reserve													
Thompson County Park													
Whitetail Woods Regional Park													

*Equestrian trails in Whitetail Woods available through a partnership with MnDNR at Vermillion Highlands

Dakota County Parks provides lower-cost, nature-based activities.

Recreation Comparison



Data Source: 2021 Met Council Regional Parks and Trails System Visitor Study

ACTIVITY VARIETY

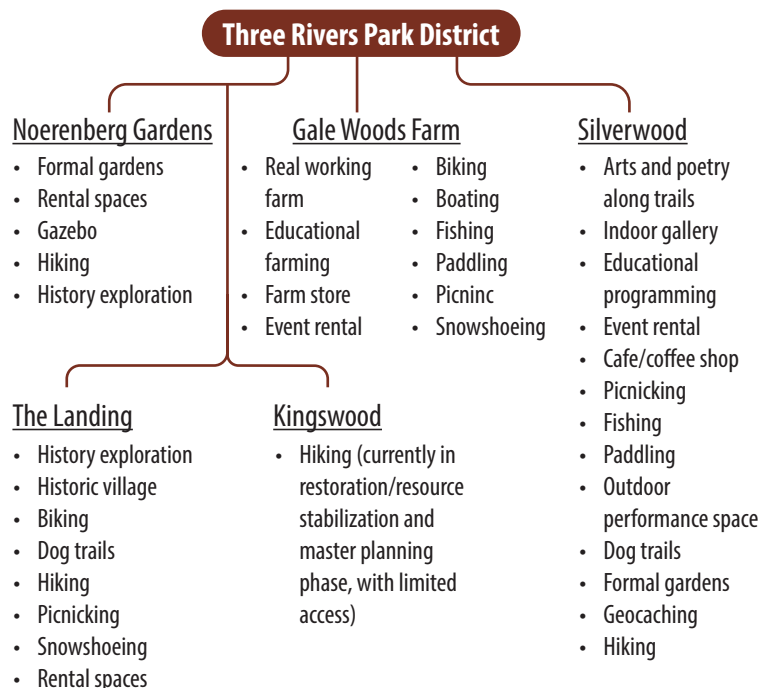
Nearby Regional Agency Parks have high visitation and offer some of the activities that Dakota County does not.

SPECIAL FEATURES

Special Recreation Feature is an area that preserves, maintains, and provides specialized or single-purpose recreational activities, such as nature center, marina, zoo, conservatory, arboretum, display gardens, hunter training education facilities, downhill ski area, sites of historic or archaeological significance, and bridging facilities.

- Metropolitan Council 2040 Parks Policy Plan

What parks have special features in the Regional Park System?



St. Paul Parks & Rec.

Como Zoo & Conservatory

- Zoo
- Como Town rides
- Conservatory gardens
- Special events

Park	2021 Visitation
Como Zoo	1,377,672
Silverwood	394,121
Square Lake	138,317
Gale Woods Farm	130,495
Noerenberg Gardens	98,061
The Landing	33,028
Kingswood	21,879

Washington County Parks

Square Lake

- Canoeing/kayaking
- Fishing
- Grills
- Hiking
- Boat launch
- Swimming beach
- Designated as a "Special Recreation Feature" because of outstanding water quality
- Used by scuba divers

Dakota County would have 1 Special Feature to match its share of the Regional Park System.

NRPA PARK METRICS - AGENCY COMPARISON



Operating Expenditures

- In 2023 we spent about half as much as Minneapolis Park and Rec. Board and about \$20,000 less than Three Rivers Park District.



Personnel

- We have less full-time employees than all of the agencies shown
- Non-full-time employees: we have 27, MPRB has 1,323, and Three Rivers has 75
- MPRB has about twice as many people in programming



Volunteers

- Three Rivers has less volunteers but more volunteer hours
- Minneapolis has more volunteers and ten times as many volunteer hours



Activities / Programming

- Of 18 popular activities, MPRB offers all activities listed, Dakota County offers 5/18 activities, and Three Rivers offers 13/18.
- Most other agencies offer After School Programs, Dakota County does not.
- Most other agencies offer Teen Specific Programs, Senior Specific Programs, and Programs for People with Disabilities.

Activities	Dakota County	MPRB	Three Rivers
Health and wellness education	X	X	X
Safety training		X	X
Fitness enhancement classes	X	X	X
Team sports		X	
Individual sports		X	X
Running/cycling races		X	X
Racquet sports		X	
Martial arts		X	
Aquatics		X	
Golf		X	X
Social recreation events	X	X	X
Cultural crafts		X	X
Performing arts		X	X
Visual arts		X	X
Natural and cultural history activities	X	X	X
Themed special events	X	X	X
Trips and tours		X	X
eSports/eGaming		X	

What we're not doing

that other Metro agencies are:

- Concessions (food and alcohol)
- Social spaces
- Event stage/performance space
- Nature center
- Waterpark
- Athletic facilities
- Lighted areas to use at night
- Bridging Facilities
- Special Feature
- Indoor gathering area or picnic shelter for 200+ people
- Snowmaking
- Ski area
- Art center

NATURE CENTERS

Which Metro agencies offer Nature Centers?

0 Nature Centers	1 Nature Center	3 Nature Centers
Dakota County Parks	Minneapolis Park and Rec. Board	Three Rivers Park District
Carver County Parks	Anoka County Parks	
Scott County Parks	Ramsey County Parks	
St. Paul Parks & Rec.		
Washington County Parks		

Other Nature Center Organizations in the Metro Area:

Dodge Nature Center (non-profit located in West St. Paul, with additional properties in Mendota Heights, West St. Paul, and Cottage Grove)

Carpenter Nature Center (non-profit located in Hastings, MN, and Hudson, WI)

Wood Lake Nature Center (City of Richfield)

Harriet Alexander Nature Center (City of Fridley)

Springbrook Nature Center (City of Fridley)

Westwood Hills Nature Center (City of St. Louis Park)