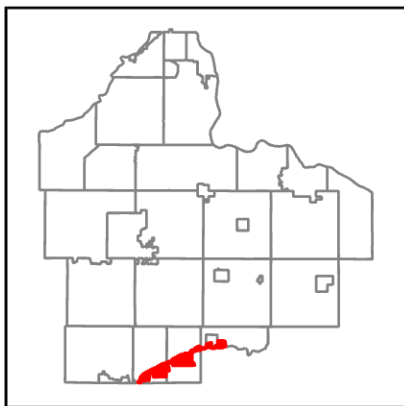
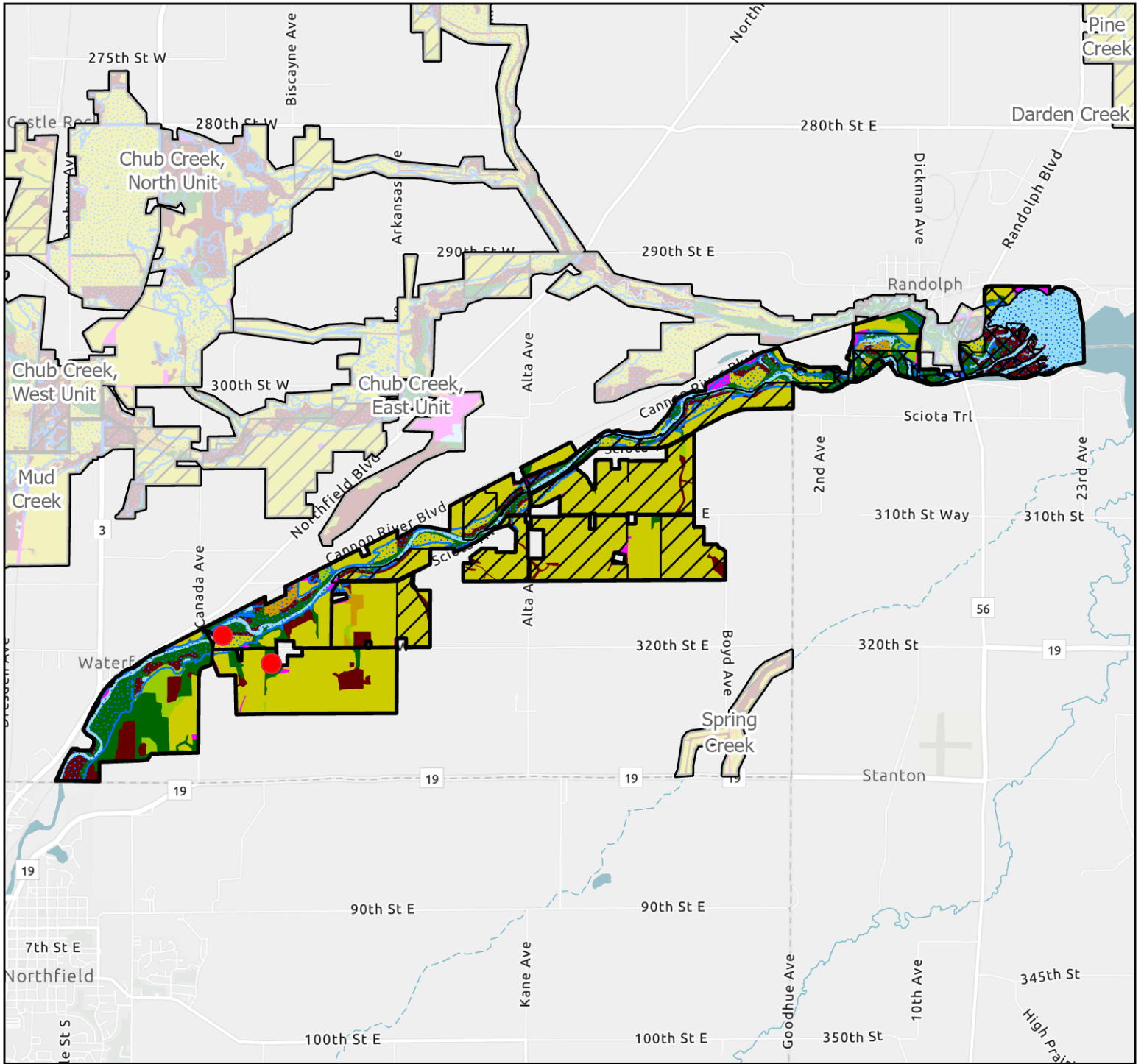


Cannon River







 Public Land

 Protected Private Land

 Flood Hazard Area

Land Cover

-  Artificial (146 Acres)
-  Cultivated (1,791 Acres)
-  Forest (509 Acres)
-  Easement and Land Donation Locations

-  Woodland (87 Acres)
-  Shrubland (46 Acres)
-  Herbaceous (312 Acres)
-  Sparse Vegetation (0 Acres)
-  Water (380 Acres)