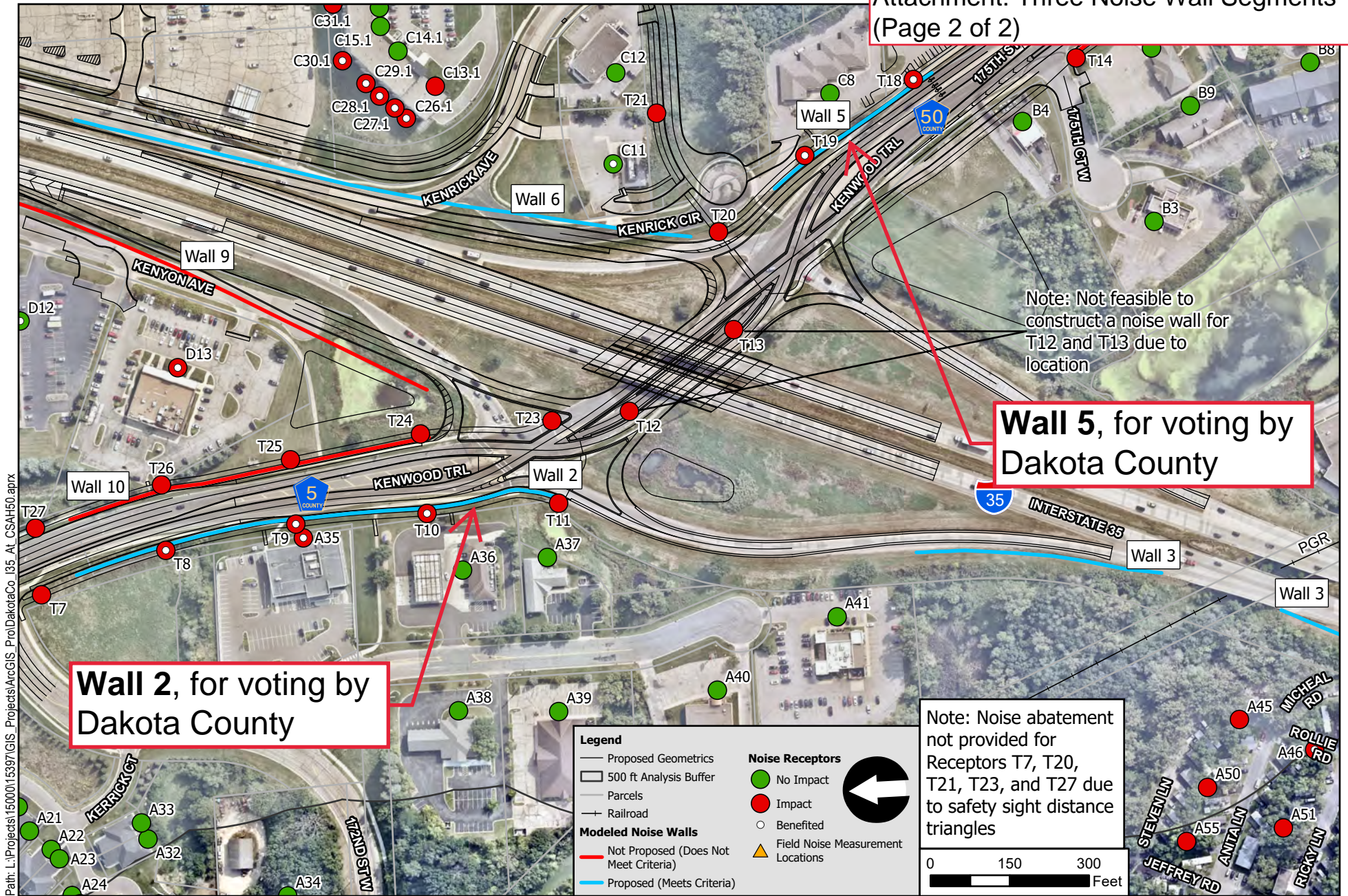


Noise Receptors and Proposed Wall Locations

County Road 50/5 Interchange at I-35 (SP 1980-100 and 019-650-021)
Dakota County

Figure 1



Noise Receptors and Proposed Wall Locations

County Road 50/5 Interchange at I-35 (SP 1980-100 and 019-650-021)
Dakota County

Figure 2