



# Interpretive Loop Pilot Project Update

**Matt Carter**

Dakota County Historical Society

**Maggie Schmidt**

106 Group

# Summary of work completed



- Hired 106 Group to assist with the Interpretive Loop Pilot Project
- Communities in project area include West St. Paul, South St. Paul and Inver Grove Heights
- Planning Department identified 23 locations as potential historical stops in the 23-mile trail loop
- 106 Group researched each proposed site and provided a summary and recommendation for each

# Work to be completed



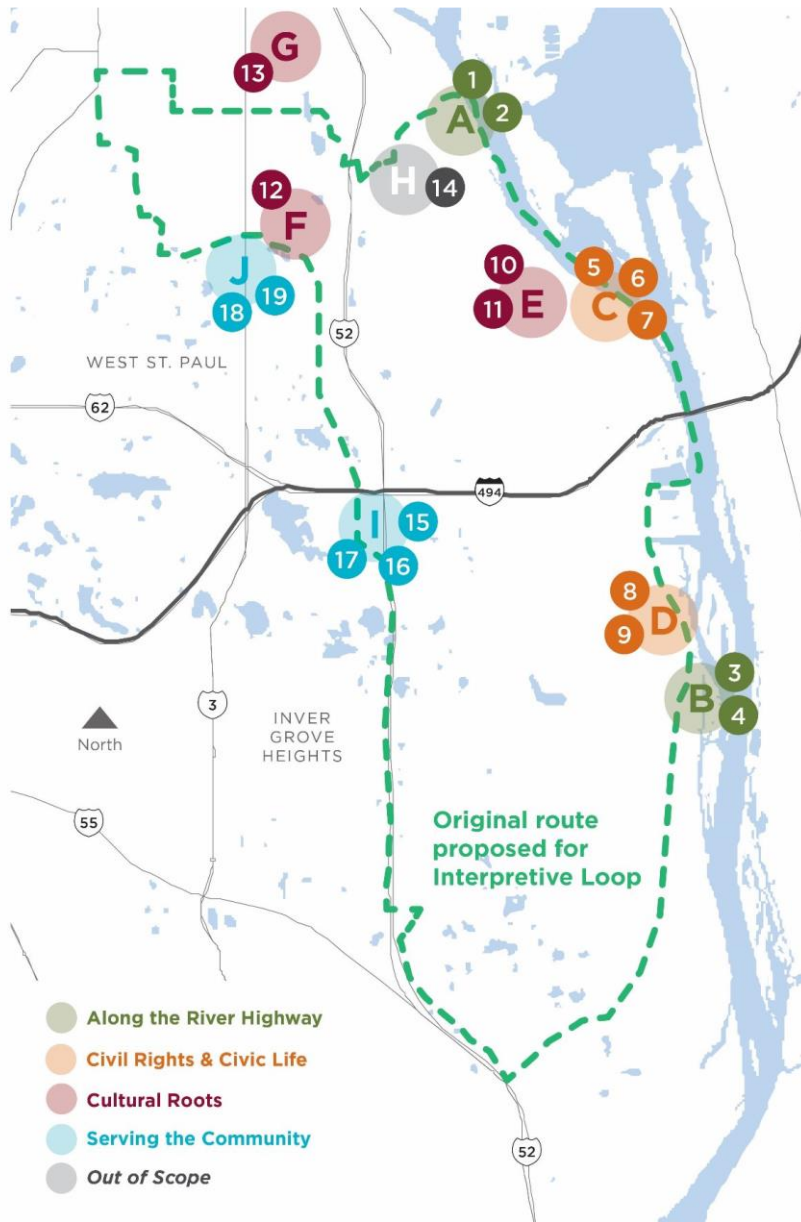
- Group 106 will coordinate two community engagement sessions related to the selected sites
- Final plan will include:
  - Research summary of the sites selected
  - Summary of community engagement sessions
  - Design sample
  - Draft production budget

# Interpretive Approach



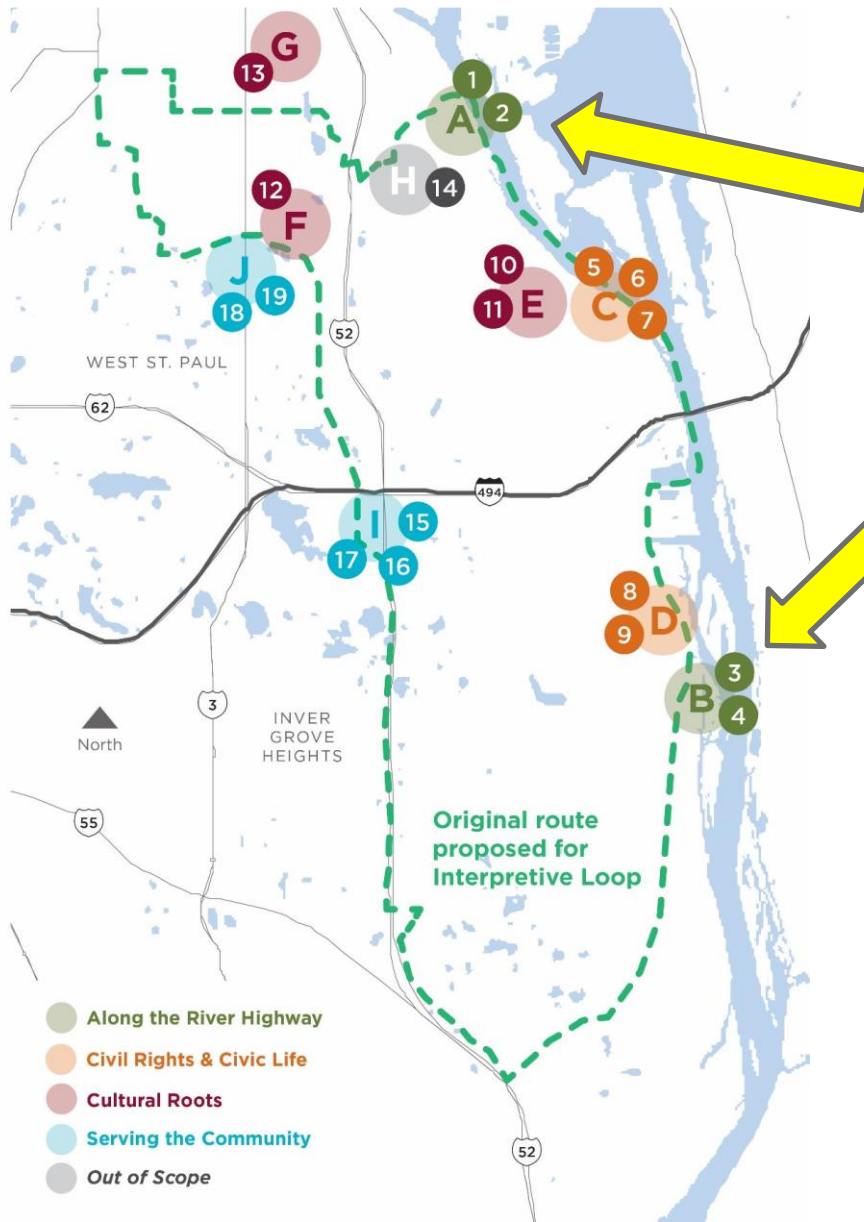
- What stories to include?
  - 23 interpretive topics
  - 24" x 36" interpretive panels
    - 100 words
    - 1-2 images
- Place-Based Interpretation
  - Features stories that are directly connected to the immediate landscape
- Clustered Interpretation
  - Features small groupings of easily accessible historical signage that are united by sub-theme
- Relevant Interpretation
  - Brings history to life that is meaningful and relevant to today's visitors

# Interpretive Themes



- Along the River Highway
- Civil Rights & Civic Life
- Cultural Roots
- Serving the Community
- Out of Scope

# Theme 1: Along the River Highway

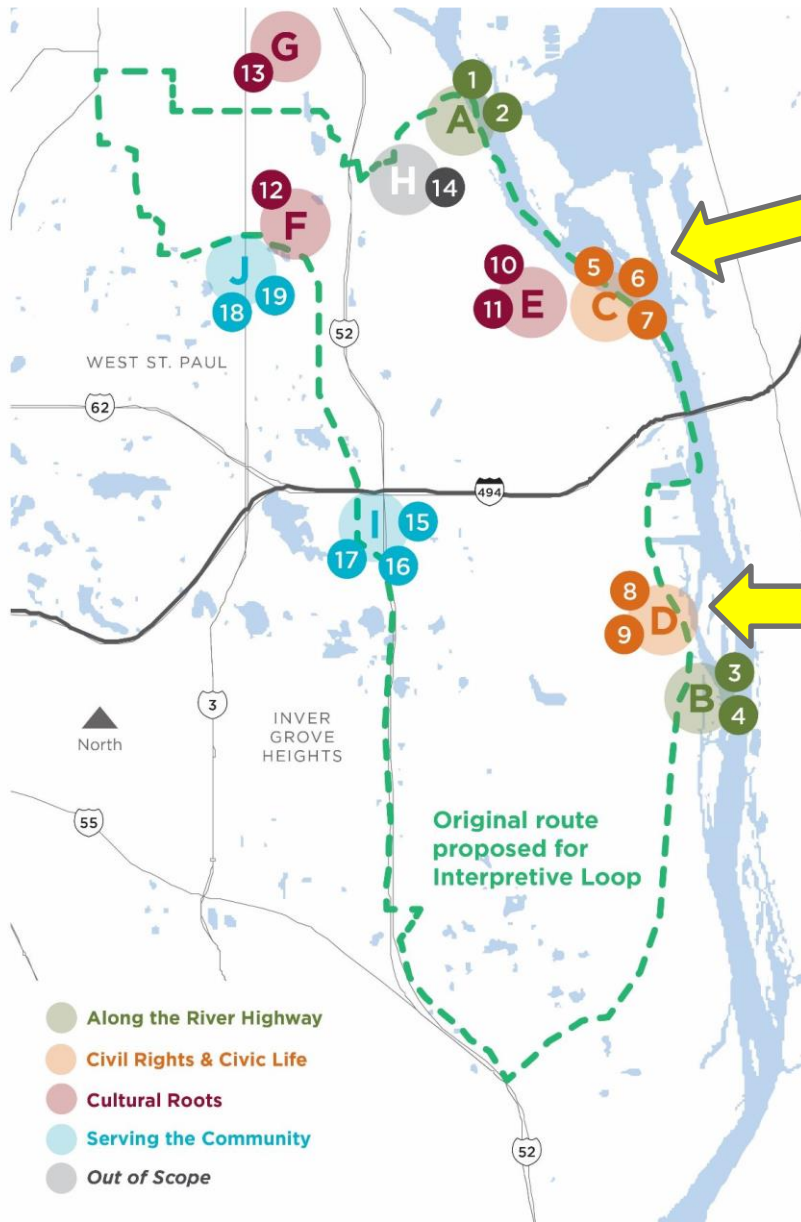


- Cluster A
  - Wreck of the 10 Spot
  - Stockyard Navigation

- Cluster B
  - Rock Island Swing Bridge
  - Dillinger Chase



# Theme 2: Civil Rights & Civic Life



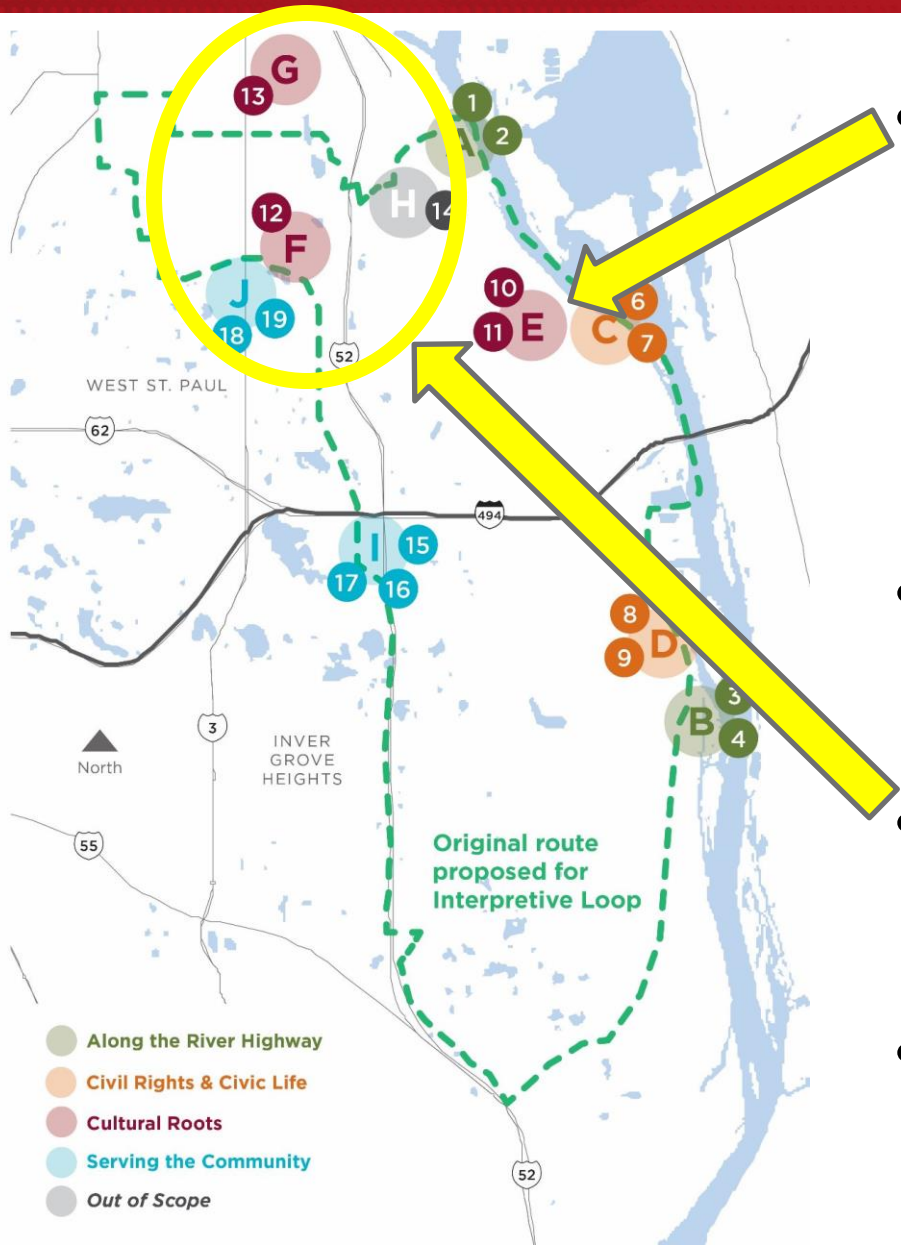
## Cluster C

- Officer Leo Pavlak
- Black Suffrage Bill
- First Women to Vote

## Cluster D

- Mayor Saves Council
- 1<sup>st</sup> Public School

# Theme 3: Cultural Roots



## Cluster E

- Son of Immigrants – NFL Draft
- 19<sup>th</sup> Century European Immigration

## Cluster F

- Among Farmers

## Cluster G

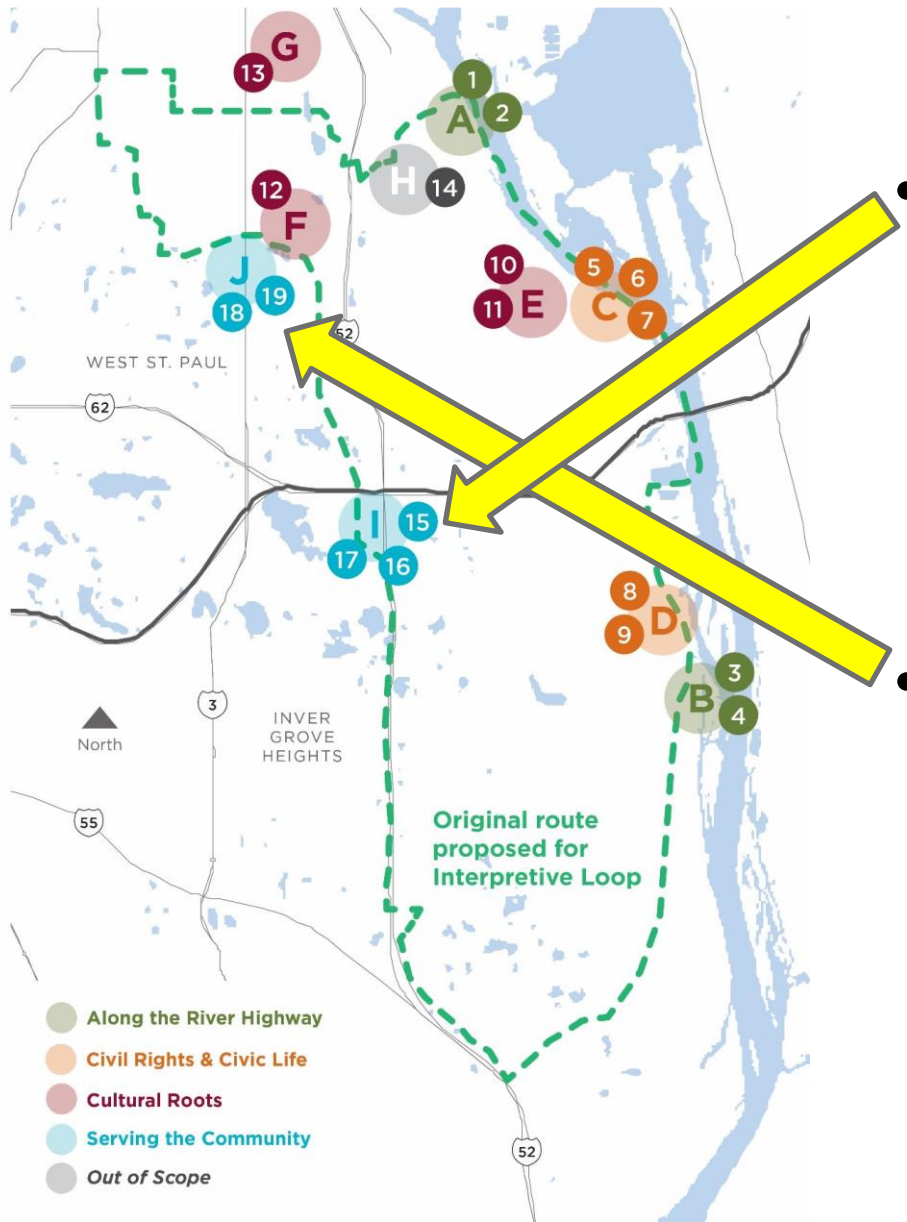
- Mexican Cuisine

## Cluster H (*Not in Scope*)

- *Dakota Village Sites*



# Theme 4: Serving the Community

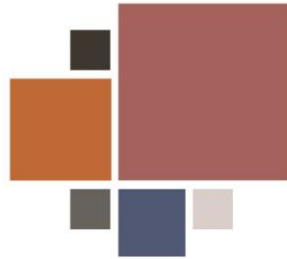


## Cluster I

- Stockyards Memorial Day Fire
- Waterous Company
- Female Firefighters

## Cluster J

- Deputy Jerry Cotton
- Deputy Scott Patrick



## PENNYPACKER WIDE

ABCDEFGHIJKLMNOPQRSTUVWXYZ  
abcdefghijklmnopqrstuvwxyz  
1234567890  
!@#\$%&()

Light  
Book  
Regular  
Medium  
**Bold**  
**Extra Bold**  
**Black**

## Richmond Text

ABCDEFGHIJKLMNOPQRSTUVWXYZ  
abcdefghijklmnopqrstuvwxyz  
1234567890  
!@#\$%&()

Regular  
Medium  
Semibold  
**Bold**  
**Black**



**Dakota**  
COUNTY

Before drafting interpretive text, a graphic typical demonstrates how design style may be translated into graphic design. Typical shows the relationship between color, typography, and graphics in order to communicate exhibit messages. They do not show finished designs; rather, they use placeholder text and/or imagery to demonstrate layout and future content.

[illegible]



Questions?

**Matt Carter**  
Historical Society

**Maggie Schmidt**  
106 Group

