

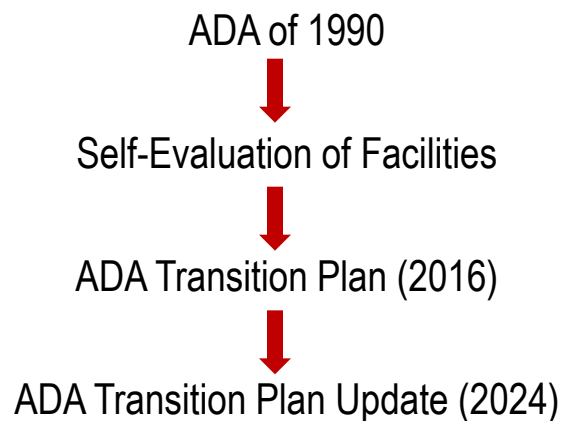


Update on 2024 Dakota County ADA Transition Plan for County Highway Rights of Way

Dakota County Board of Commissioners
Meeting Presentation January 21, 2025

Scott Peters, Senior Transportation Planner

Background



Why Have An ADA Transition Plan?



- Required by statute
- Required for County transportation projects to be eligible for State or Federal funding
- Useful guidance to address ADA requirements for County transportation projects
 - County's pavement management and other projects
- Incorporate ADA guidance into all Transportation CIP and maintenance projects

Methodology



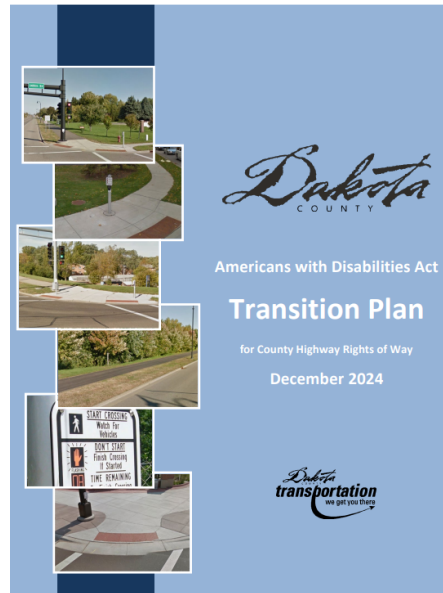
- Inventory and evaluation of existing conditions
 - Visually document locations
 - Evaluate conditions per ADA Transition Plan guidance
- Identify Plan Practices and Strategies
 - Compliance efforts
 - Implementation
 - Agency Coordination
 - Targets

County Website



- County Home Page (www.co.Dakota.mn.us)
 - Transportation tab
 - Transportation Planning & Programs tab
 - ADA Transition Plan link

<https://www.co.dakota.mn.us/Transportation/TransportationStudies/Past/Pages/ada-transition-plan.aspx>



Findings – Overview



Center Line Miles 202 miles (excludes rural areas)

Right of Way Miles 404 miles surveyed on both sides of the highway

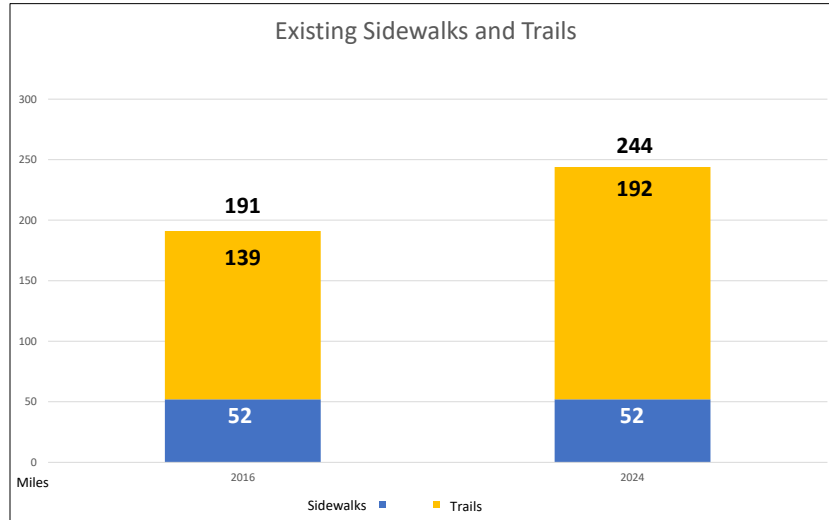
Traffic Signals 142 traffic signals

Existing Sidewalks 52 miles

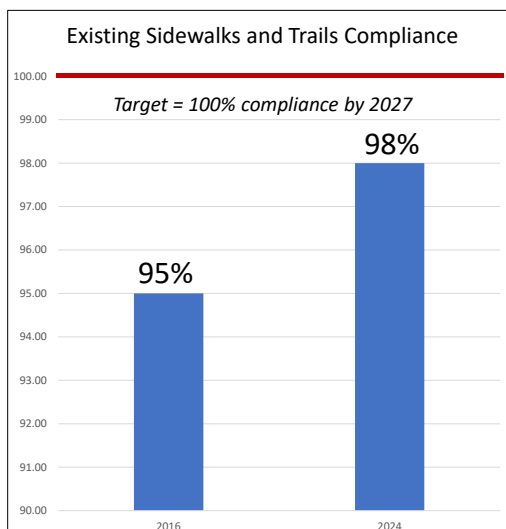
Existing Trails 192 miles

Pedestrian Ramps 3,701

Findings – Sidewalks and Trails

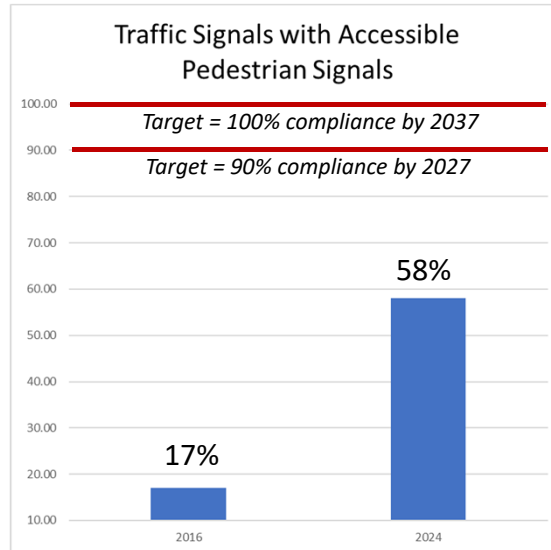


Findings – Sidewalks & Trail Compliance

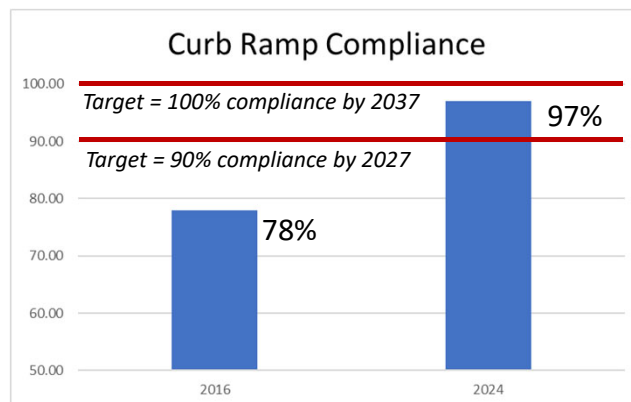


- Percentage of existing sidewalks and trails within County highway right of way that appeared to be substantially compliant with ADA and are in good or fair condition.

Findings – Traffic Signals



Findings – Curb Ramp Compliance



Comparison Example - Burnsville



CSAH 5 @ Burnsville Parkway - Burnsville

2016



2024

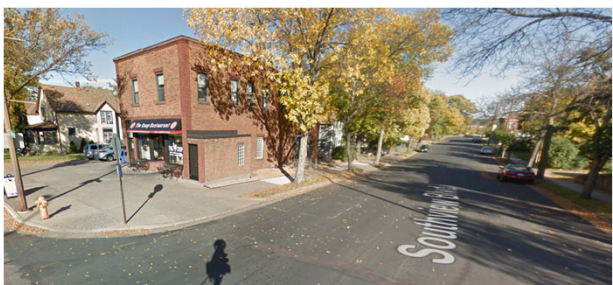


Comparison Example – S. St. Paul



CSAH 14 (Southview Blvd)
@ 3rd St - South St. Paul

2016



2024



Comparison Example – Inver Grove

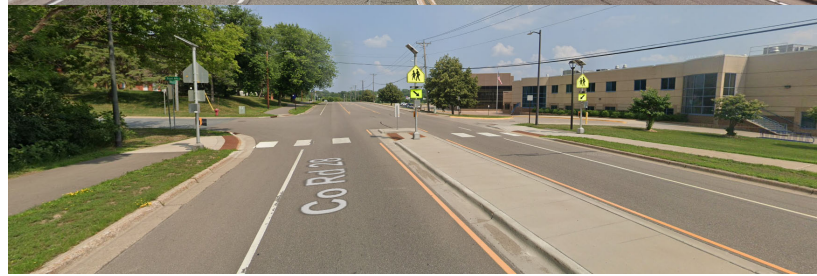


CSAH 28 @ Simley H.S. – Inver Grove Heights

2016



2024



Comparison Example – Apple Valley

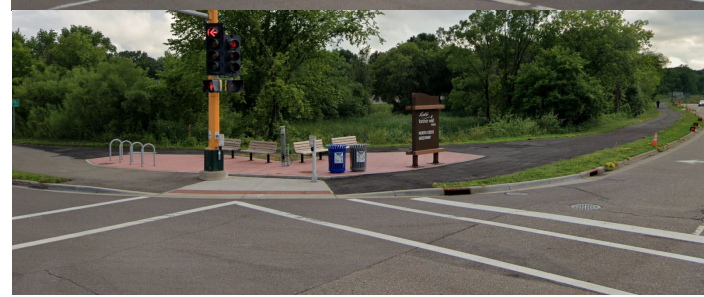


CSAH 38 @ Johnny Cake Ridge Road – Apple Valley (North Creek Greenway trailhead)

2016



2024



Comparison Example - Eagan



CSAH 43 (Lexington Ave) @ Northwoods Parkway - Eagan

2016



2024



Comparison Example - Lakeville



CSAH 50 @ Highview Ave - Lakeville

2016



2024



Work Still to be Done



CR 4 (Butler Ave), E of Sperl – West St. Paul



CSAH 28 (Yankee Doodle Rd) – near Eagan/Inver Grove Heights border



Next Steps / Questions



- Presented at the January 8, 2025 Disability Advisory Council Meeting
- How we intend to use this information
 - Upgrade pedestrian facilities in conjunction with scheduled Transportation CIP projects.
 - Consider stand alone facility and ADA accessibility improvement projects.
 - Monitor the progress
- Questions?