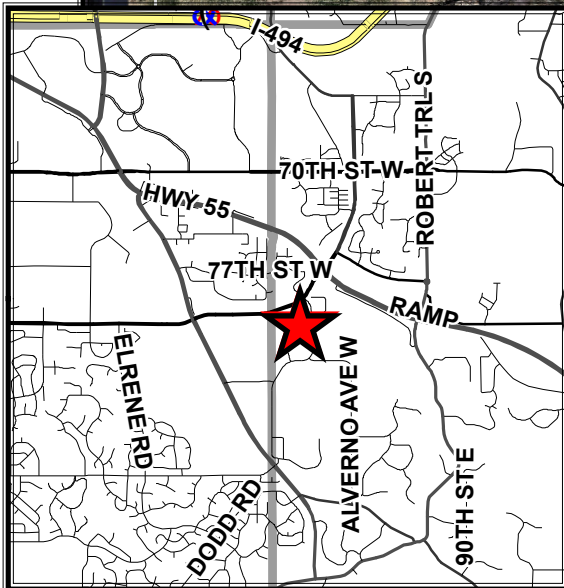


# DAWSON WOODS

Prepared by Dakota County Physical Development Division



**LEGEND:**

- EXISTING IMPROVEMENTS
- PROPOSED IMPROVEMENTS
- PROPOSED LOT LINES
- PROPOSED DRIVEWAYS
- PROPOSED DRIVEWAYS
- PROPOSED DRIVEWAYS

**PROJECT INFORMATION:**

NO.	DATE	DESCRIPTION
1	11/11/2011	PRELIMINARY
2	11/11/2011	PRELIMINARY
3	11/11/2011	PRELIMINARY
4	11/11/2011	PRELIMINARY
5	11/11/2011	PRELIMINARY
6	11/11/2011	PRELIMINARY
7	11/11/2011	PRELIMINARY
8	11/11/2011	PRELIMINARY
9	11/11/2011	PRELIMINARY
10	11/11/2011	PRELIMINARY
11	11/11/2011	PRELIMINARY
12	11/11/2011	PRELIMINARY
13	11/11/2011	PRELIMINARY
14	11/11/2011	PRELIMINARY
15	11/11/2011	PRELIMINARY
16	11/11/2011	PRELIMINARY
17	11/11/2011	PRELIMINARY
18	11/11/2011	PRELIMINARY
19	11/11/2011	PRELIMINARY
20	11/11/2011	PRELIMINARY
21	11/11/2011	PRELIMINARY
22	11/11/2011	PRELIMINARY
23	11/11/2011	PRELIMINARY
24	11/11/2011	PRELIMINARY
25	11/11/2011	PRELIMINARY
26	11/11/2011	PRELIMINARY
27	11/11/2011	PRELIMINARY
28	11/11/2011	PRELIMINARY
29	11/11/2011	PRELIMINARY
30	11/11/2011	PRELIMINARY
31	11/11/2011	PRELIMINARY
32	11/11/2011	PRELIMINARY
33	11/11/2011	PRELIMINARY
34	11/11/2011	PRELIMINARY
35	11/11/2011	PRELIMINARY
36	11/11/2011	PRELIMINARY
37	11/11/2011	PRELIMINARY
38	11/11/2011	PRELIMINARY
39	11/11/2011	PRELIMINARY
40	11/11/2011	PRELIMINARY
41	11/11/2011	PRELIMINARY
42	11/11/2011	PRELIMINARY
43	11/11/2011	PRELIMINARY
44	11/11/2011	PRELIMINARY
45	11/11/2011	PRELIMINARY
46	11/11/2011	PRELIMINARY
47	11/11/2011	PRELIMINARY
48	11/11/2011	PRELIMINARY
49	11/11/2011	PRELIMINARY
50	11/11/2011	PRELIMINARY
51	11/11/2011	PRELIMINARY
52	11/11/2011	PRELIMINARY
53	11/11/2011	PRELIMINARY
54	11/11/2011	PRELIMINARY
55	11/11/2011	PRELIMINARY
56	11/11/2011	PRELIMINARY
57	11/11/2011	PRELIMINARY
58	11/11/2011	PRELIMINARY
59	11/11/2011	PRELIMINARY
60	11/11/2011	PRELIMINARY
61	11/11/2011	PRELIMINARY
62	11/11/2011	PRELIMINARY
63	11/11/2011	PRELIMINARY
64	11/11/2011	PRELIMINARY
65	11/11/2011	PRELIMINARY
66	11/11/2011	PRELIMINARY
67	11/11/2011	PRELIMINARY
68	11/11/2011	PRELIMINARY
69	11/11/2011	PRELIMINARY
70	11/11/2011	PRELIMINARY
71	11/11/2011	PRELIMINARY
72	11/11/2011	PRELIMINARY
73	11/11/2011	PRELIMINARY
74	11/11/2011	PRELIMINARY
75	11/11/2011	PRELIMINARY
76	11/11/2011	PRELIMINARY
77	11/11/2011	PRELIMINARY
78	11/11/2011	PRELIMINARY
79	11/11/2011	PRELIMINARY
80	11/11/2011	PRELIMINARY
81	11/11/2011	PRELIMINARY
82	11/11/2011	PRELIMINARY
83	11/11/2011	PRELIMINARY
84	11/11/2011	PRELIMINARY
85	11/11/2011	PRELIMINARY
86	11/11/2011	PRELIMINARY
87	11/11/2011	PRELIMINARY
88	11/11/2011	PRELIMINARY
89	11/11/2011	PRELIMINARY
90	11/11/2011	PRELIMINARY
91	11/11/2011	PRELIMINARY
92	11/11/2011	PRELIMINARY
93	11/11/2011	PRELIMINARY
94	11/11/2011	PRELIMINARY
95	11/11/2011	PRELIMINARY
96	11/11/2011	PRELIMINARY
97	11/11/2011	PRELIMINARY
98	11/11/2011	PRELIMINARY
99	11/11/2011	PRELIMINARY
100	11/11/2011	PRELIMINARY

**PROJECT INFORMATION:**

PROJECT NAME: Dawson Woods

PROJECT NUMBER: 11/11/2011

PROJECT LOCATION: Dawson Woods

PROJECT STATUS: Preliminary Plat Submittal

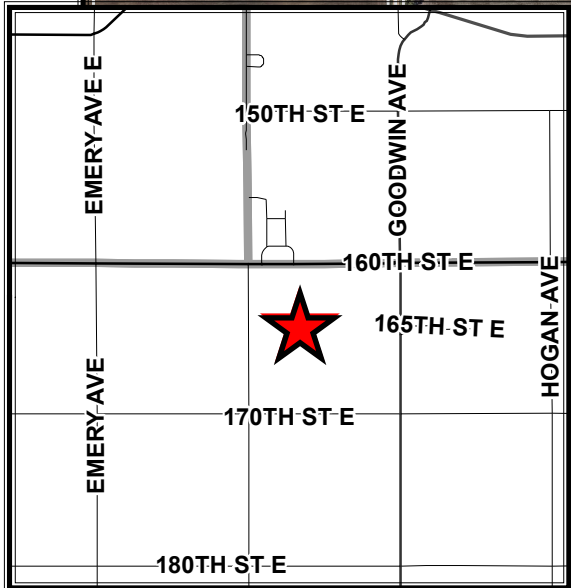
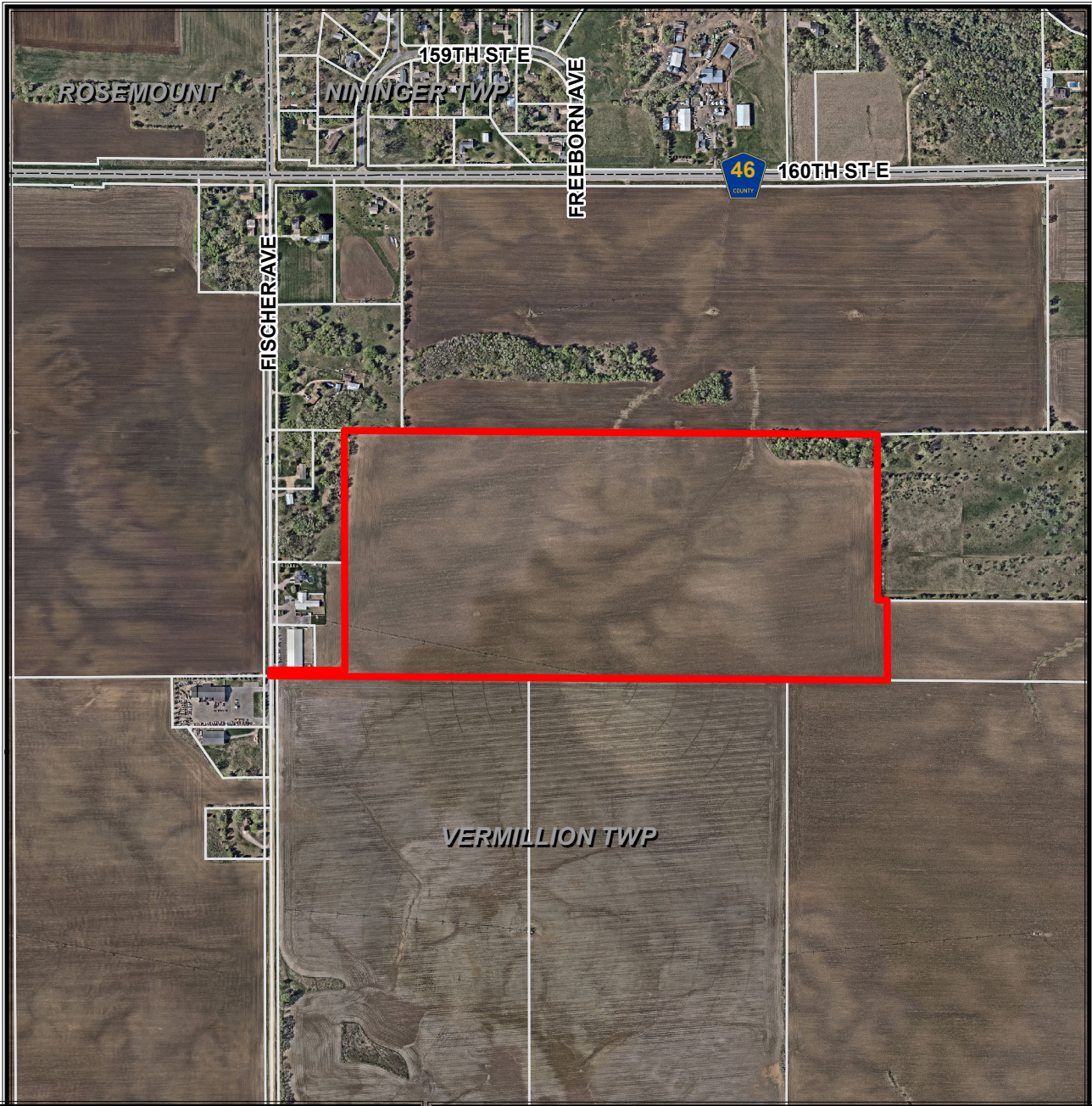
PROJECT DATE: 11/11/2011

PROJECT SCALE: 1" = 100'

PROJECT SHEET: 6

# REGISTERED LAND SURVEY NO 67

Prepared by Dakota County Physical Development Division



**REGISTERED LAND SURVEY NO. 67**

**PRELIMINARY**  
2-26-2020

SECTION 3  
TOWNSHIP 55 N  
RANGE 18 W  
TRACT A

LEGEND

ROSEMOUNT & VERMILLION  
LAND SURVEYS, INC.