



AVIVO®

Getting to Know Avivo



Career Education & Employment Services

- Licensed post-secondary school offering short-term training programs
- Career services for youth, adults, immigrants, and people with disabilities



Chemical & Mental Health Services

- Intensive outpatient treatment
- Mental health clinic & targeted case management
- Community support programming



Ending Homelessness

- Avivo Village: Low barrier shelter using tiny home model
- Street outreach team
- Supportive housing services

Impact and Outcomes in Dakota County

Participants Served:

- 1,413 individuals served (733 new enrollments)

Placements:

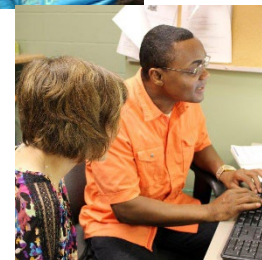
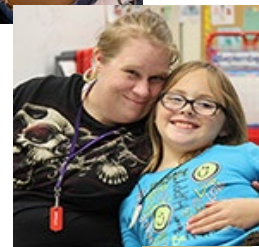
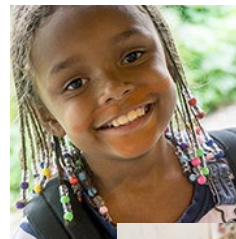
- 229 individuals placed in employment (40%)
- Average starting wage: \$20.81/hour

Retention:

- 90% (220 individuals) retained employment 180 days/6 months post-exit
- 80% remained off public assistance for 12+ months

Self- Support Index:

- January rate: 60.42%,
- Contracted range: 56.21%–64.05%
- Avivo has consistently remained within range since our first award in 2007



Enhancing Participant Success: Social Worker Impact

- New initiative to focus on individuals facing extreme barriers impeding their success was launched and funded in 2025
- 94 families referred to Intensive Stabilization Services
- Top needs: Housing stabilization (45%) and family violence support
- 163 referrals provided to address legal issues, children's mental health, food insecurity, utilities, and education



Collaborations



Improved Access to Services

- Expedited intake through coordination with Dakota County staff
- Promotion of and participation in CareerForce Center classes, workshops, and job fairs
- Dual enrollment with WIOA programs to support continued training after MFIP exit

Community Support Initiatives

- Avivo Adopt-A-Family event provided holiday gifts to 600 Dakota County individuals in 2025

Community Collaboration

Family & Community Engagement: Quarterly Family Networking Events connect participants with community resources and activities.

Key Community Partners

- Dakota County Parks & Recreation
- Dakota County Financial Wellness
- Dakota County Technical College
- Dakota County Library
- Dakota County WIC
- Dodge Nature Center
- Neighbors Inc.
- Fare For All
- 360 Communities
- Local businesses (Domino's & Subway)



Questions?

