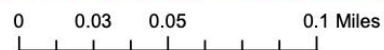
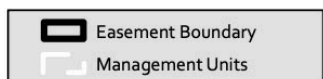
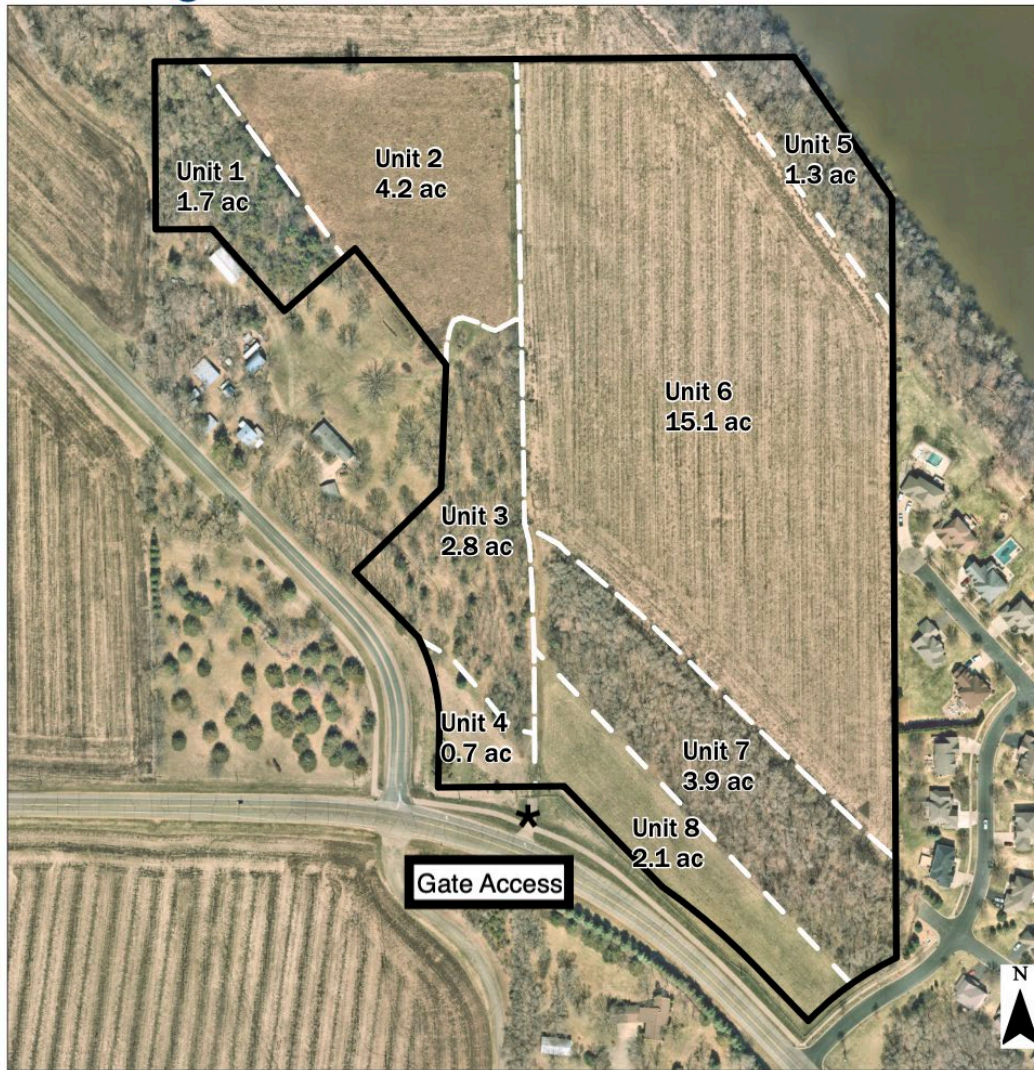


Conservation Easement Management Units



Other Credits

Date Exported: 6/23/2025
10:36 AM

Dakota County, Maxar, Microsoft

Site Access: The Benjamin Conservation Easement can be accessed from a gate to the east of the driveway and homestead area (44.756493, -92.886342). Contact FMR at least 24 hours in advance of any site visit.