



# Dakota County

## Physical Development Committee of the Whole Agenda

---

Tuesday, June 16, 2026

9:00 AM

Conference Room 3A, Administration  
Center, Hastings

---

If you wish to speak to an agenda item or an item not on the agenda, please notify the Clerk to the Board via email at [CountyAdmin@co.dakota.mn.us](mailto:CountyAdmin@co.dakota.mn.us)  
Commissioners may participate in the meeting by interactive technology.

### 1. Call to Order and Roll Call

Note: Any action taken by this Committee of the Whole constitutes a recommendation to the County Board.

### 2. Audience

Anyone in the audience wishing to address the Committee on an item not on the Agenda or an item on the Consent Agenda may send comments to [CountyAdmin@co.dakota.mn.us](mailto:CountyAdmin@co.dakota.mn.us) and instructions will be given to participate during the meeting. Verbal comments are limited to five minutes.

### 3. Approval of Agenda (Additions/Corrections/Deletions)

#### 3.1 Approval of Agenda (Additions/Corrections/Deletions)

### 4. Consent Agenda

#### 4.1 Approval Of Minutes Of Meeting Held On May 12, 2026

### 5. Regular Agenda

#### 5.1 *Transportation* - Update And Direction On Potential Trail Inclusion For County State Aid Highway 54 Expansion In Ravenna Township, County Project 54-011

#### 5.2 *Transportation* - Update On Safety And Operations At County State Aid Highway 50 And 60 Intersection In City Of Lakeville

#### 5.3 *Parks* - Update And Direction On Recommended Park Ordinance 107 Amendments

### 6. Assistant County Managers' Report

### 7. Future Agenda Items

**8. Adjournment**

**8.1 Adjournment**

**For more information please call 952-891-7000.**

**Physical Development agendas are available online at  
<https://www.co.dakota.mn.us/Government/BoardMeetings/Pages/default.aspx>  
Public Comment can be sent to [CountyAdmin@co.dakota.mn.us](mailto:CountyAdmin@co.dakota.mn.us)**



# Physical Development Committee of the Whole

## Request for Board Action

---

**Item Number:** DC-5688

**Agenda #:** 3.1

**Meeting Date:** 6/16/2026

---

Approval of Agenda (Additions/Corrections/Deletions)



# Physical Development Committee of the Whole

## Request for Board Action

---

**Item Number:** DC-5694

**Agenda #:** 4.1

**Meeting Date:** 6/16/2026

---

Approval Of Minutes Of Meeting Held On May 12, 2026



# Dakota County

## Physical Development Committee of the Whole

### Minutes

---

Tuesday, May 12, 2026

9:30 AM

Conference Room 3A, Administration  
Center, Hastings

---

(or following General Government and Policy)

#### 1. Call to Order and Roll Call

**Present**

- Commissioner Mike Slavik
- Commissioner Joe Atkins
- Commissioner Laurie Halverson
- Commissioner William Droste
- Commissioner Liz Workman
- Chairperson Mary Liz Holberg
- Commissioner Mary Hamann-Roland

Also in attendance were Heidi Welsch, County Manager; Tom Donely, First Assistant County Attorney; Georg Fischer, Assistant County Manager: Physical Development; Liz Hansen, Administrative Coordinator.

The audio recording of this meeting is available upon request.

#### 2. Audience

Commissioner Holberg asked if there was anyone in the audience that wished to address the Physical Development Committee of the Whole on an item not on the agenda or an item on the consent agenda. No one came forward and no comments were submitted to [CountyAdmin@co.dakota.mn.us](mailto:CountyAdmin@co.dakota.mn.us).

#### 3. Approval of Agenda (Additions/Corrections/Deletions)

Motion: Mary Hamann-Roland

Second: Liz Workman

Ayes: 7

#### 4. Consent Agenda

##### 4.1 Approval Of Minutes Of Meeting Held On April 14, 2026

Motion: Mike Slavik

Second: Laurie Halverson

Ayes: 7

#### 5. Regular Agenda

**5.1 Presentation Of Dakota County Soil And Water Conservation District Annual Report**

Ashley Gallagher, the District Manager of the Soil and Water Conservation District (SWCD), presented the 2026 budget, totaling \$2.5 million, with a third allocated as pass-through dollars. The district manages 23 grants and 18 local agreements. In 2025, the district assisted 260 landowners and monitored 25 water bodies. The district manages 264 active conservation contracts and has seen increases in soil health practices and native prairie restorations. The district also conducts educational outreach, including turf conversion and landscaping for clean water programs. The district is currently working on a water retention basin and an irrigation system conversion.

The SWCD will complete an assessment of the County Ditch network in early 2027. County Staff were directed to provide the Board with a report or briefing once that assessment is complete. The report or briefing should address the status of the County Ditch system, how the County currently manages the system, and how that management may differ from other areas of Minnesota.

Information only; no action requested.

**6. Assistant County Managers' Report**

Georg Fischer, Assistant County Manager, provided an update on the five-year renewal of the compost site agreement for the property located in Empire Township adjacent to the Dakota Woods Dog Park, and on the recognition of World Facilities Management Professional Day on May 13, which celebrates facilities management professionals worldwide. Mr. Fischer also referenced an article addressing questions the County Board had posed during the data center discussion about water quality indicators at the County Board meeting on April 7, 2026.

**7. Future Agenda Items**

Chair, Commissioner Mary Liz Holberg, asked the Committee if anyone had a topic they would like to hear more about at an upcoming Physical Development Committee of the Whole. No Commissioners requested topics for future meetings at this time.

**8. Adjournment**

Motion: Mike Slavik

Second: Mary Hamann-Roland

On a motion by Commissioner Mike Slavik, seconded by Commissioner Mary Hamann-Roland, the meeting was adjourned at 10:02 a.m.

Ayes: 7

Respectfully submitted,  
Liz Hansen  
Administrative Coordinator



# Physical Development Committee of the Whole

## Request for Board Action

---

Item Number: DC-5604

Agenda #: 5.1

Meeting Date: 6/16/2026

---

**DEPARTMENT:** Transportation

**FILE TYPE:** Regular Information

### TITLE

**Update And Direction On Potential Trail Inclusion For County State Aid Highway 54 Expansion In Ravenna Township, County Project 54-011**

### PURPOSE/ACTION REQUESTED

Provide an update to County leadership on the preliminary design layout and key findings from the April 8, 2026, public open house for the County State Aid Highway (CSAH) 54 reconstruction project and seek further direction on the potential inclusion of a multi-use trail.

### SUMMARY

Dakota County, in partnership with the City of Hastings, Prairie Island Indian Community, and Ravenna Township, is advancing County Project (CP) 54-011 to reconstruct CSAH 54 (Ravenna Trail) between CSAH 54 (18th Street East) and CSAH 68 (200th Street East). The project includes safety-driven geometrics, widened shoulders, turn lanes, culvert replacements, flood-resiliency improvements, and a planned roundabout at the CSAH 54/68 intersection (Attachment: Location Map). Construction is anticipated in 2030, subject to funding.

CSAH 54 is currently a narrow, high-speed rural highway with documented safety issues, including sharp curves, limited shoulder width, inadequate sight distances, and a high number of run-off-the-road crashes. The open house materials and analysis highlight over 200 documented crashes in the corridor over the past ten years, including run-off-the-road, head-on, and vehicle-bike/pedestrian incidents.

A multi-use trail adjacent to CSAH 54 is also being evaluated. This facility would serve as a critical extension of the Mississippi River Greenway, enabling future regional trail connections south to Prairie Island and eventually to downtown Red Wing, consistent with the 2009 Hastings-to-Red Wing Trail Master Plan and its 2023 update.

County staff previously provided updates on May 13, 2025, and December 2, 2025, outlining four design options:

1. Reconstruction without trail
2. Reconstruction with paved trail
3. Reconstruction with graded (unpaved) trail
4. Future trail construction (constructed independently later)

Following review, the County Board directed staff to include the trail.

## Second Public Open House (April 8, 2026)

Approximately 83 attendees participated in an informal drop-in open house at Ravenna Township Hall. The project team shared the preliminary layout, safety needs, visualizations, and trail concepts. Public comments were accepted in person, via comment cards, and online.

On April 21, 2026, the County Board also received a petition from Ravenna Township residents expressing concerns regarding the potential trail component, including property impacts, privacy, trespassing, rural character, and fiscal responsibility. These concerns are generally consistent with themes heard during the April 8, 2026, open house and prior engagement. Staff will continue to evaluate these topics through the established environmental review and design process, including ongoing coordination with affected property owners and Township leadership.

## Environmental Review Status (EAW):

An Environmental Assessment Worksheet (EAW) has been completed for County Project 54-011 in accordance with Minnesota Rules 4410. The EAW is ready for publication following confirmation of the preferred design direction, including the potential trail component. Staff will review the EAW with the Physical Development Committee (PDC) on June 16, 2026, and, consistent with past practice, will provide the County Board with awareness of the upcoming release on June 23, 2026, as an informational consent item. Under Environmental Quality Board (EQB) rules, formal County Board approval is not required to submit the EAW for publication; however, staff customarily align EAW publication with Board notification to ensure transparency and coordinated project communication.

## EAW Schedule:

The proposed schedule aligns environmental review milestones with the County Board and PDC calendar:

1. PDC Presentation - June 16, 2026 (PDC)
2. County Board Approval to Distribute (Consent) - June 23, 2026 (CB/GGP)
3. Submit EAW to EQB Monitor - By June 30, 2026
4. EQB Monitor Publication - July 7, 2026
5. 30-Day Public Comment Period - July 8-August 7, 2026
6. Prepare Findings/Responses - August 7-18, 2026
7. County Review Period - August 18-September 1, 2026
8. EIS Need Decision (Negative Declaration) - September 1, 2026 (CB/GGP)
9. Distribute Decision Notice - September 8-15, 2026
10. EQB Monitor Publication of Final Decision - September 22, 2026

## EAW Validity:

While an EAW does not expire under Minnesota Rules, the County must issue an EIS Need Decision within 30 days following the close of the comment period unless a mutually agreed extension is executed with the proposer. Failure to adopt an EIS Need Decision within this period would render the environmental review procedurally incomplete. Staff note that changes such as removing the trail would not require a new EAW, as removal reduces project impacts.

## Key themes from public input include:

- Safety concerns regarding speeds, curves, lack of shoulders, and limited enforcement.
- Mixed views on the trail:

- Some support from cyclists and residents who noted high existing bicycle use and the safety value of separation from traffic.
- Many adjacent homeowners do not support a trail on their property side, expressing concerns about property impacts, crime, privacy, and littering.
- Roadway design: Desire for improved sightlines, turn lanes, and thoughtful driveway access; concerns about snowplowing with curbs and about property acquisition.
- Farm and rural character: Long-standing farm operators expressed concern that improvements could lead to increased speeds, traffic, and impacts to agricultural operations and rural quality of life.
- Trail-specific technical feedback emphasized the need for:
  - Minimizing sharp trail-roadway turns
  - Maintaining clear sightlines at crossings
  - Ensuring shoulders or trail width accommodates group cycling (15-25 riders) if a trail is not feasible.

Overall, residents generally support addressing safety issues but remain divided on trail inclusion, particularly homeowners directly adjacent to the corridor.

Staff will provide an overview of the project and public engagement to date and seek confirmation of the Board’s previous direction to include the trail, or, if desired, updated direction to pursue one of the other design alternatives.

**RECOMMENDATION**

Information only; no action requested.

**EXPLANATION OF FISCAL/FTE IMPACTS**

- None             Current budget             Other
- Amendment Requested             New FTE(s) requested

**RESOLUTION**

Information only; no action requested.

**PREVIOUS BOARD ACTION**

None.

**ATTACHMENTS**

- Attachment: Location Map
- Attachment: CSAH 54 Open House #2 Summary
- Attachment: Presentation Slides

**BOARD GOALS**

- Thriving People             A Healthy Environment with Quality Natural Resources
- A Successful Place for Business and Jobs             Excellence in Public Service

**CONTACT**

Department Head: Erin Laberee  
Author: Imran Ahmed



County Project 54-11



## County Road 54 (Ravenna Trail) Reconstruction

---

### Open House #2 Summary

*Wednesday, April 8, 2026, 5:00 p.m. – 7:00 p.m.*

*Ravenna Township Hall, 20425 Red Wing Blvd, Hastings, MN 55033*

**Attendance:** Approximately 83 attendees (see attached sign-in sheet).

**Format:** Informal drop-in to view project information boards, preliminary design layout, corridor visualization and speak with project staff.

**Background:** A public open house meeting was held on April 8<sup>th</sup> at the Ravenna Township Hall. This was the second open house held for the Dakota County Hwy 54 (Ravenna Trail) Preliminary Engineering Reconstruction project. The first open house meeting was held on June 18, 2024 at the same location. Project team members from Dakota County, Kimley-Horn (design consultant) and the City of Hastings hosted the meeting, sharing project background information, goals and priorities for the future reconstruction project. The preliminary project layout was on display, with planned improvements including the addition of shoulders (where not currently present), turn lanes at public road intersections, a roundabout at the Hwy 54/Hwy 68 intersection, raised highway elevation in locations prone to flooding and a 10' trail adjacent the highway to become an extension of the Mississippi Greenway Trail from Hastings to the south. A video animation was displayed at the meeting depicting a fly-through of the corridor with an overlay of the existing and proposed condition reflected in the preliminary design layout.

Notifications for the meeting were provided via mailed postcards to project area residents and property owners, social media and the Dakota County project website found here: <https://www.co.dakota.mn.us/Transportation/PlannedConstruction/CR54>

Public comments were collected via written comment cards and online on the project website through an interactive map. Public comments received were included at the end of this summary.

#### Comment Summary/Themes:

- Safety
  - General consensus through written and verbal communications that Ravenna Trail has safety concerns with speed, sharp curves, lack of consistent shoulders in need of correction.
  - Desire to decrease speed limits on County Road 54.



- Concerns about the lack of law enforcement patrolling vehicle speeds.
- Bike/Pedestrian Trail
  - Some desire for dedicated bike paths to enhance cyclist safety.
  - Noted concerns with the impacts of the bike trail, cost and concerns for bike trail usage/not enough cycling traffic.
  - General note from many homeowners that they do not support the trail adjacent to their property/residence.
  - Concerns the trail will increase crime and littering by users.
- Project Funding
  - Concerns about the project budget.
  - Comments that Dakota County should prioritize other projects.
- Community impacts
  - Concerns about increased littering along Ravenna Trail.
  - Concerns about property acquisition for residents adjacent to the trail.
  - Increase in local traffic along County Road 54.
- Roadway Design
  - Desire for improved intersection sightlines to improve safety.
  - Need for clear visibility at trail-roadway intersections.
  - Concerns that adding curbs will make snowplowing more difficult.
  - Noted historic flooding issues with the highway at specific locations including the south end near Hwy 68 and near 18<sup>th</sup> Street.
  - General support for improving the highway with an understanding of the safety issues of the existing highway. The proposed improvements do incur property impacts, which are not favorable by some (tree clearing, etc.).

Layout post-it comments:

1. General
  - a. "I love the bike trail"
  - b. "Where will mailboxes be located after the construction?"
  - c. "No trail"
2. Reuter Farms
  - a. "Is it possible to add signage for the farm/semi traffic? Both sides and the farm. Lots of farm activity on both sides?"
3. Polk Ave
  - a. "Turns lanes necessary?"

Emailed Comments:

1. General

- a. Feedback was received from cycling groups/locals in support of the trail and/or wide shoulders to provide a safe location to ride.
- b. One comment noted no favor for the project, indicated they moved out to this area to get away from town.
- c. Agricultural property owner noted concerns the highway project will lead to faster and more traffic adjacent to their farm.

Online Interactive Map Comments:

1. General

- a. Property owner concerns with property encroachment.
- b. Noted concern making a left turn into a residential driveway due to proximity to a proposed turn lane.
- c. Noted the proposed roundabout at Hwy 54/Hwy 68 would be a great addition.

Event Photos:



Figure 1: Image of open house display information.



Figure 2: Image of corridor visualization on display depicting current and future conditions.



Figure 3: Image of open house attendees viewing project design layouts with staff



Figure 4: Image of open house attendees viewing the Ravenna Trail visualization

**Open House Display Boards**



*Dakota*

**Ravenna Trail Reconstruction  
and Mississippi River Greenway Extension Project**

# WELCOME

to the **OPEN HOUSE**  
**APRIL 8th, 2026 // 5-7 pm**

Ravenna Trail Reconstruction Project

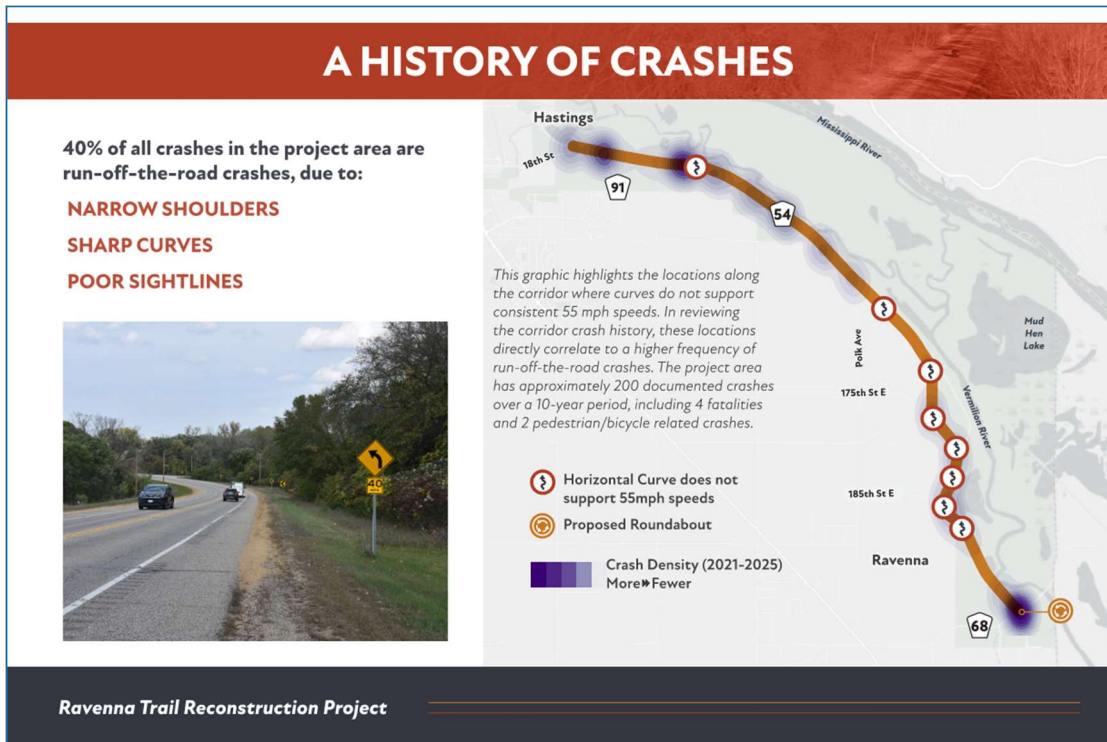
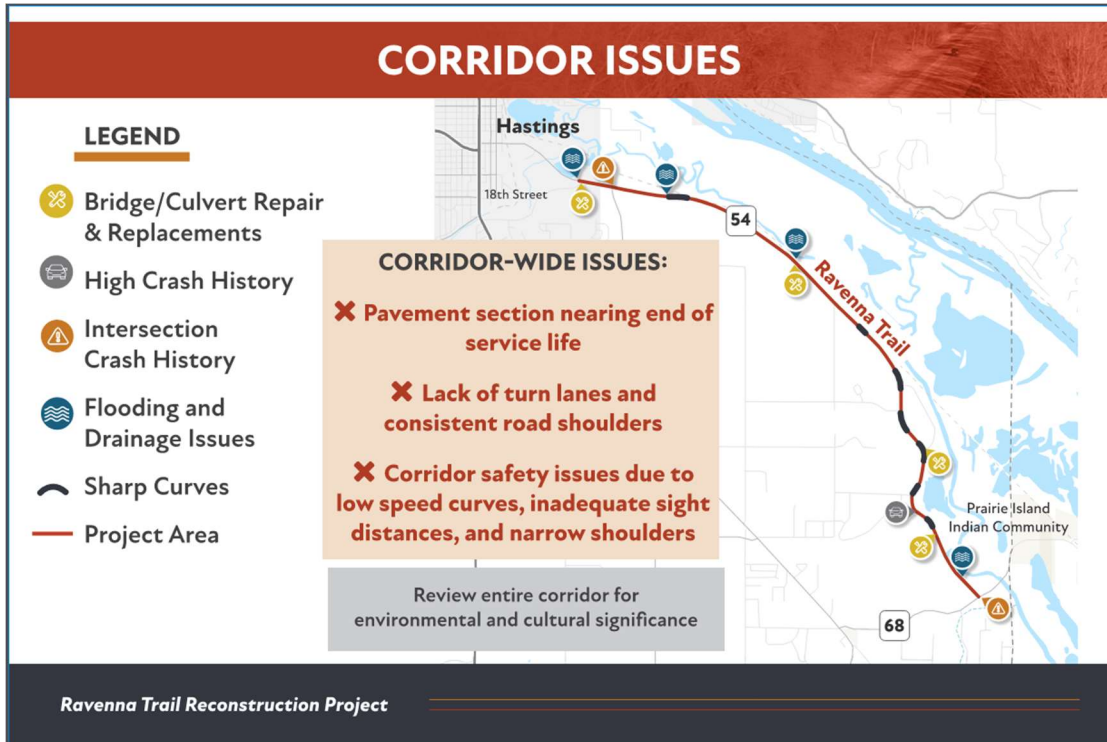


## PROJECT PURPOSE

Ravenna Trail is a high-speed, two-lane highway, last reconstructed in the 1960's, connecting Hastings to Prairie Island. With an expected 70-year lifespan, the highway corridor is nearing the end of its functional life, as regular maintenance becomes less cost effective as highways age. The road has a documented crash history, tight curves, and lacks turn lanes and standard shoulders. The purpose of the project is to replace aging infrastructure, improve traffic safety and mobility, and boost multimodal access for the public. The project includes extension of the Mississippi River Greenway trail along Ravenna Trail to enhance bicycle and pedestrian opportunities and support regional trail connections and future planned extensions.

-  Intersection, sight lines, and roadway curve improvements
-  Stormwater management and flood resilience
-  Environmental and cultural resource protection
-  Mississippi River Greenway trail extension
-  Roundabout construction at the County Road 68 intersection

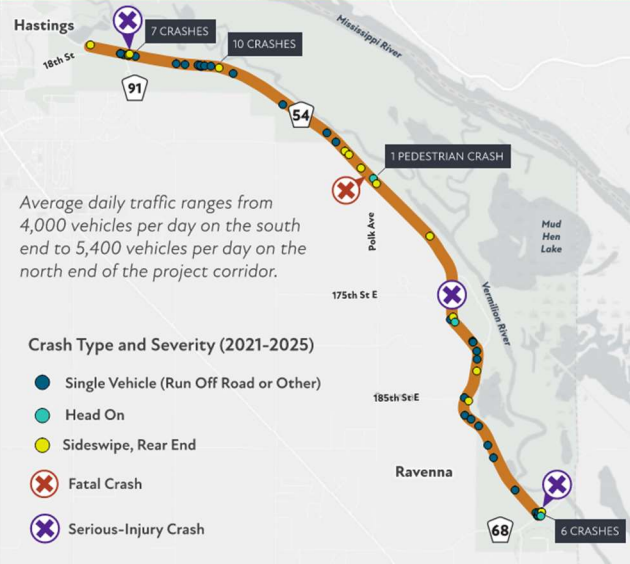
Ravenna Trail Reconstruction Project



## A HISTORY OF CRASHES

Narrow shoulders, sharp curves, and poor sightlines contribute to severe and fatal crashes by reducing driver recovery space, increasing the risk of lane departures, and creating unexpected hazards, often resulting in high-speed head-on or run-off-road collisions.

The graphic displays crash by type and severity along the corridor. Between 2021-2025 there was one fatal crash and three serious injury crashes. The fatal crash was head on as a result of a lane departure.



Ravenna Trail Reconstruction Project

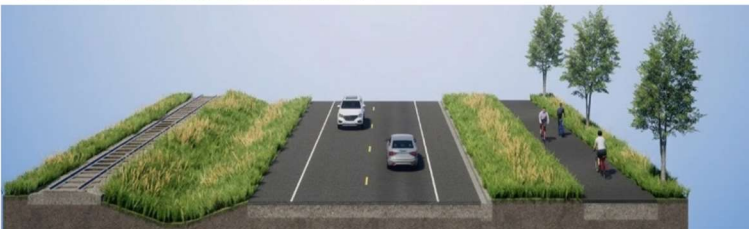
## CURB AND GUTTER

### RURAL TYPICAL SECTION



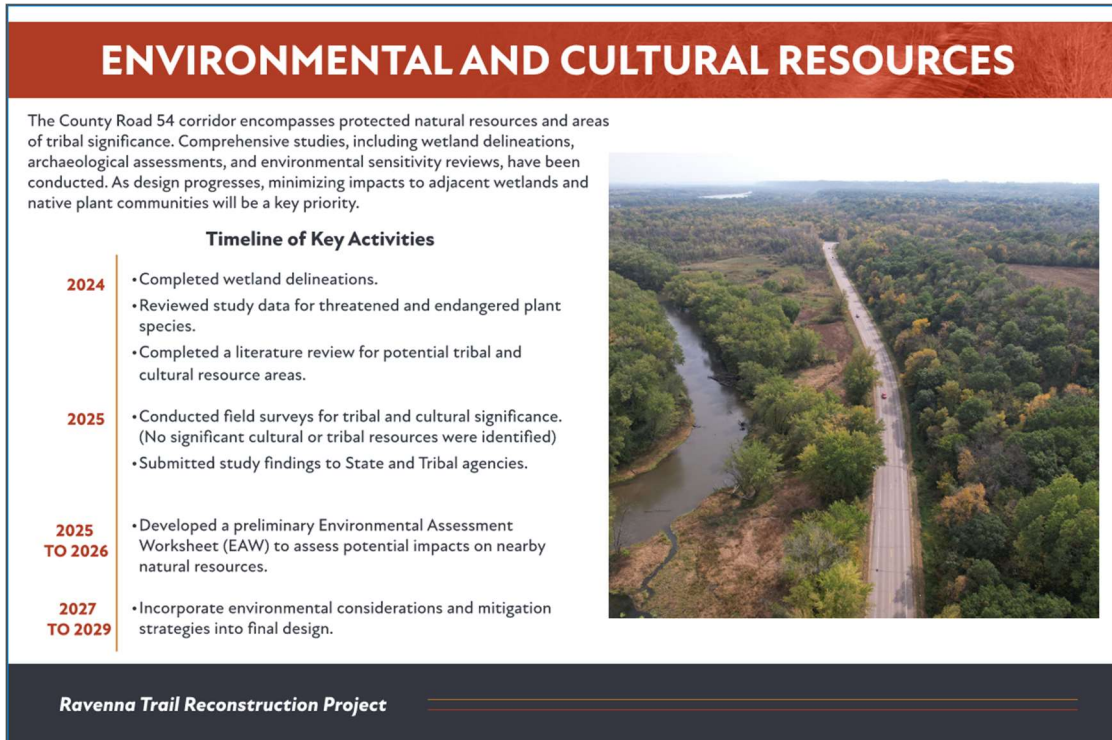
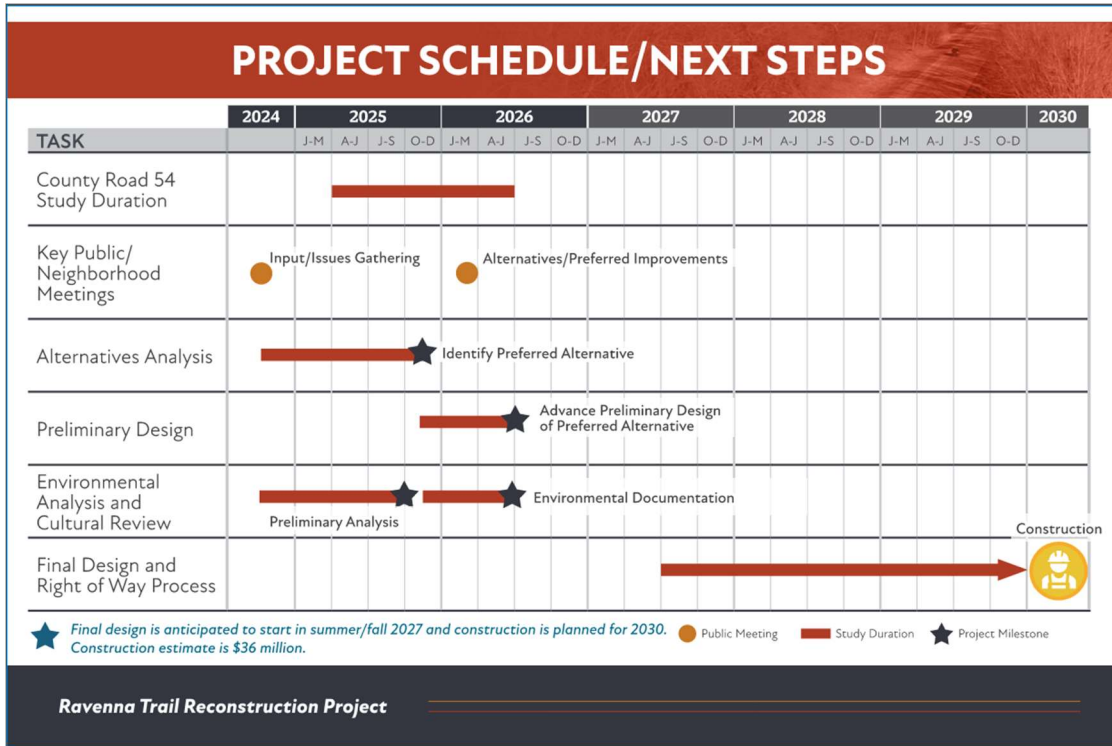
- Preferred greenway trail system
- Trail further from highway
- Requires additional space

### URBAN TYPICAL SECTION



- To be used in more constrained areas
- Curb/gutter on trail side
- Constrained by rail, grading, and right-of-way

Ravenna Trail Reconstruction Project



## MISSISSIPPI RIVER GREENWAY CONNECTION

Dakota County has completed 28-miles of the Mississippi River Greenway trail connecting St. Paul to Hastings with an off-road facility. The 2009 Hastings to Red Wing Trail Plan continues the vision for the regional trail system that would ultimately continue into Goodhue County and beyond. The reconstruction need of Ravenna Trail presents an opportunity to efficiently construct 7-miles of the trail system. Future connections of the greater regional trail vision will include:

- Downtown Hastings
- Prairie Island
- Cannon Valley Trail
- Downtown Red Wing
- Cannon Falls
- Lake Byllesby Regional Park

Mississippi River Greenway (MRG) to Red Wing, Prairie Island

(The trail routes in this graphic were identified in the Hastings - Red Wing Trail master plan report completed in 2009 and updated in 2023 through the Reconnecting Communities and Neighborhood grant application.)



Ravenna Trail Reconstruction Project

## GOALS AND BENEFITS OF TRAIL CONSTRUCTION

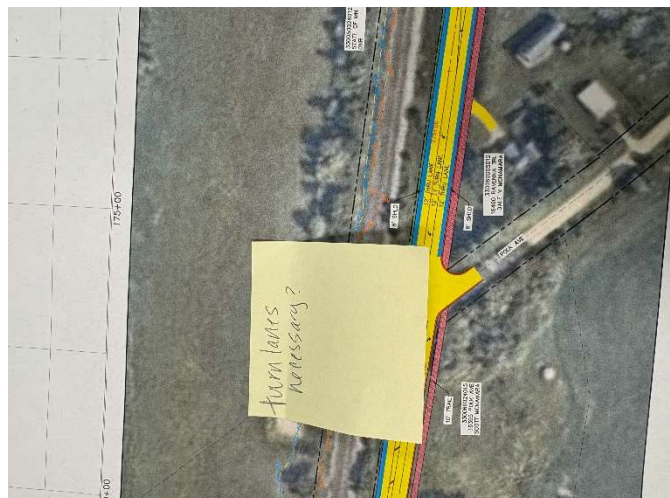
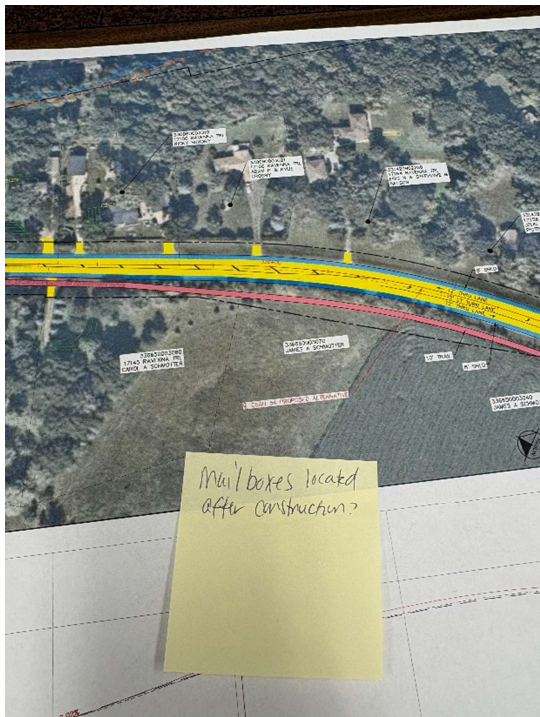
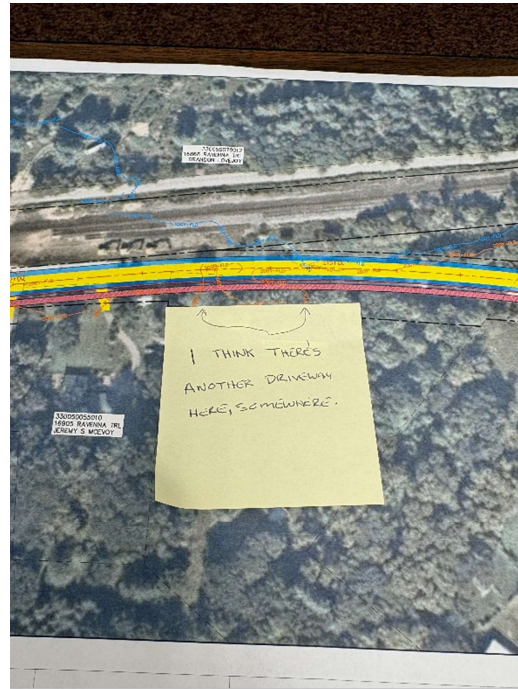
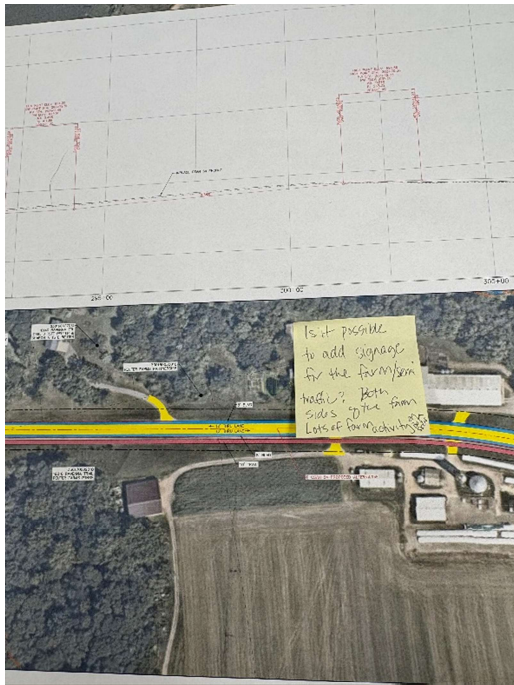
Inclusion of the paved trail with the highway reconstruction fulfills the long-term vision for a regional trail connection between Hastings and Prairie Island, while also providing opportunities for future expansion to Red Wing.:

- A dedicated trail increases safety by separating bicyclists and pedestrians from high-speed vehicle traffic, minimizing the risk of accidents due to curves and limited visibility, compared to on-road cycling. A dedicated trail for vulnerable users also...

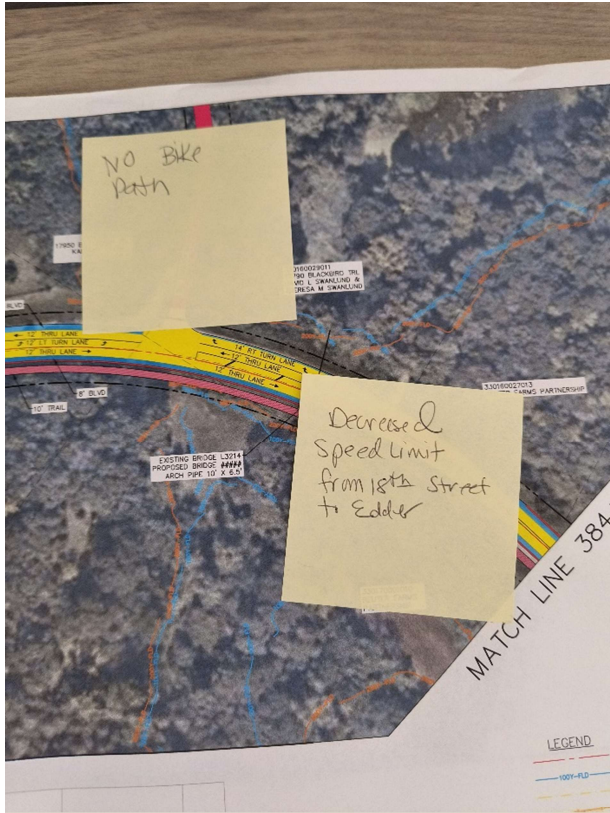
  - ✔ Provides a predictable, designated pathway free from potential conflicts with motor vehicles, ensuring safety and comfort for all users.
  - ✔ Accommodates users of all ages and abilities, offering a safe environment for recreational and commuting purposes.
- It is more cost effective to build a trail segment as part of a highway construction project rather than as a standalone effort at a later date. This also reduces future disruptions to property owners and the traveling public.
- Minnesota's portion of the Mississippi River Trail, designated as U.S. Bicycle Route 45, follows the river from its source at Itasca State Park to the Iowa border, currently utilizing the road shoulders of State Highways 316 and 61 between Hastings and Red Wing. Extending the trail along Ravenna Trail would enable U.S. Bicycle Route 45 to transition to a separated, off-road trail.

Ravenna Trail Reconstruction Project

## Layout Post-It Note Comments







# Comment Form

April 8, 2026, 5:00 p.m. – 7:00 p.m.  
Ravenna Township Hall

## Comments:

I understand the need for the road improvements.  
However, placement of the bike trail is not feasible  
at this time. Dakota County has financial issues and  
until that stabilizes, it is not important.

# Comment Form

April 8, 2026, 5:00 p.m. – 7:00 p.m.  
Ravenna Township Hall


## Comments:

I think it would be a bad idea  
to put curbs in, melting snow would  
~~be~~ pool up and it would make it  
harder to plow snow

# Comment Form

April 8, 2026, 5:00 p.m. – 7:00 p.m.  
Ravenna Township Hall

## Comments:

 I live on County Road 54 and strongly oppose this project due to the dangerous road conditions that are present right now. You will make more danger to pedestrians.

# Comment Form

April 8, 2026, 5:00 p.m. – 7:00 p.m.  
Ravenna Township Hall

## Comments:

Just not sure how a round a bout  
was decided on in place of the  
existing stop sign.

Also wondering how the changes on  
Ravenna Tr will impact families +  
properties



# Comment Form

April 8, 2026, 5:00 p.m. – 7:00 p.m.  
Ravenna Township Hall

## Comments:

I agree Ravenna trail needs improvement.

I Dont agree it needs a bike trail along side it.

There are better routes available w/ enough room  
To add a trail far better than Ravenna.

# Comment Form

April 8, 2026, 5:00 p.m. – 7:00 p.m.  
Ravenna Township Hall

## Comments:

Excellent work keeping it mostly  
within the existing roadway  
foot print.

Great video!

I'm excited for the bike trail!

## Comment Form

April 8, 2026, 5:00 p.m. - 7:00 p.m.  
Ravenna Township Hall

### Comments:

I understand the need for road improvements. Ravenna Trails traffic has increased due to homes beeing built and the Casino growth. What I don't understand is the need for a bike trail. No one in their right mind should be riding a bike on that road. There are speed limits and no passing zones but people don't care. I live on a straight away, speed limit is 55. Thats not what they are doing. I'm guessing anywhere from 60-70 mph. Some even faster. Motorcycles are up on their back wheels. This is a secluded road and theres not enough law enforcement to constantly patrol this road.

My mailbox is on the opposite side of my home. As it is now I have to constantly watch before, during, & returning back for traffic. They go so fast one minute it's clear then one speeds by. If this road is widened then I'll have further to cross.

We have installed security cameras and a home security system. The increase of theft and trespassing made this absolute necessity. ~~#~~ Adding a bike trail will only make this worse. Bikes won't be the only ones on that trail. Because the road is secluded the ATV's, dirt bikes and other motorized vehicle will be on it. Plus the increase of trash. Now you have another expensive to maintain this trail.

Thank you for hearing my concerns. This is only a small portion. But please listen to the land and home owners. We didn't want it thirteen years ago and we don't want it now.





# Transportation Project Feedback

Required fields are marked with an asterisk \*

**First Name**

[Redacted Name Fields]

**Project Title**

County Road 54 (Ravenna Trail) Reconstruction, Ravenna Township

**Comments**

As the Ride Leader for the Rosemount Cycling Club, I am writing to provide technical feedback regarding the proposed construction on CR 54. Our club frequently utilizes Dakota County’s expansive trail network, including the Minnesota and Mississippi River Greenways. While these facilities are excellent, the current state of CR 54 presents significant safety risks for group transit.

1. The Challenge: Infrastructure vs. Group Dynamics

Our typical ride consists of 15 to 25 cyclists. On CR 54, we are currently forced into high-stress interactions with motor vehicles due to two primary factors:

- Substandard Shoulders: The current width does not accommodate a group of our size safely.
- Invasive Rumble Strips: When rumble strips are placed in the center of a narrow shoulder, they effectively render the remaining pavement unusable for cyclists, forcing us to merge into the primary traffic lane.

2. Proposed Solution: Dedicated Off-Road Paths

We strongly advocate for a parallel bike path as the primary solution. Dedicated paths—like those found at Lake Byllesby or Spring Lake Park Reserve—are proven to separate vulnerable road users from high-speed traffic, reducing the "near-miss" frequency.

To ensure this path is truly functional for group use, we urge the design team to:

- Minimize 90-Degree Turns: Sharp geometries at intersections create bottlenecks and "accordion effects" that lead to internal group crashes.

- Prioritize Sightlines: Maintaining clear visibility at trail-roadway intersections is critical for single rider or a pack of 20+ riders to clear a crossing safely.

### 3. Alternative Solution: Enhanced Shoulders

If a separated path is not feasible, the roadway must be designed to modern multi-modal standards. A 6-to-8-foot shoulder is the minimum width required to allow a group to stay clear of the travel lane. Crucially, any rumble strips should be placed on the fog line rather than near the center of the shoulder to preserve a clear, continuous "sweepable" surface for tires.

### 4. Community and Economic Value

Cycling clubs like ours bring significant activity to Dakota County. By investing in predictable, wide, and well-designed cycling infrastructure on CR 54, the county isn't just building a path—it is reducing liability, improving traffic flow for motorists, and cementing its reputation as a premier destination for outdoor recreation.

We look forward to seeing a design that prioritizes the safety of all road users.

---

**EXTERNAL EMAIL WARNING:** This email originated from outside Dakota County. Unless you are expecting this email, **DO NOT** click on attachments, links, or enter your credentials to login.

---

Dear Project Manager(s) -

We are unable to attend the recently announced Open House for this project, but want to relay that we continue to have serious concerns. Our homestead/farm received Century Farm status in 1976 (continuous family operation), and this year will mark 150 years. The 7th generation of family is now living on this property. Although we are unable to attend, some of our family (daughters, grandchildren and great-grandchildren) will hopefully be able to attend in our absence.

Our concerns include the fact that County Road 54 runs through primarily farm land and their homesteads. It should not be construed to be a major thoroughfare such as that which runs through Apple Valley, with commercial enterprises. We do not welcome faster and more traffic running by our homes, and endangering our family and animals. As it is, the last "improvement" project on this road (as we predicted) only resulted in more traffic, faster traffic, heavier traffic and several more incidents of vehicle accidents crashing through our pasture fences. The current project can only make these problems increase.

We are not the only farm that has land on both sides of this county road. We urge you to reconsider your plans, and want to preserve the rural environment that we currently enjoy (and the 150 year history). We fear that this project will only result in faster and heavier traffic flow past our farm and homes. Why can't you enforce the existing speeds to limit accidents and damage to the roads?

Thank you for listening (we hope you do).

This message (including any attachments) contains confidential information intended for a specific individual and purpose, and is protected by law. If you are not the intended recipient, you should delete and/or dispose of this message in a safe manner. Any disclosure, copying or distribution of this message, or the taking of any action based on it, is strictly prohibited.



# Transportation Project Feedback

Required fields are marked with an asterisk \*

[Redacted]

[Redacted]

[Redacted]

[Redacted]

[Redacted]

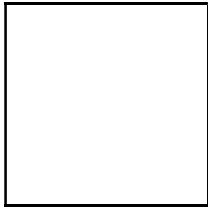
[Redacted]

**Project Title**

County Road 54 (Ravenna Trail) Reconstruction, Ravenna Township

**Comments**

I am in favor of the reconstruction and added bike path on Ravenna Trail. My son bikes along this road in the summer and I would feel much better with a dedicated bike lane. I also believe the speed can be brought to a safer level with the reconstruction. I think a dedicated bike path out of Hastings to the south is long overdue.



# Dakota County (MN)

## Transportation Project Feedback

A new Transportation project feedback form has been submitted by a Dakota County resident.

[Open Form](#)

### Entry Details

[REDACTED]	[REDACTED]
[REDACTED]	[REDACTED]
[REDACTED]	[REDACTED]
[REDACTED]	[REDACTED]
[REDACTED]	[REDACTED]
PROJECT TITLE	County Road 54 (Ravenna Trail) Reconstruction, Ravenna Township
COMMENTS	I hate it. We moved out of town to get away from 'town'.



# Transportation Project Feedback

Required fields are marked with an asterisk \*

[Redacted] [Redacted]  
 [Redacted] [Redacted]

[Redacted] [Redacted]  
 [Redacted] [Redacted]

[Redacted]  
 [Redacted]

**[Redacted] Title**

County Road 54 (Ravenna Trail) Reconstruction, Ravenna Township

**Comments**

I'm a cyclist and have ridden Ravenna Trail a bunch of times so this project would be a good thing in my view. Currently, it is a road I would only ride with a group because it doesn't feel very safe solo when it is more difficult for vehicles to see just one rider. I think either solution of a separate path or just widening and making nice big shoulders would be great. Thanks.

Highway 54 Open House #2 Online Interactive Map Comments

Project	ProjectPhase	CommentCategory	CommentCategoryType	Language	Message	SentimentType	EmailAddress	UpVotes	DownVotes	Type
County Road 54 Reconstruction Project	Phase 1	Opportunities	Point	en	A roundabout here would be a great addition. Please put something in the center so cars can't drive over the top disregarding the intention of the roundabout.	Mixed	[REDACTED]	0	0	Point
County Road 54 Reconstruction Project	Phase 1	Concerns	Point	en	I am concerned I will get rear ended making a left turn into my driveway as people will assume I am just moving into the turn lane.	Neutral	[REDACTED]	0	0	Point
County Road 54 Reconstruction Project	Phase 1	Concerns	Point	en	That road is way to busy n narrow ..there's houses right next to the road n shirt driveways n there's places that are way to steep .if you want more fatalities put it in ..If not find so.+thing else to spend money on .Thus is way to foolish	Negative	[REDACTED]	0	0	Point
County Road 54 Reconstruction Project	Phase 1	Concerns	Point	en	Bullshit, that the county would encroach even farther onto my property than my neighbors. I have limited flat area along that stretch. Respect our property rights!	Mixed	[REDACTED]	0	0	Point



# **County Road 54 Reconstruction & Mississippi Greenway Extension**

## **Trail Inclusion Update CP 54-011**

**Physical Development Committee**

**June 16, 2026**

Presenter: John Sass, Transportation Project Manager

# Project Overview



- Reconstruction of 7 miles of CSAH 54
- High-risk rural corridor with safety and flooding issues
- Addresses geometric, drainage, and visibility deficiencies
- Evaluates trail option within regional connectivity plans

# Purpose & Need



- ~200 crashes over 10 years
  - including 4 fatalities
- ~3 miles lacking standard shoulders
- 8 curves below 55-mph design speed
- 4 segments below 100-year floodplain
- Improves safety, drainage, and flood resiliency

# Petition Acknowledgment



- Petition received April 21
- Concerns:
  - Property impacts
  - Privacy
  - Rural character
  - Fiscal stewardship
  - Environmental considerations
- Evaluation through:
  - Design refinement
  - EAW
  - Agency Coordination

# Petition Concerns



- Environmental impacts
- Property rights
- Fiscal responsibility
- Community priorities
- Request to pause project development
- Themes align with two years of engagement

# Environmental Assessment Summary



- Draft EAW completed (roadway + trail)
- ~2.3 acres of wetland impact
- No expected listed-species impacts
- Ongoing MnDNR coordination
- EAW valid with or without trail

# Right-of-Way Impacts



- Road only: ~7.1 acres
- Road + trail: ~9.9 acres
- ~2.8 Additional acres across corridor
- ~86% of trail alignment within existing ROW
- Impacts primarily in constrained areas (slopes, drainage, walls)
- Common concerns: proximity, privacy, rural character
- Similar rural trails typically do not increase trespass

# Alternatives and Cost



Evaluation Criteria For Project Goals	1: Road - No Trail	2: Road & Paved Trail	3: Road & Graded Trail	4: Future Trail
<b>ROW Impacts (Acre)</b>	<b>7.1</b>	<b>9.9</b>	<b>9.9</b>	<b>2.8</b>
<b>Impacts &lt; 60' from home (#)</b>	<b>8</b>	<b>14</b>	<b>14</b>	<b>6</b>
<b>Walls Needed (#)</b>	<b>0</b>	<b>4</b>	<b>4</b>	<b>4</b>
<b>Curb &amp; Gutter/Storm Sewer (Miles)</b>	<b>1.3</b>	<b>4.2</b>	<b>4.2</b>	<b>2.9</b>
<b>Wetland Impacts (Acre)</b>	<b>2.1</b>	<b>2.3</b>	<b>2.3</b>	<b>0.2</b>
<b>Meets Greenway Goals for Trail Connectivity</b>	<b>No</b>	<b>Yes</b>	<b>long term</b>	<b>long term</b>
<b>Right of Way Cost</b>	<b>\$2.0 M</b>	<b>\$2.5 M</b>	<b>\$2.5 M</b>	<b>\$0.5 M</b>
<b>Construction Cost</b>	<b>\$25.0 M</b>	<b>\$33.5 M</b>	<b>\$32.2 M</b>	<b>\$8.6 M</b>
<b>Total Estimated Cost Right of Way + Const</b>	<b>\$27.0 M</b>	<b>\$36.0 M</b>	<b>\$34.7 M</b>	<b>\$9.1 M<sub>45</sub></b>

# Cost Comparison



2030 Construction Total Estimated Cost	Paved Trail	Graded Trail	No Trail (Future)
Road Construction	\$27	\$27	\$0
Trail Construction	\$9	\$7.7	\$9.1
Total Construction	\$36	\$34.7	\$9.1
Future Trail Costs 4% Interest	---	Paving	ROW + Grading +Paving
Trail Baseline	---	\$1.3 M	\$9.1 M
+5 years	---	\$1.6 M	\$11.1 M
+10 years	---	\$ 1.9 M	\$13.5 M <sup>46</sup>

- Safety is top community priority
- Mixed trail views (safety vs privacy)
- Both options viable
- Regional partners support connectivity

- Broad support for safety improvements
- Desire for improved curves, shoulders, visibility
- Safety work advances regardless of trail
- Trail not required for reconstruction

# Public Input Themes



- Support for safety improvements
- Mixed views on trail impacts
- Rural-character & farm-access concerns
- Sightlines & driveway visibility needs
- Snowplow, drainage & property-impact issues
- Themes consistent with petition

# Petition Concerns: Staff Responses



- Environmental: no significant impacts; mitigation planned
- Property rights: ~86% of alignment in existing ROW
- Fiscal: trail adds cost; grant reduces burden
- Priorities: safety remains primary concern
- Project pause: reconstruction and EAW proceed

# Next Steps



- Board direction on trail inclusion
- EAW publication following Board awareness
- June 23: Board consent (EAW & Grant)
- Submit CP 54-11 to 2026 Regional Solicitation
- Begin EAW public comment period
- Continue MnDNR and local coordination
- Refine design based on Board guidance

- Summary of project status and key findings
- Staff available for questions
- Board guidance requested



# Physical Development Committee of the Whole

## Request for Board Action

Item Number: DC-5592

Agenda #: 5.2

Meeting Date: 6/16/2026

**DEPARTMENT:** Transportation

**FILE TYPE:** Regular Information

### TITLE

**Update On Safety And Operations At County State Aid Highway 50 And 60 Intersection In City Of Lakeville**

### PURPOSE/ACTION REQUESTED

Provide information on the status of the roundabout at County State Aid Highway (CSAH) 50 and CSAH 60 from a safety and operations perspective along with recommended mitigations.

### SUMMARY

County staff has undertaken detailed analysis on the CSAH 50 and 60 roundabout reviewing safety and operations. This intersection has the highest crash metrics (exceeding critical thresholds by 5-8 times) across the County and continues to have high crashes despite improvements to signage and striping since its installation.

County staff has conducted an analysis in coordination with the City of Lakeville to determine how the intersection will operate in the future with forecasted traffic volumes and during the Interstate 35 and CSAH 50 interchange project with detours in place. The analysis shows the current roundabout configuration will likely continue to result in high crashes and cause excessive vehicle delay over time (reaching failing levels) which will be detrimental to the safety and mobility of drivers. Alternatives to the roundabout were evaluated including right-turn bypasses and a traffic signal.

### RECOMMENDATION

Information only; no action requested

### EXPLANATION OF FISCAL/FTE IMPACTS

- None
- Current budget
- Other
- Amendment Requested
- New FTE(s) requested

### RESOLUTION

Information only; no action requested

### PREVIOUS BOARD ACTION

None.

### ATTACHMENTS

Attachment: Presentation Slides

**BOARD GOALS**

- Thriving People       A Healthy Environment with Quality Natural Resources  
 A Successful Place for Business and Jobs       Excellence in Public Service

**CONTACT**

Department Head: Erin Laberee

Author: Tyler Krage



# Update on Safety and Operations at CSAH 50/CSAH 60 Roundabout

Dakota County Physical Development Committee of the Whole

June 16, 2026

Tyler Krage, County Traffic Engineer

# Agenda

- Intersection Background
- Mitigations and Analysis up to this Point
- Option Review
- Options Comparison
- Questions and Discussion



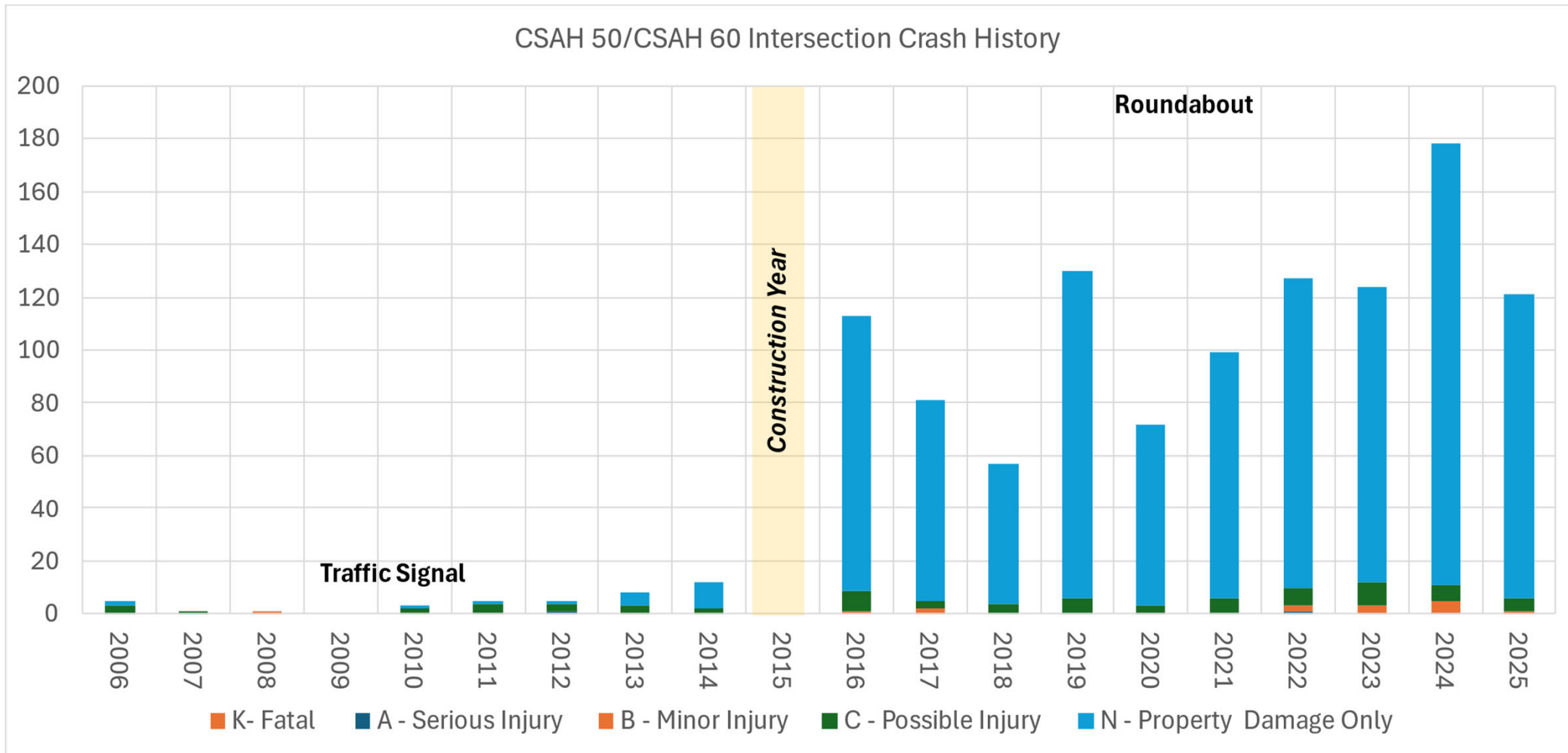
# CSAH 50/60 Background



- Roundabout Constructed in 2015
- Highest Crash Rate Index (CRI) of all intersections in County since 2019
- CRI ranges from 5.88 to 8.42 (1.00 or higher suggests crash issue)

Rate Category	Crash	Severity <sup>5</sup>	K/A
Intersection	8.42	9.23	1.40
State Average <sup>3</sup>	0.97	-	0.46
Critical <sup>4</sup>	1.28	-	2.19
Critical Index	6.57	-	0.64

# CSAH 50/60 Background



# Mitigations and Analyses



- Public Education Campaigns/Meetings (From City & County) 2016-2018
- Enhanced Police Enforcement Campaign 2018
- Overhead Signage Installation 2018
- Various Signage & Striping Reconfigurations 2016-2021
- MnDOT & FHWA Research Projects 2018 & 2019
- Pedestrian Crossing Study & Improvements 2022
- In-Depth Crash Review Trends Study 2024
- Industry Leader Design Peer Review & Recommendations 2024-2025
- Traffic Control Analysis 2025-2026

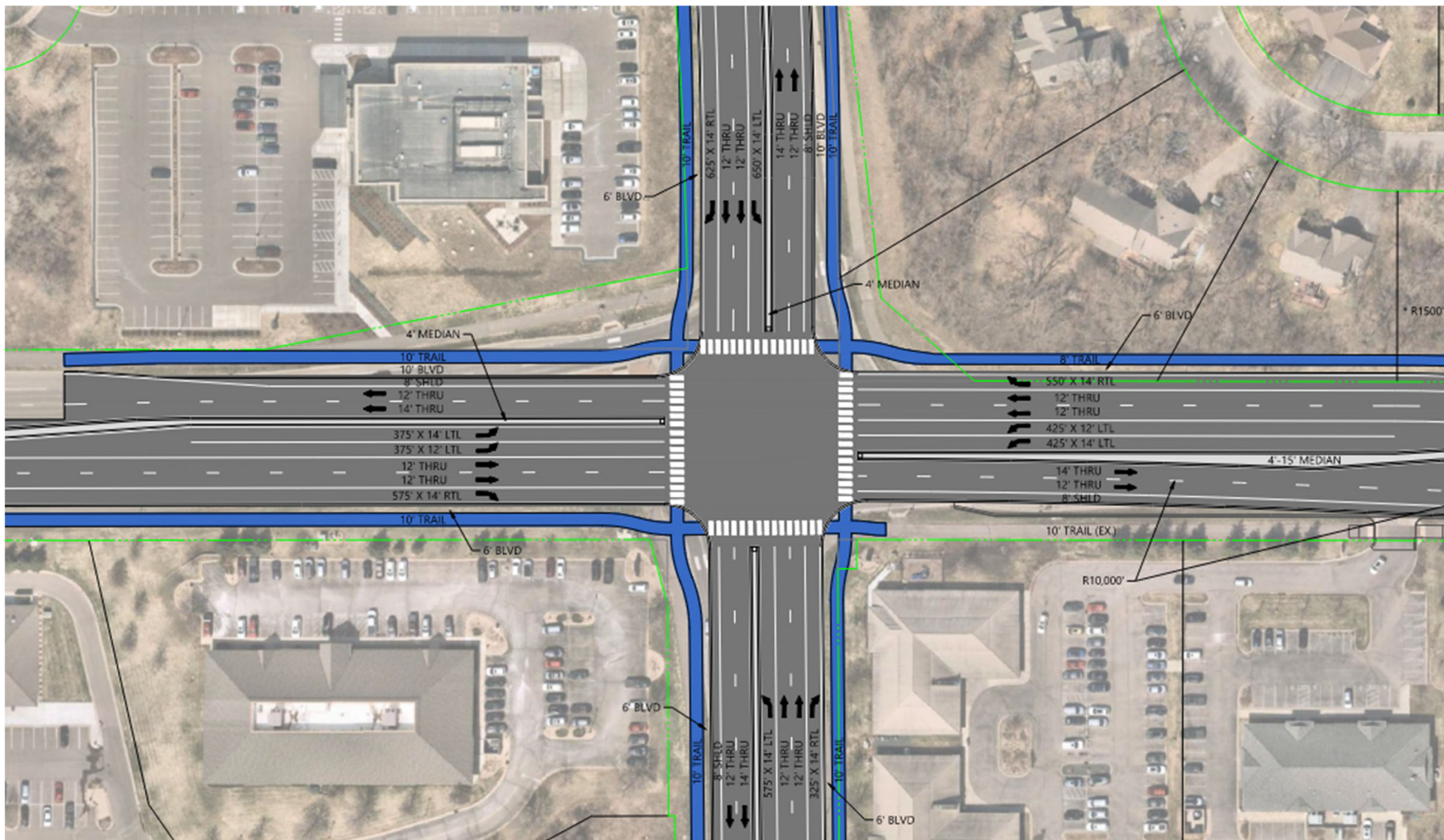
# Option 1 Enhanced Roundabout Improvements

- Pedestrian Beacons and “Z-crossings” to Further Separation of Pedestrians from Exiting Traffic
- Permanently Buffered Lanes with Mumble Strips in Buffers
- Leveling Around Central Mound





# Option 3 Traffic Signal Conversion



How do these options compare against each other?

- Safety / Crash Reductions
- Delay and Future Operations
  - Detour Resilience

# Options Comparison

## Safety – RAB vs RAB w/ Bypasses

- Both Roundabout Options see slightly better pedestrian safety
- Small / negligible crash reduction from buffered lane improvements
- Bypasses may make ped crossings slightly harder
- Bypasses expect a max of 2% crash reduction
- Core 2x2 RAB crash issue still exists in each RAB Option



# Options Comparison Safety – Roundabout vs Signals



Roundabouts generally have less severe crashes than traffic signals

2022-2025 Crash Severity Comparison								
Intersection	Type	AADT	K	A	B	C	N	Total
CSAH 50 & CSAH 60	RAB	47,000	0	1	9	22	396	428
CSAH 42 & CSAH 23	Signal	79,700	0	0	4	10	101	115
CSAH 31 & CSAH 42	Signal	57,350	0	2	4	8	53	67

K=Fatal A=Incapacitating Injury B=Minor Injury C=Possible Injury N=Property Damage Only

CSAH 50/60 RAB creates 3x the amount of taxpayer crash costs compared to higher volume signals

# Options Comparison Safety – Roundabout vs Signals



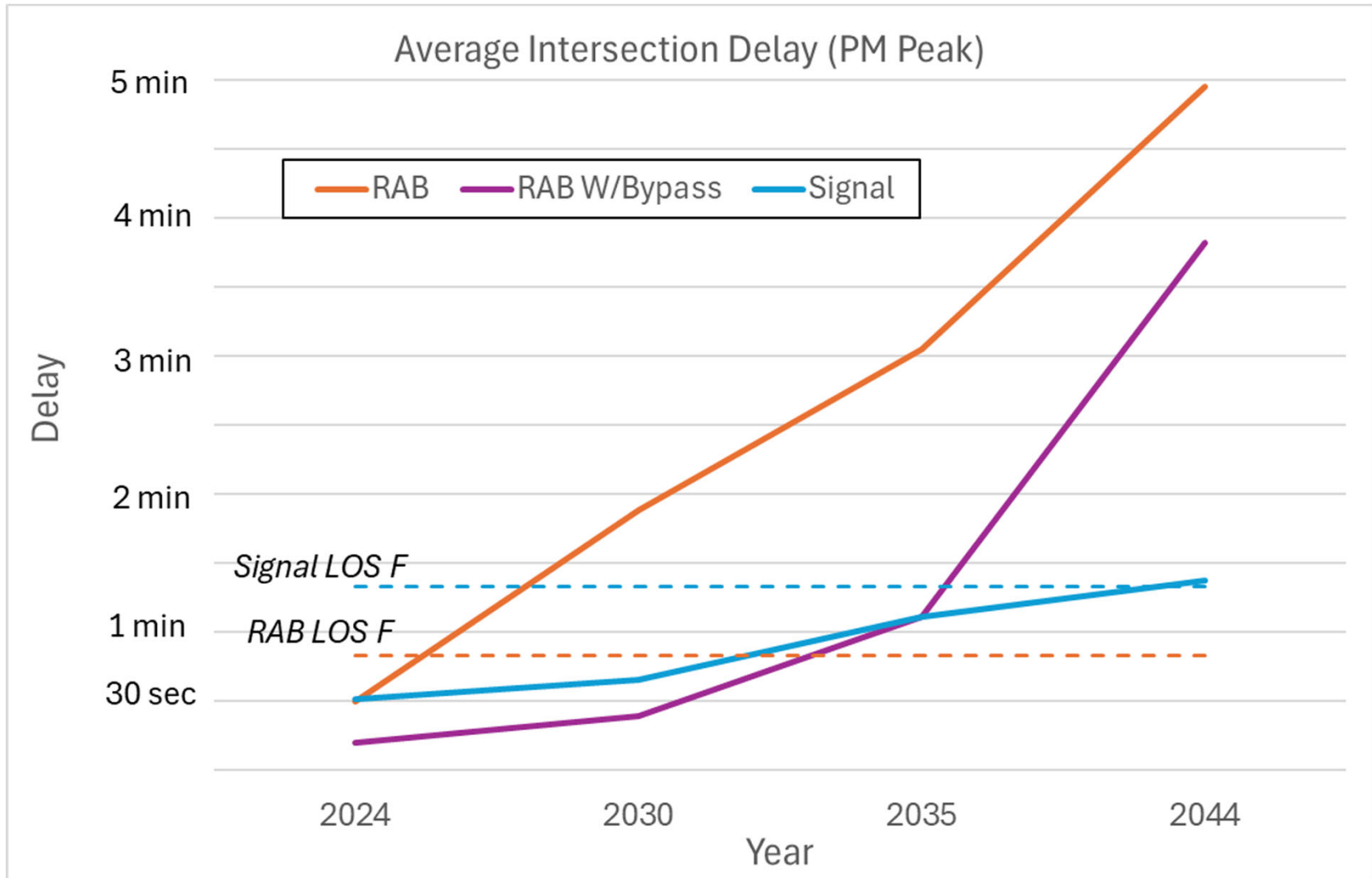
## Current Day Crash Prediction of CSAH 50/60 as a Signal

Type	K	A	B	C	N	Total
RAB Current Yearly Average	0	1	3	7	132	143
Signal Predicted Yearly Average	0	0	1-2	2-6	23-59	26-67

K=Fatal A=Incapacitating Injury B=Minor Injury C=Possible Injury N=Property Damage Only

Signal may experience 80% to 50% reduction in crashes compared to Roundabout configuration

# Options Comparison Delay and Operations

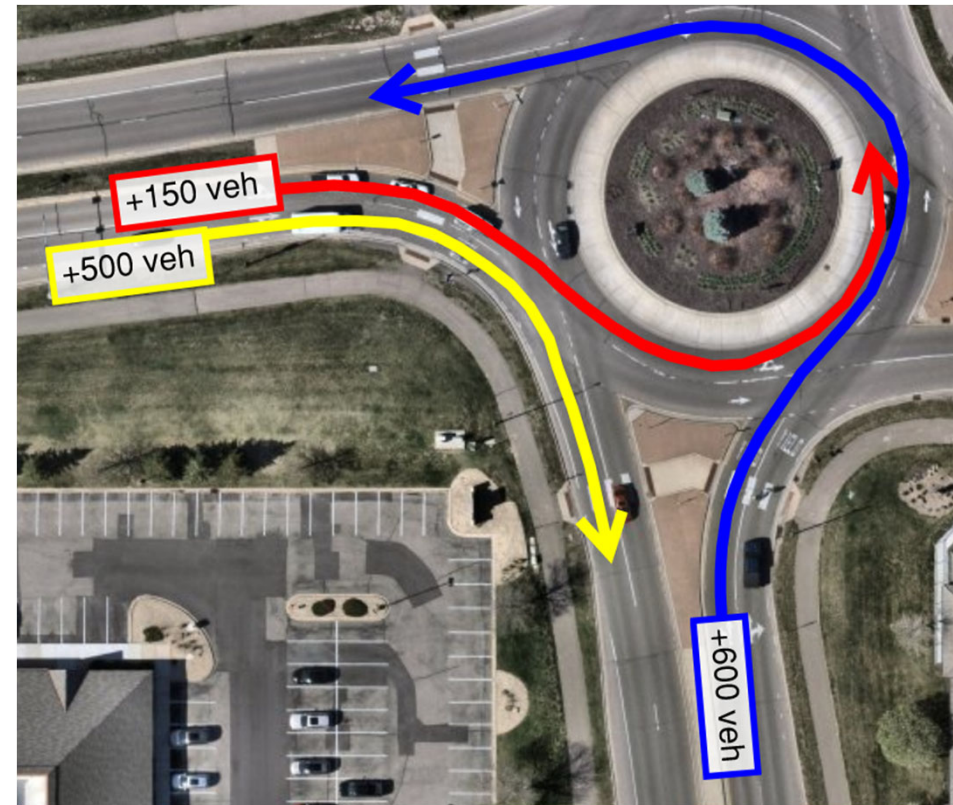


Bypass Option has AM worst-case movements of 5 minutes in 2030

# Options Comparison Detour Operations

Roundabouts are unable to respond to changes in volumes as flexibly as a traffic signal

Construction Detour Delays (PM Peak)			
	Overall Delay (s)	Worst Movement Delay (s)	Worst Movement
2x2 RAB	141 sec	725 sec	NBL
2x2 RAB W/Bypass	124 sec	585 sec	NBT
Traffic Signal	48 sec	74 sec	EBL



# Overall Options Comparison



Option	Safety Improvement	Delay Improvement	Cost	Detour Resilience
Option 1 – Enhanced RAB	* Minor improvements	* No delay improvements	*** \$100,000-200,000	* Major impacts
Option 2 – Enhanced RAB with Right Turn Bypasses	* Minor improvements plus 3% RT crash reduction	** Delay improvements for certain movements	** ~\$500,000	** Major impacts, but Eastbound Right is improved
Option 3 – RAB to Signal Conversion	*** Per signal comparisons, may see 80-50% crash reduction	*** Major delay improvements and ability to adapt to changing traffic	* ~\$3,000,000	*** High adaptability to changing conditions

Key -  
 \* (No to Minor Improvement)      \*\* (Some Improvement)      \*\*\* (Major Improvement)

- PDC Discussion and Decision (today)
- Present to Lakeville City Council
- Return to County Board for Final Direction
- Develop Public Engagement Plans and Start Design Work for Selected Option

# Questions?



# Physical Development Committee of the Whole

## Request for Board Action

Item Number: DC-5356

Agenda #: 5.3

Meeting Date: 6/16/2026

**DEPARTMENT:** Parks

**FILE TYPE:** Regular Information

### TITLE

**Update And Direction On Recommended Park Ordinance 107 Amendments**

### PURPOSE/ACTION REQUESTED

Provide the Dakota County Board of Commissioners with an update on proposed amendments to Park Ordinance 107.

### SUMMARY

Ordinance No. 107 is a document that provides rules and regulations on the public use of County park lands. This includes rules for recreational activities, public safety, fair use, and the preservation of natural and cultural resources, among others.

The existing Ordinance was enacted in 2023, and over the past two and a half years, staff has identified areas within the Ordinance that require clarification to allow for proper enforcement and better alignment with State guidelines, Met Council taskforce recommendations, and the recently adopted 2050 Parks Vision Plan.

Areas for revision include language and activity description updates, permitting hunting on conservation easements, and expanded regulations and improved enforcement strategies for electric-powered devices.

All proposed amendments include input from both the Dakota County Sheriff's Office and the Dakota County Attorney's Office.

### RECOMMENDATION

Information only; no action requested.

### EXPLANATION OF FISCAL/FTE IMPACTS

- None
- Current budget
- Other
- Amendment Requested
- New FTE(s) requested

### RESOLUTION

Information only; no action requested.

### PREVIOUS BOARD ACTION

23-202; 5/23/23

**ATTACHMENTS**

Attachment: Park Ordinance 107 Proposed Amendments

Attachment: Presentation Slides

**BOARD GOALS**

- Thriving People
- A Healthy Environment with Quality Natural Resources
- A Successful Place for Business and Jobs
- Excellence in Public Service

**CONTACT**

Department Head: Georg Fischer

Author: Niki Geisler



~~PARK ORDINANCE~~  
~~2023 UPDATE FOR~~  
~~PUBLIC~~  
~~HEARING~~ PARK  
ORDINANCE 2026  
UPDATE FOR  
PUBLIC HEARING

ORDINANCE NO. 107  
PARK ORDINANCE

ADOPTED BY THE DAKOTA COUNTY BOARD  
OF COMMISSIONERS

APPROVED BY THE MINNESOTA  
DEPARTMENT OF NATURAL RESOURCES

**TABLE OF CONTENTS**  
Dakota County Ordinance No. 107  
County Park System Use

<b>Chapter 1 - Purpose/Authority/Definitions.....</b>	<b>3</b>
Section 1.1 - Purpose.....	3
Section 1.2 - Statutory Authority.....	3
<b>Chapter 2 - Regulation of Public Use .....</b>	<b>8</b>
Section 2.1 - Parks and Greenway Hours.....	8
Section 2.2 - Permits.....	8
<b>Chapter 3 - Regulations of General Conduct.....</b>	<b>10</b>
Section 3.1 - Proper Attire/Exposure.....	10
Section 3.2 - Alcohol and Drug Use .....	10
Section 3.3 - Smoking and Electronic Delivery Device Use .....	11
Section 3.4 - Gambling .....	11
Section 3.5 - Nuisance/Private Property.....	11
Section 3.6 - Littering .....	11
Section 3.7 - Possession/Use of Firearms/Dangerous Weapons/Fireworks .....	12
Section 3.8 - Interference with Employee Performance of Duty .....	12
Section 3.9 - Child Safety.....	12
Section 3.10 - Assembly.....	12
<b>Chapter 4 - General Parkland Operation Regulations .....</b>	<b>13</b>
Section 4.1 - Commercial Use.....	13
Section 4.2 - Noise/Amplification of Sound .....	14
Section 4.3 - Fires .....	14
Section 4.4 - Aviation.....	15
Section 4.5 - Amusement Contraptions.....	15
Section 4.6 - Pets in Parks.....	15
Section 4.7 - Unlawful Occupancy .....	15
<b>Chapter 5 - Property, Structures, and Natural Resources Protection .....</b>	<b>16</b>
Section 5.1 - Destruction/Defacement of Park Property/Signs .....	16
Section 5.2 - Foraging and the Collection/Harvesting of Wildlife and Natural Resources .....	16
Section 5.3- Disturbance of Natural Resources .....	
Section 5.4 - Disturbance of Wildlife .....	<del>17</del> <u>17</u>
Section 5.5 - Release of Harmful or Foreign Substances .....	17
Section 5.6 - Interference of Park Property.....	17
<b>Chapter 6 - Recreation Activity Regulations.....</b>	<b>18</b>
Section 6.1 - Camping.....	18
Section 6.2 - Picnicking.....	18
Section 6.3 - Swimming .....	18
Section 6.4 - Scuba Diving .....	18
Section 6.5 - Boating.....	19
Section 6.6 - Fishing.....	19
Section 6.7 - Horseback Riding .....	19
Section 6.8 - Bicycling.....	20
Section 6.9 - Hiking.....	20

Section 6.10 - Roller-Skating, In-Line Skating, and Skateboarding..... 20

Section 6.11 - Snowmobiling ..... 21~~20~~

Section 6.12 - Cross-Country Skiing ..... 21

Section 6.13 - Other Winter Activities ..... 21

Section 6.14 - Games and Active Recreation Activities ..... 21

Section 6.15 - Hammocking, Slacklining, and Other Line-Related Activities..... 21

Section 6.16 - Metal Detecting ..... 22

**Chapter 7 - Motorized Vehicles, Traffic, and Parking Regulations.....22**

Section 7.1 - Vehicle Operation ..... 22

Section 7.2 - Parking Vehicles..... 23

Section 7.3 - Motorized Vehicle Maintenance ..... 23

Section 7.4 - Motorized Recreational Vehicles ..... 23

**Chapter 8 - Enforcement.....25**

Section 8.1 - Park Patrol Authority/Authorized Agents ..... 25

Section 8.2 – Penalties ..... 25

**Chapter 9 - Miscellaneous.....26**

Section 9.1 - Exemptions ..... 26

Section 9.2 - Repeal..... 26

Section 9.3 - Enactment ..... 26

Section 9.4 - Notification ..... 26

Section 9.5 - Severability ..... 26

Section 9.6 - Amendment..... 26

**Chapter 10 - Effective Date .....27**

## Chapter 1 - Purpose/Authority/Definitions

### Section 1.1 - Purpose

The purpose of this ordinance is to further the enactment of the mission of the Dakota County Park System as stated in the Dakota County ~~Park System Plan~~2050 Vision Plan for Parks, Greenways, and Natural Systems:

“To enrich lives by providing high quality recreation and education opportunities in harmony with natural resource preservation and stewardship.”

In doing so, the Dakota County Board of Commissioners deems it reasonable, necessary, and desirable to enact an ordinance specifying rules and regulations to provide for the safe and peaceful use of park lands, conservation areas, and trails; for the education and recreation of the public; for the protection and preservation of park property, facilities, and natural resources; and for the safety and general welfare of the public.

### Section 1.2 - Statutory Authority

The Dakota County Board of Commissioners, under Minn. Stat. §§ 398.31–398.36, in performing its primary duty of the acquisition, development, operation, and maintenance of County parks, trails, and related facilities and providing the means for public access to lakes, rivers, streams and other natural features, is granted full power and authority to acquire and establish the above facilities and to operate, maintain, protect, and improve a park system and implement a recreational program. As aid to the accomplishment of these duties, the Board is granted the authority to enact ordinances and to declare that the violation thereof shall be punishable per state statute. Violations of the provisions of this ordinance or failure to comply with any of its requirements shall be punishable pursuant to Minn. Stat. § 398.34.

### Section 1.3 - Park Rules and Regulations

The Park Director has the authority to establish park rules and regulations which provide specific operational or procedural constraints, exemptions, and/or permissions to ordinance text.

The Park Director and Board of Commissioners reserve the right to promulgate park rules and regulations henceforth as it pertains to this ordinance.

No person shall violate rules and regulations that may be established by the Board or Park Director.

### Section 1.4 - Fees

It shall be unlawful for any person to use an area or facility or engage in an activity for which a fee has been established by the County Park Department and County Board without payment of such fee unless

fees are waived pursuant to a Special Use Permit or pursuant to a Parks-authorized community outreach or engagement program.

~~payment is waived by Special Use Permit.~~

### Section 1.5 - Definitions

The following list defines key terms used in this document.

**“Alcoholic Beverage”** includes any beverage as defined by State Statute containing more than one-half of one percent alcohol by volume.

**“Amplified Noise”** means the use or operation of any loudspeaker, sound amplifier, or other device for the production or reproduction of sound.

**“Amusement Contraption”** means any contrivance, device, gadget, machine, or structure designed to test the skill or strength of the user or to provide the user with any sort of ride, lift, swing, bounce, or fall experience including, but not limited to, ball throwing contest devices, electronic videos, animal ride devices, dunk tanks, ball and hammer devices, trampoline devices, and the like.

**“Authorized Adult”** means any person who is at least eighteen (18) years of age and authorized by a parent or guardian to have custody and control of a juvenile.

**“Barrels”** means any various units of volume or capacity as a liquid measure of 31 to 42 gallons.

**“Board”** means the elected members of the Board of Commissioners of Dakota County.

**“Commercial Use of Parks”** means any activity conducted in a park system that is associated with any trade, occupation, profession, business, or franchise. Commercial use of parks does not include activities conducted on the County’s behalf or in conjunction with the County.

**“Controlled Substance”** means a drug, substance, or immediate precursor in schedules I through V of Minn. Stat. 152.02.

**“County Park”** means those parks, park reserves, conservation areas, trails, greenways, and other areas designated by Dakota County Board of Commissioners as being a part of the County Park System.

**“Dangerous Weapon”** means any firearm, whether loaded or unloaded, or any device designed as a weapon and capable of producing death or great bodily harm, any combustible or flammable liquid or other device or instrumentality that, in the manner it is used or intended to be used, is calculated or likely to produce death or great bodily harm, or any fire that is used to produce death or great bodily harm.

As used in this subdivision, “flammable liquid” means any liquid having a flash point below 100 degrees Fahrenheit and having a vapor pressure not exceeding 40 pounds per square inch (absolute) at 100 degrees Fahrenheit but does not include intoxicating liquor. As used in this subdivision, “combustible liquid” is a liquid having a flash point at or above 100 degrees Fahrenheit.

**“Designated Area”** means an area or facility identified by the Parks Director for use in a specific manner.

**“Electronic Delivery Device,”** per Minn. Stat. § 609.685, subd. 1(c), " means any product containing or delivering nicotine, lobelia, or any other substance, whether natural or synthetic, intended for human consumption through inhalation of aerosol or vapor from the product. Electronic delivery device includes but is not limited to devices manufactured, marketed, or sold as electronic

cigarettes, electronic cigars, electronic pipe, vape pens, modes, tank systems, or under any other product name or descriptor.”

“**Electric Powered Device (EPD)**” means any electric mobility device used for the purpose of locomotion or any electric mobility device designed to operate in areas without defined pedestrian routes but that is not an ADA device such as a wheelchair. Example devices include electric scooters, e-bikes (electric-assist/pedal-assist), Segways, ~~golf carts~~, and the like. An e-bike is a bicycle with two or three wheels, a saddle, and fully operable human-propelled pedals.

“**Fishing**” means the activity of catching fish, either for food or as a sport.

“**Foraging**” means to search for and gather provisions.

“**Greenway**” means a shared-use ~~path~~ regional trail and associated land set aside for recreational use or environmental protection.

“**Hiking**” means traveling on foot, i.e., walking, running, or with an assistive mobility device.

“**Inhalant**” means any substance that releases vapors, and which is used by a person for the purpose of inducing symptoms of intoxication, elation, excitement, confusion, dizziness, paralysis, irrational behavior, or in any manner changing, distorting, or disturbing the balance or coordination of a person’s audio, visual, or mental processes.

“**Invasive Species**” means an organism that causes ecological or economic harm in a new environment where it is not native.

“**Keg**” means a small cask or barrel containing more than 288 ounces of alcoholic beverage.

“**Limited Designated Public Forum**” means areas within Dakota County parks that are intentionally opened for use by the public for a limited purpose, including, for example and without limitation, for use by certain persons/groups or for discussion of certain subjects.

“**Low-Impact Filming and Photography**” means outdoor filming and photography activities in areas open to the public involving five people or fewer, using equipment that will be carried at all times (except for small tripods used to hold cameras).

“**Metal Detecting**” means using an electronic device for detecting the presence of metal objects, typically located shallowly underground.

“**Motorized Recreational Vehicle**” means any motorized self-propelled, off-road, or all-terrain conveyance, including but not limited to a snowmobile, ATV, mini-bike, amphibious vehicle, go-cart, trail bike, or dune buggy.

“**Nonpublic Forum**” means areas within Dakota County parks that are not, either traditionally or by Dakota County parks designation, a forum for public communication, discourse, or expressive activity.

“**Nuisance,**” per Minn. Stat. § 561.01, means “[a]nything which is injurious to health, or indecent or offensive to the senses, or an obstruction to the free use of property, so as to interfere with the comfortable enjoyment of life or property....”

**“Park Director”** means the person appointed by the Board to serve as the chief administrative officer of the County Parks Department. The “Park Director” shall be deemed to be the Superintendent for purposes of Minn. Stat. § 398.35, subd. 1, and any other relevant law. The Park Director may also assign a designee to fulfill their responsibilities; and, therefore, *designee* is synonymous with Park Director as it pertains to this ordinance.

**“Park Visitor”** means any person, firm, partnership, association, corporation, governmental unit, company, or organization of any kind within a County Park.

**“Permittee”** means an individual, firm, corporation, society, or any group to whom a permit is issued.

**“Person or Persons”** means individuals, firms, corporations, societies, or any group or gathering whatsoever.

**“Pet”** means a domestic or tamed animal kept for companionship or pleasure.

**“Possession,”** in relation to a Controlled Substance, means:

Physical Possession: Having a controlled substance on one’s person with knowledge of the nature of the substance; or

Constructive Possession: Having once possessed a controlled substance, continuing to exercise dominion or control over the substance, aiding and abetting another in possessing a controlled substance, or being in the condition of having consumed or ingested a controlled substance.

**“Prepackaged beverages”** means beverages that are in their original, distributor or manufacturer direct container, bottle, box, or packaging.

**“Public Forum”** means the paved areas/sidewalks immediately outside public facilities (such as but not limited to visitor’s centers and nature centers) but not including parking lots/areas.

**“Service Animal”** means any dog that is individually trained to do work or perform tasks for an individual with a disability.

**“Smoking,”** per Minn. Stat. § 144.43, subd. 4, “means inhaling, exhaling, burning, or carrying any lighted or heated cigar, cigarette, pipe, or any other lighted or heated product containing, made, or derived from nicotine, tobacco, marijuana, or other plant, whether natural or synthetic, that is intended for inhalation. Smoking includes carrying or using an activated electronic delivery device, as defined in section 609.685.”

**“Special Use Permit”** means the written permission that must be obtained from the County Parks Department to carry out a given activity.

**“Trail” means a dedicated path within a park boundary, often with specific design, maintenance, and use standards and is distinct from a Greenway/Regional Trail as defined.**

**“Unmanned Aerial Vehicle (UAV)”** (commonly known as a drone) means an aircraft without any human pilot, crew, or passengers on board.

**“Vehicle”** means any motorized, self-propelled, animal-drawn, or human-powered conveyance.

**“Volunteer”** means a board- or department-appointed individual who provides services to the County without compensation.

**“Watercraft”** means any contrivance used or designed for navigation on water, except (1) a duck boat during the duck hunting season, (2) a rice boat during the harvest season, or (3) a seaplane. This definition includes but is not limited to motorboats, personal watercraft or jet skis, paddleboats, canoes, sailboards, and rafts.

**“Wildlife”** means any living creature, not human, wild by nature, endowed with sensation and power of voluntary motion, including quadrupeds, mammals, birds, fish, amphibians, reptiles, crustaceans, mollusks, insects, and County- and/or publicly owned animals.

## Chapter 2 - Regulation of Public Use

### Section 2.1 - County Park Hours

1. County Parks shall be open to the public from 5:00 a.m. until 10:00 p.m. unless otherwise designated by the Park Director. It shall be unlawful for any person to enter or remain in a park between 10:00 p.m. and 5:00 a.m. or such hours as may be posted by the Park Director or be in violation of Ordinance No. 122, Dakota County Juvenile Curfew Ordinance, except when in possession of a permit to do so, when camping in a designated camping area with a camping permit, or as users of a greenway traveling without delay.
2. Any park or portion thereof may be closed to the public by the Park Director at any time and for any interval of time or to certain uses as the Board or Park Director finds reasonably necessary.
3. Open hours for specific areas or facilities within a County Park may be set by the Park Director and may vary from those listed in Subdivision 1, including trailhead facilities located in and around greenways. ~~See Park Rules & Regulations – Greenways for specific greenway updates and availabilities. Information relating to open hours for specific areas or facilities will be maintained on the County’s Parks webpage.~~

The above items only apply to a greenway once jurisdictional transfer is completed; otherwise, local ordinance(s) have oversight. Additionally, all greenways are subject to all rules and regulations set forth in this ordinance.

### Section 2.2 - Permits

Special Use Permits (SUPs) shall be required for activities that are reasonably expected to have fifty or more persons involved, for activities involving the exclusive or special use of park grounds, greenways, trails, or facilities as allowed by this ordinance, ~~or~~ for the use of park grounds or facilities when they are otherwise allowed by this ordinance, closed to the public, ~~or for any use that would be considered a violation of the park ordinance and for activities for which a SUP is required pursuant to this Ordinance.~~

SUP conditions:

1. SUPs are issued by the Park Director or designated representative.
2. SUPs are not transferable.
- ~~3. SUPs are required for any use which has, or which can reasonably be expected to have, fifty (50) or more persons involved or for any use that could potentially have a detrimental effect on park property or other park users.~~
- ~~4.3.~~ The permittee or a permittee’s designated representative shall be in attendance at all times and have physical possession of the SUP or be able to produce the SUP at the request of any County staff and/or peace officer.
- ~~5.4.~~ All ordinance provisions shall remain in effect and will be enforced as though the same were inserted in said SUP.
- ~~6.5.~~ It shall be unlawful for a person to violate any provision of a SUP.

- ~~7.6.~~ Any SUP granted pursuant to this ordinance may be revoked upon the violation by the permittee, or associated individual(s), of any provision of the permit, any Minnesota State statute, any County ordinance, any County Park rule or regulation, or for other good cause.
- ~~8.7.~~ The permittee shall be liable for any loss or damage to County Park property or injury to any person by reason of the negligence of the permittee or associated individual(s).
- ~~9.8.~~ It shall be unlawful for any person to refuse to vacate the area designated as reserved by a SUP.

## Chapter 3 - Regulations of General Conduct

### Section 3.1 - Proper Attire/Indecent Exposure

To promote a positive experience for all park users, it shall be unlawful for any person to intentionally expose their own genitals, pubic area, buttocks, or female breast below the top of the areola (except while breastfeeding) with less than a fully opaque covering while in a County Park.

### Section 3.2 - Alcohol and Controlled Substance Use

Certain kinds of alcoholic beverages are permitted in designated areas at all Dakota County parks. No alcohol will be consumed on Dakota County park premises by any person under the legal age. Valid identification may be requested by Park Rangers or Park staff of any person(s) who appear to be underage at any time. All visitors and guests must have a valid ID if they plan to consume alcoholic beverages.

Beer, wine, ciders, flavored alcoholic beverages, and other single serving, prepackaged beverages are permitted in designated areas only.

It shall be unlawful, when in a County Park, for any person to:

1. Use, possess, consume, or sell any Alcoholic Beverages or Controlled Substances in violation of Minnesota Statutes.
2. Serve or sell Alcoholic Beverages without a Special Use Permit or concessionaire agreement.
3. Possess or consume single-serving Alcoholic Beverages outside of designated areas:
  - Reserved Campground or Camper Cabin sites;
  - Trailheads;
  - Swimming Beaches (no glass bottles);
  - Picnic Areas; or
  - Other areas expressly designated by the Park Director.
4. Possess or bring into a County Park alcoholic beverages in kegs or barrels or more than a single case of 24 prepackaged, single serving beverages without a Special Use Permit.
5. Use, manufacture, possess, sell, give away, barter, exchange, distribute, or otherwise transfer any Controlled Substance, except on a lawful prescription by a person licensed by law to prescribe and administer Controlled Substances, or as allowed by state statutes.
6. Be under the influence of a hazardous substance or drugs or alcohol to the point of intoxication, or loss of motor skills or consciousness, or other factors that may injure the party or adversely affect other park visitors.

Selling of alcoholic beverages requires a Special Use Permit, and sales must comply with liquor licensing regulations for the city in which the Park is located.

### **Section 3.3 - Smoking and Electronic Delivery Device Use**

For the health and enjoyment of all park users, smoking of any kind (including vaping) on County Park property and recreational facilities is prohibited, except in parking lots, on roadways, on individually rented campsites in County-owned or operated campgrounds, and for use of tobacco as a traditional Native American spiritual or cultural ceremony.

### **Section 3.4 - Gambling**

In accordance with Minn. Stat. ch. 609, it shall be unlawful for any person to gamble or participate in any game of chance for a consideration of items of value, excepting private social bets or chance drawings not incidental to organized, commercialized, or systematic gambling, except when authorized by Special Use Permit.

### **Section 3.5 - Nuisance/Private Property**

To promote a positive experience for all park users, it shall be unlawful, when in a County Park, for any person to:

1. Commit any act that constitutes a nuisance.
2. Disturb, harass, or interfere with a park visitor's property.
3. Place or park vehicles, equipment or property in a manner or location that interferes with traffic or other park visitor's enjoyment of the County Park or specific facility therein.
4. Distribute literature outside of Public Forum areas. Distribution of publications, including but not limited to newspapers, magazines, political literature, circulars, and pamphlets must be approved by the Park Director and are subject to a fee.
5. Dakota County Parks employees may place notices in non-public areas within Dakota County parks describing, e.g., items for sale, services offered, upcoming events or programs, provided that the posting or activity does not interfere with the performance of Dakota County Parks business and follows all department policies. Leave or store personal property in undesignated areas without a Special Use Permit for any reason other than a County-organized event, program, or activity approved by the Parks Director.

Law Enforcement shall have the authority to seize any unauthorized items collected from and being removed from the park.

### **Section 3.6 - Littering**

To support the County's commitment to environmental stewardship, it shall be unlawful for any person to:

1. Deposit, scatter, litter, or abandon on County Park property any bottles, cans, glass or broken glass, sewage, waste, refuse or other materials, except in receptacles provided for such purposes; or
2. Bring into a County park property any materials listed in Section 3.6, subdivision 1, or hazardous waste, yard waste, solid or liquid waste for the purpose of disposal in receptacles provided in the County Park or on any County Park Property.

### **Section 3.7 - Possession/Use of Firearms/Dangerous Weapons/Fireworks**

The possession of firearms in County parks is allowed, as permitted by Minnesota law, local ordinances, or by Special Use Permit. Archery bows are allowed by Special Use Permit and in a designated archery range only.

It shall be unlawful for any person to:

1. Possess a dangerous weapon other than a firearm or archery bow that is being possessed as allowed by Minnesota law, local ordinance, or Special Use Permit; or
2. Discharge or fire firearms or other dangerous weapons in or into County parks, except as expressly permitted by Minnesota law, local ordinances, or by Special Use Permit; or
3. Possess, set off, or attempt to set off or ignite any explosives, firecrackers, fireworks, smoke bombs, rockets, black powder guns or other pyrotechnics without a Special Use Permit.

### **Section 3.8 - Interference with County Employee or Volunteer Performance of Duty**

In support of the County's work, it shall be unlawful for any person to intentionally:

1. Impersonate any employee, volunteer, or contractor of Dakota County; or
2. Interfere with, obstruct, harass, or hinder any employee, volunteer, or contractor in the discharge of their duties.

### **Section 3.9 - Child Safety**

To protect Dakota County Parks' youngest visitors and participants, all children under the age of 10 must be accompanied and supervised by an Authorized Adult or other responsible caregiver when using Dakota County parks, facilities, and greenways.

### **Section 3.10 - Assembly**

A Special Use Permit may be issued for public assemblies involving fifty (50) or more people and in designated areas related to:

- Public meetings;
- Worship services;
- Entertainment;
- Parades;
- Ceremonies;
- Demonstrations; and
- Other assemblies related to First Amendment rights.

A Special Use Permit is required for all public assemblies. Public assemblies may not interfere with other park users, structures, or points of pedestrian egress and ingress and are subject to the terms and conditions outlined in the approved permit. Dakota County parks reserves the right to implement a sliding permit fee scale based on the expected number of people assembled/in attendance.

## Chapter 4 - General Parkland Operation Regulations

### Section 4.1 - Commercial Use

All permissible commercial use activities must be approved by a Special Use Permit (SUP). Each SUP will contain terms and conditions all permittees must adhere to for the permit to remain valid. The following commercial activities may be approved by a SUP:

- Photography;
- Filming;
- Using park space to instruct or convene a class or group;
- Product demonstrations;
- Sale, rental, or promotion of merchandise or service;
- Food and beverage sales; and
- Flying a drone.

A SUP may not inherently grant exclusive use of space. A SUP for a commercial use provides the permittee a license for the activity in the designated areas and is revocable at will. The permittee and participants must share the designated areas (unless otherwise stated) with other users and cannot block public access.

It shall be unlawful for any person to:

1. Use any County Park or park property for commercial purposes without a permit;
2. Solicit, sell, or otherwise peddle any goods, wares, merchandise, services, liquids, or edibles in a County Park except by authorized concession or written permission from the Park Director; or
3. Expose, distribute, or place any sign, advertisement, notice, poster, or display in a County Park without permission from the Park Director.

Low-Impact Filming and Photography activities (involving five people or fewer per event and using equipment that will be always carried) activities will not require a SUP, ~~but non-low-impact~~ All other filming and photography activities ~~may~~ require a permit to address their potential impacts on park resources and visitor activities.

Videographers, producers, directors, news, and other staff associated with filming are reminded that rules and regulations that apply to all park visitors, including park hours and closed areas, still apply to filming activities even if a SUP is not required.

Filming and Photography activities that do not meet the description of Low-Impact Filming and Photography require at least ten (10) days advance notice to Dakota County Parks. Dakota County Parks will determine whether the filming activities will require a SUP for filming. Based on the information provided, a Permit may be required to:

1. Maintain public health and safety;
2. Protect environmental or scenic values;
3. Protect natural or cultural resources;

4. Allow for equitable allocation or use of facilities; or
5. Avoid conflict among visitor use activities.

### **Section 4.2 - Noise/Amplification of Sound**

Amplification of noise/sound is permissible when meeting the following conditions or allowed by Special Use Permit:

1. The sound/noise may not create a nuisance;
2. The sound/noise occurs between 7:00 am–10:00 pm; and
3. The sound/noise is amplified in a designated area.

It shall be unlawful for any person to:

1. Install, use, operate, or permit the use or operation within the Park of any of the following devices: Radios, television sets, musical instruments, personal Bluetooth speakers, loudspeakers, phones, or other devices for the production or reproduction of sound in such a manner as to be disturbing to wildlife, interfere with use of the park by others, or disturb the residents of adjacent properties.
2. Willfully make or continue, or cause to be made or continued, any loud, unnecessary, or unusual noise which disturbs the peace and quiet within any park or which interferes with use of the park by others or disturbs the residents of adjacent properties.

The standards which shall be considered in determining whether a violation of the provisions of this section exists shall include, but not be limited to, the following: (1) level of the noise; (2) intensity of the noise; (3) whether the nature of the noise is usual or unusual; (4) level and intensity of the background noise, if any; (5) type of area within which the noise emanates; (6) the intensity of human use of the area during the time at which the noise emanates; (7) time of the day or night the noise occurs; (8) duration of the noise; and (9) whether the noise is recurrent, intermittent, or constant.

Interpretation of this criteria shall be made by Park Rangers or designated Park Staff, who shall have full authority to allow, deny, or control levels of sound of park users.

### **Section 4.3 - Fires**

Open fires are only allowed in designated campfire rings established by Dakota County Parks. Portable camp stoves are only allowed in uncovered outdoor areas and as operated per manufacturer's recommendations.

It shall be unlawful, when in a County Park, for any person to:

1. Start or maintain a fire, grill, or stove outside of a designated area equipped for that purpose;
2. Leave a fire, grill, or stove unattended or fail to fully extinguish a fire or stove;

3. Drop, throw, or otherwise leave unattended lighted matches, burning smoking products, or other burning or combustible material; or
4. Dispose of ashes or embers except in containers designated for that purpose.

Firewood must be approved by the Minnesota Department of Natural Resources.

#### **Section 4.4 - Aviation**

Aviation takeoffs or landings, including aircraft, hot air balloons, parachutes, hang gliders, or other flying apparatus, are only allowed in a Dakota County park with a Special Use Permit.

Unmanned Aerial Vehicles (UAVs or drones) may only be used in established designated areas.

#### **Section 4.5 - Amusement Contraptions**

To support the safety and enjoyment of all park users, it shall be unlawful for any person to bring in, set up, construct, manage, or operate any amusement or entertainment contraption, device, or gadget in a County Park without a Special Use Permit.

#### **Section 4.6 - Pets in Parks (excluding service animals)**

To support the safety and enjoyment of all park users, it shall be unlawful for any person owning or having control or custody of any pet to:

1. Bring a pet into or have a pet in a County Park without it being caged or under physical control on a static leash no more than six (6) feet in length, except in areas designated for off-leash;
2. Allow a pet to disturb, harass, or interfere with any park visitor, park visitor's property, park employee, park employee's property, or the employees or property of a contractor of the County, or to endanger the safety of park visitors, park employees, or employees of a contractor of the County;
3. Allow a pet to damage park property, resources, or facilities;
4. Tether a pet to a tree, plant, building or park equipment, or leave a pet unattended in a County Park;
5. Bring a pet into a County Park without cleaning up pet feces and disposing of the feces in a waste receptacle;
6. Lead or control a pet while on in-line skates, skateboard, skis, bicycle, or any other means except while on foot or using an assistive mobility device, unless authorized by permit in a County Park; or
7. Operate a cart, wagon, dog sled, or skijoring device pulled by a pet or other animal in a County Park outside of areas designated for this activity.

#### **Section 4.7 - Unlawful Occupancy**

To protect the public assets and to provide a safe environment, it shall be unlawful for any person to:

1. Enter in any way any building, installation, or area that may be under construction or locked or closed to public use;

2. Enter or be upon any building, installation, or area after the posted closing time or before the posted opening time, or contrary to posted notice in any County Park; or
3. Be inside a building or closed area and loiter, sleep, congregate, or enter for the purpose to engage in any criminal act in any building, installation, or areas not specifically designated for such use any time.

## Chapter 5 - Property, Structures, and Natural Resources Protection

### Section 5.1 - Destruction/Defacement of Park Property/Signs

To protect the public assets, it shall be unlawful for any person to:

1. Move or remove park furniture, amenities, and park property outside of the designated use area as defined; and/or use park furniture and amenities for a reason(s) other than the intended purpose(s) of the park furniture and/or amenity in an unsafe manner;
2. Intentionally deface, vandalize, tamper with, or otherwise cause destruction to park property; or
3. Intentionally deface, destroy, cover, damage, tamper with, or remove any placard, notice, or sign, or parts thereof, whether permanent or temporary, posted or exhibited by the Parks Department, without express permission of a Special Use Permit.

### Section 5.2 - Foraging and the Collection/Harvesting of Wildlife and Natural Resources

~~Foraging is allowed only for identified items in approved areas. The Parks Director shall will maintain a list of items for which foraging is permitted and shall designate the areas where foraging is allowed. No digging or excavating is allowed when foraging.~~

~~Foraging is allowed for identified items that are above ground and in designated areas per **Park Rules & Regulations**. No digging or excavating is allowed when foraging.~~

Special Use Permits are required to forage any item or in any area not ~~listed in the **Park Rules & Regulations**~~ designated by the Parks Director. It shall be unlawful for any person to forage or gather flora in any County Park except as permitted under this section 5.2.

### Section 5.3 Disturbance of Natural Resources

To protect the natural environment and support restoration activities, it shall be unlawful, when in a County Park, for any person to perform any of the following unless expressly provided in a Special Use Permit:

1. Remove, alter, injure, or destroy any tree, plant, or other vegetation, soil, mineral, or other natural resource, other than for foraging for designated items in designated areas;
2. Remove materials from, alter, or destroy an archeological site or resource or site of scientific significance or interest without a Special Use Permit, which may be issued to allow an approved archaeological dig. All approved archaeological digs must adhere to the [State of Minnesota Archaeological Survey Requirements](#);
3. Dig trenches, holes, or other excavations;

4. Divert, impound, or alter a watercourse; or
5. Introduce, transport, import, release, abandon, or dispose of any plant or animal, including fishing bait, except in receptacles approved for that purpose.

#### **Section 5.4 - Disturbance of Wildlife**

To protect wildlife and their habitat, it shall be unlawful, when in a County Park, for any person to:

1. Kill, trap, hunt, injure, pursue, feed, or in any manner disturb or cause to be disturbed any animals and/or species of wildlife, except fishing ~~or hunting~~ pursuant to State ~~game and~~ fish laws and Section 6.6 of this Ordinance, or hunting pursuant to State game laws with a permit during a County-sponsored hunt with a permit during a County-authorized hunting event; or
2. Intentionally remove, alter, injure, destroy, or otherwise disturb habitat used by any species, including but not limited to nests, dams, or burrows.

#### **Section 5.5 - Release of Harmful or Foreign Substances**

To support the County's commitment to environmental stewardship, it shall be unlawful for any person to:

1. Place any debris, pollutant, or other agent in or upon any County Park lands or body of water in or adjacent to a County Park or any tributary, stream, storm sewer, or drain flowing into such waters; or
2. Discharge wastewater or any other wastes in a County Park, except into designated containers, drains, or dumping stations.

#### **Section 5.6 - Interference of Park Property**

To protect the natural environment and support restoration activities, it shall be unlawful for any person to knowingly encroach on park property with such items as fences or gardens, or to disturb the natural landscape, vegetation, or structures on park property, or otherwise to use park property for private use. All setbacks and other local zoning regulations are in effect and apply against properties adjacent to a County Park as they would against property adjacent to private property.

## Chapter 6 - Recreation Activity Regulations

### Section 6.1 - Camping

Camping within Dakota County Park property is allowed in established camping areas and if proper registration has occurred.

It shall be unlawful, when in a County Park, for any person to:

1. Camp, dwell, or sleep overnight except in areas provided and designated for that purpose;
2. Occupy campsites or camper cabins in a park without a camping permit or payment of appropriate fees or otherwise violate provisions of the permit;
3. Camp overnight in a park if under 18 years of age unless accompanied by an authorized adult.

### Section 6.2 - Picnicking

Picnicking within Dakota County Park property is allowed.

It shall be unlawful, when in a County Park, for any person to:

1. Assume exclusive use of a reservation picnic site without a reservation permit;
2. Use a portion of a reservation picnic area without a reservation permit if the area is reserved by another group; or
3. Set up temporary shelters, tents, tarps, canopies, and other such devices larger than ~~twenty (20) square~~200 square -feet without authorization by ~~permit~~Special Use Permit.

### Section 6.3 - Swimming

Swimming within Dakota County Park property is allowed in established swimming areas.

It shall be unlawful, when in a County Park, for any person to:

1. Wade or swim except at ~~beaches waterfront areas~~ designated for such use and only at ~~such during posted~~ times ~~when an authorized lifeguard is on duty unless otherwise explicitly posted~~;
2. Allow a child wearing diapers to swim or wade in a swimming area without waterproof swim diaper or diaper cover; or
3. Take glass or breakable containers of any kind onto a designated beach, into the water itself, or on any lake.

Properly fitting U.S. Coast Guard-approved life jackets are allowed and encouraged for use. Inflatable (or foam) noodles, kickboards, and all coast guard approved flotation devices are allowed in designated swim areas; all other inflatables are prohibited, such as inner tubes, rafts, or loungers.

### Section 6.4 - Scuba Diving

For the safety and enjoyment of all park users, it shall be unlawful, when in a County Park, for any person to:

1. Scuba dive in violation of State or Federal Law, including Minn. Stat. § 86B.601;

2. Scuba dive in a designated swimming area;
3. Scuba dive within 100 feet of watercraft access point; or
4. Conduct scuba diving instruction without a ~~permit~~ Special Use Permit.

### **Section 6.5 - Boating**

Boating within Dakota County Park property is allowed in designated areas.

It shall be unlawful, when in a County Park, for any person to:

1. Launch or land a motorized watercraft except at locations and times designated for that purpose;
2. Leave unattended any boat or other watercraft except in park areas designated for that purpose;
3. Operate a watercraft in violation of State or Federal Law, including Minn. Stat. ch. 86B and Minn. Admin. R. 6110.1600–6110.2300;
4. Operate a watercraft within a designated swimming area or posted Lake Byllesby Dam warning area;
5. Tow a person on water skis, inner tube, or any other device or use a surfboard or kneeboard in a park designated swimming area or boat launching area or any other area closed to boating activities; or
6. Launch or remove any watercraft from County Park waters in violation of State or Federal Law, including Minn. Stat. ch. 84D.

### **Section 6.6 - Fishing**

Fishing within Dakota County Park property is allowed in designated areas.

It shall be unlawful, when in a County Park, for any person to:

1. Fish in violation of State or Federal Law, including Minn. Stat. ch. 97C;
2. Fish in an area designated as a “no fishing” area; or
3. Clean fish without disposing of the fish carcass in a waste receptacle.

### **Section 6.7 - Horseback Riding**

Horseback riding within Dakota County Park property is allowed during designated times and in designated areas.

It shall be unlawful, when in a County Park, for any person to:

1. Ride, lead, or allow a horse to be within a County Park except in designated riding areas and trails, at designated hours, and during the designated riding season which is set and posted by the Parks Department;
2. Ride a horse which cannot be held under such control that it may be reasonably turned or stopped; or

3. Ride a horse in such a manner to create a nuisance or to endanger the safety or property of any park visitor, park employee, the rider, or the horse.

### Section 6.8 - Bicycling

Bicycling within Dakota County Park property is allowed in designated areas.

It shall be unlawful, when in a County Park, for any person to:

1. Operate a bicycle except on designated ~~bikeways~~greenways, roadways, or trails, and except as close to the right-hand side thereof as conditions will permit; and, for designated mountain bike trails, except during the designated mountain biking seasons which are set and posted by the Parks Department;
2. Operate a bicycle carelessly or heedlessly in disregard of the rights of others, including at a speed faster than is reasonably safe or in any manner that endangers or is likely to endanger any property or any person, including the any park visitor, park employee, or the rider;
- ~~2. Operate a bicycle in such a manner so as to create a nuisance or to endanger the safety or property of any park visitor, park employee, or the rider;~~
- ~~3. Operate a bicycle at a speed faster than is reasonable and safe with regard to the safety of the operator the greenway or and other persons in the immediate area;~~
- ~~4.3.~~ Operate a bicycle in violation of Minn. Stat. ch. 169; or
4. Park a bicycle except at a bicycle rack when such a rack is provided; in instances where bicycle racks are not provided, bicycles are to be parked where they will not create hazards to the activities of other park visitors or disturb park activities.

See section 7.4 for additional information on Motorized Recreational Vehicles and Electric Powered Devices. ~~(e-bikes).~~

### Section 6.9 - Hiking and Snowshoeing

Hiking or snowshoeing in a County Park on trails is allowed, except on trails that are clearly designated for other uses or in areas closed to public use.

### Section 6.10 - Roller-Skating, In-Line Skating, and Skateboarding

Skating and Skateboarding within Dakota County Park property is allowed in designated areas.

It shall be unlawful, when in a County Park, for any person to:

1. Operate skates or a skateboard except on designated ~~bikeways~~greenways, roadways, or trails, and except as close to the right-hand side thereof as conditions will permit;
2. Operate skates or a skateboard in such a manner to create a nuisance or to endanger the safety or property of any park visitor, park employee, or the skater; or
3. Operate skates or a skateboard at a speed faster than is reasonable and safe with regard to the safety of the operator and other persons in the immediate area.

### Section 6.11 - Snowmobiling

For the safety and enjoyment of all park users and to protect natural resources, it shall be unlawful, when in a County Park, for any person to:

1. Operate a snowmobile within the Dakota County Park system, except where allowed in public right-of-way ~~or, on State designated snowmobile trails, or as~~ allowed by the Department of Natural Resources on public waters or designated access points;
2. Operate a snowmobile in excess of posted speed limits when present or at a rate of speed greater than reasonable or proper under prevailing conditions;
3. Operate a snowmobile in such a manner so as to create a nuisance or to endanger the safety or property of any park visitor, park employee, or the snowmobile rider;
4. Operate a snowmobile in violation of State or Federal law, including Minn. Stat. ch. 84 and Minn. Admin. R. 6100; or
5. Operate a snowmobile in violation of any posted trail sign.

### Section 6.12 - Cross-Country Skiing

Cross-Country Skiing within Dakota County Park property is allowed in designated areas.

It shall be unlawful, when in a County Park, for any person to:

1. Operate skis except on designated trails, and except as close to the right-hand side thereof as conditions will permit, and only with a permit during the designated cross-country skiing season which is set and posted by the Parks Department;
2. Operate skis in such a manner to create a nuisance or to endanger the safety or property of any park visitor, park employee, or the skier; or
3. Conduct a race or event on cross-country ski trails without a Special Use Permit.

### Section 6.13 - Other Winter Activities

For the safety and enjoyment of all park users and to protect natural resources, it shall be unlawful for any person to ice skate, cold water plunge (ice dip), ~~sled,~~ snowboard, ~~or~~ downhill ski in a County Park except at such times and in areas designated for that purpose.

### Section 6.14 - Games and Active Recreation Activities

Dakota County Parks encourages family, lawn, and/or "tailgate" games within the park system. However, various activities that involve objects used as projectiles must be stopped upon notification of Dakota County Staff or a member of Park Patrol.

~~Dakota County Parks reserves the right to publish rules and regulations associated with various recreation activities that are permissible only in specific locations or areas within a County Park.~~

### Section 6.15 - Hammocking, Slacklining, and Other Line-Related Activities

Hammocking, Slacklining, and other line-related activities are allowed on Dakota County Parks property in designated areas only.

All hammocks, slacklines, and other line-related activities must adhere to the following conditions:

1. The affixed point of a hammock and/or line must not exceed six (6) feet off the ground;
2. All hammocks and lines must be affixed to trees or designated hammocking posts/stations (not building structures or other park furniture, amenities, and facilities) at least twelve (12) inches in diameter;
3. All straps and lines must be at least one (1) inch in diameter;
4. No straps, lines, or hammocks can cross trails or pedestrian access points;
5. No straps, lines, or hammocks can be “stacked” on top of each other or create “wheel spokes”; and
6. No straps, lines, or hammocks can be left unattended at any point.

The Park Director reserves the right to close areas to hammocks, slacklines, and other line-related activities. County staff can have a user remove a strap, line, or hammock for any purpose.

### Section 6.16 - Metal Detecting

Metal detecting is allowed on Dakota County Parks property in designated areas and with a Special Use Permit.

All permissible metal detecting requires:

1. Digging no trenches, holes, or other excavations except on designated swimming beaches;
2. Refilling any hole that has been dug;
3. Remaining at least twenty (20) feet away from park users and animals/wildlife; and
4. Not entering areas closed to general visitor use OR metal detecting activities except as authorized pursuant to a Special Use Permit. ~~(per Special Use Permit).~~

Dakota County Parks reserves the right to publish rules and restrictions associated with various recreation activities that are permissible only in specific locations or areas within a County Park. Rules and restrictions will be posted on the Dakota County Parks website and in some cases, onsite at the park location.

## Chapter 7 - Motorized Vehicles, Traffic, and Parking Regulations

### Section 7.1 - Vehicle Operation

For the safety and enjoyment of all park users and to protect public assets, it shall be unlawful, when in a County Park, to:

1. Operate, park, or leave any vehicle except upon roadways, parking areas, or other designated locations;

2. Operate, park, or leave a vehicle in violation of posted regulations, State law, Minn. Stat. ch. 169, county or municipal traffic codes, or orders or directions of traffic officers or park employees authorized to direct traffic;
3. Operate a vehicle at speeds of more than 25 miles per hour, or more than posted speed limits; or
4. Operate a vehicle that emits excessive or unusual noise, noxious fumes, dense smoke, or other polluting matter.

### Section 7.2 - Parking Vehicles

To promote a positive experience for all park users, it shall be unlawful, when in a County Park, to:

1. Park or leave a vehicle, boat, or trailer standing except in a designated area and then only in a manner so as not to restrict normal traffic flow and not in violation of posted signs;
2. Park or leave a vehicle, boat, or trailer standing after posted closing hours without a valid camping permit or other permit;
3. Park or leave a vehicle, boat, or trailer without a disability parking placard in view in a designated parking space; or
4. Park or leave a vehicle without a boat trailer in a parking space designated for vehicles with boat trailers or to park or leave a vehicle with a boat trailer in an area not designated for boat trailer parking when such an area is provided.

Vehicles, boats, or trailers illegally parked, disabled, or abandoned may be towed away and impounded at the owner's expense.

### Section 7.3 - Motorized Vehicle Maintenance

For the safety and enjoyment of all park users and to protect natural resources, it shall be unlawful for any person to wash, grease, change the oil of, or perform other maintenance on any motorized vehicle in a County Park.

### Section 7.4 - ~~Motorized Recreational Vehicles~~ Electric Powered Devices and Motorized Recreational Vehicles

~~Electric Powered Devices (EPDs) are allowed in Dakota County Parks on Dakota County Park Greenways if they are operated in a safe manner in accordance with any State or Local laws. EPDs are not allowed on trails inside a County Park, with the exception of~~ Electric Powered Devices (EPDs) are allowed on Dakota County Park Greenways if they are operated in a safe manner in accordance with any State or Local laws. EPDs are not allowed on trails inside a County Park, with the exception of ~~Additionally, all ADA-approved mobility devices, can be used throughout the Dakota County Park system as needed.~~

~~Beyond ADA-approved mobility devices, the~~ The following EPDs are allowed on ~~all paved surfaces~~ greenways:

- ADA-approved electric mobility devices
- E-bikes (electric-assist/pedal-assist)
- Free-standing electric devices such as Segways, hover boards, stand-up scooters, skateboards, longboards
- Kid-~~Powered~~ powered electric ride-ons

- Electric Scooters/scooters

All accepted devices must:

1. Be powered by electricity/battery;
2. Operate an EPD carelessly or heedlessly in disregard of the rights of others, including at a speed faster than is reasonably safe or in any manner that endangers or is likely to endanger any property or any person, including the any park visitor, park employee, or the rider; Be operated in a safe manner, not exceeding speeds above 15 mph;
3. Operate an EPD in violation of Minn. Stat. ch. 169;
- ~~3.4.~~ Yield to non-motorized vehicles and devices; ~~and~~
5. Yield to pedestrians and slower users; and
- ~~4.6.~~ Always pass other users on the left, with an audible signal in advance of passing.-

Class 1 electric mountain bikes are allowed on designated mountain biking trails.

Motorized vehicles and uses not allowed on County Park Greenways and trails

- Golf carts/Go karts
- Motorized bicycles (e-motos)
- Motorized scooters with dual motors, gas motors, or wattage in excess of 1,000
- Motorized vehicles, such as all-terrain vehicles, off-highway motorcycles, or off-highway vehicles, except when specifically permitted.
- Any vehicle that is larger than half the width of the trail
- Modified e-bikes, such as a change to electric motor or the electric drive system, or the use of an application to increase or override the electric drive system, or through any other means that makes the device no longer meet the requirements or classification of an e-bike.

Animal-Powered Vehicles and Devices, such as skijoring and dogsledding, are allowed in designated areas. It is unlawful to be propelled by an animal on any trail unless the trail is designated for that use.

## Chapter 8 - Enforcement

### Section 8.1 - Park Patrol Authority/Authorized Agents

The following authority is permitted to enforce the ordinance:

1. Designated Park employees may enforce the provisions of this ordinance and ask the persons acting in violation of this ordinance to leave park property.
2. Law enforcement authorities where County Park property is situated shall have jurisdiction to patrol and enforce the Dakota County Park Ordinance on County Park property. They also shall have jurisdiction to enforce any violation of state law or local laws which shall occur on County Park property.
3. Failure to comply with State or local laws or County ordinance may also result in the loss of park or recreation facility use privileges and ejection from the park for at least 24 hours. Responding Park staff or law enforcement will exercise appropriate enforcement discretion as circumstances warrant. Repeat, ongoing, or more serious offenses may result in being trespassed from County Park property.

### Section 8.2 - Penalties

Violations of the provisions of this ordinance or failure to comply with any of its requirements shall be punishable pursuant to Minn. Stat. § 398.34.

## Chapter 9 - Miscellaneous

### Section 9.1 - Exemptions

All park employees, contractors, volunteers, emergency, and enforcement personnel, while acting in the performance of their assigned duties, may be deemed exempt from the provisions of this ordinance, except when it is a violation of state or federal law.

### Section 9.2 - Repeal

All ordinances pertaining to the regulation of Dakota County Parks enacted prior to this ordinance are hereby repealed.

### Section 9.3 - Enactment

This ordinance shall be in full force and effect from and after its passage and publication according to law.

### Section 9.4 - Notification

It shall be the responsibility of Dakota County to provide for adequate notification of the public, which shall include placement of a sign at each public watercraft access outlining essential elements of the ordinance, as well as the placement of necessary buoys and signs.

### Section 9.5 - Severability

The provisions of this ordinance shall be separable and the invalidity of any section, paragraph, subparagraph, subdivision, or other part thereof shall not make void, impair, invalidate, or affect the remainder hereof.

### Section 9.6 - Amendment

This ordinance may be amended from time to time by the Dakota County Board of Commissioners and such amendment may be shown by either marking the section amended, attaching the amendment to this ordinance, or reprinting the ordinance publication.

## Chapter 10 - Effective Date

### To BE UPDATED AFTER PUBLIC HEARING

This ordinance shall be effective upon passage and publication by the Dakota County Board of Commissioners.

Passed by the Board of Commissioners on this \_\_\_\_ day of \_\_\_\_ ~~2023~~.

ATTEST: COUNTY OF DAKOTA, STATE OF MINNESOTA

\_\_\_\_\_

Jeni Reynolds  
Clerk to the Board

Date:

\_\_\_\_\_

~~Liz Workman~~ Laurie Halverson, Chair  
Dakota County Board of Commissioners

Date:

Approved as to Form and Execution

\_\_\_\_\_

~~Dain Olson~~  
Assistant County Attorney

Date:



# **Park Ordinance 107 2026 Update for Proposed Amendments**

**Physical Development Committee**

June 16, 2026

Niki Geisler, Parks Director  
Parks Department

## Park Ordinance Updated in 2023

- Modernized
- Emphasized “allowed” vs “unlawful” activities
- Addressed enforcement challenges

## 3 Years- Recorded Challenges and Areas of Confusion

- Consulted with other agencies
- Discussed with Sherriff’s Office
- Discussed with County Attorney’s Office

- Correct and clarify language
- Add detail to select activities
- Make recommended changes to accommodate real life application

# Language Clarification



---

Greenways and Trails

---

Conservation Areas

---

Special Use Permits

---

Commercial Photography

---

Foraging

---

State language

---

Winter Activities

---

Waterfront Areas

---

Posting of Additional Rules and Restrictions

## **Disturbance of Wildlife**

- To protect wildlife and their habitat, it shall be unlawful, when in a County Park, for any person to:
  1. Kill, trap, hunt, injure, pursue, feed, or in any manner disturb or cause to be disturbed any animals and/or species of wildlife, except fishing ~~or hunting~~ pursuant to State game and fish laws and Section 6.6 of this Ordinance, or hunting pursuant to State game laws with a permit during a ~~County-sponsored hunt~~ County-authorized hunting event; or

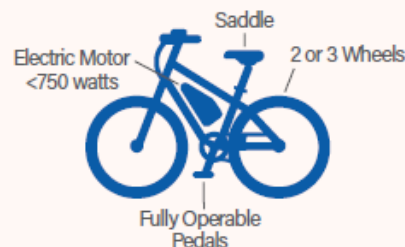
# Speed Limit Change

- Metropolitan Council Regional Park and Trails Implementing Agency and County and City Regional Parks and Trails staff developed Speed and E-Bike Regulation Best Practice in 2026.
  - In-lieu of a speed limits, language recommendation is *“must operate all bicycles in a safe manner and cannot operate speeds faster than are reasonably safe with regard to the operator, trail conditions, and other trail users”*
    - *Difficulty of enforcing speed limits and speed limits do not apply well in all areas (dense park vs long linear segments)*
    - *Not all e-bikes, or bikes generally, have speedometers*
    - *Variation of trail types and conditions within the system may dictate different speeds*
    - *Using etiquette requirements instead of a general or blanket trail speed limit*

## ✓ Met Council Recommendation

An e-bike is a bicycle with two or three wheels, a saddle, and fully operable human-propelled pedals. E-bikes are defined by class (1, 2, and 3) and have an electric motor less than 750 watts.

[\(Minnesota Statutes 169.011 Definitions, Subdivision 27\)](#)



	Class 1/2/3 E-Bike	E-Moto
Operable Pedals	Required	Not required (often fake)
Motor Power	750W	Often 1,000W-6,000W+
Top Speed	20-28 mph	30-65+ mph
Throttle	Class 2 only (20 mph)	Usually throttle-only
Licensing/Registration	No	Required (in most states)

# Speed Limit Change



- Current State of MN law is 28 mph for e-bikes, 20 for e-motos
- Current Dakota County ordinance requires a maximum speed of 15 mph.
- Sherriff's Office recommendation is to remove speed limit from Dakota County Park Ordinance 107 and rely on State and Local laws
- Proposed amendment states it shall be unlawful to "Operate a bicycle carelessly or heedlessly in disregard of the rights of others, including at a speed faster than is reasonably safe or in any manner that endangers or is likely to endanger any property or any person, including the any park visitor, park employee, or the rider."
- Ordinance also states that is shall be unlawful to "Operate a bicycle in violation of Minn. Stat. ch. 169"

# Electric Powered Devices (EPDs)



Electric Powered Devices (EPDs) are allowed in ~~Dakota County Parks~~ on Dakota County Park Greenways if they are operated in a safe manner in accordance with any State or Local laws. EPDs are not allowed on trails inside a County Park, with the exception of ~~Additionally, all ADA-approved mobility devices. can be used throughout the Dakota County Park system as needed.~~

~~Beyond ADA-approved mobility devices, the~~ The following EPDs are allowed on ~~all paved surfaces~~ greenways:

- ADA-approved electric mobility devices
- E-bikes (electric-assist/pedal-assist)
- Free-standing electric devices such as Segways, hover boards, stand-up scooters, skateboards, longboards
- Kid-Powered powered electric rRide-ons
- Electric Scooters scooters

# Electric Powered Devices (EPDs)



All accepted devices must:

1. Be powered by electricity/battery;
2. Operate a bicycle carelessly or heedlessly in disregard of the rights of others, including at a speed faster than is reasonably safe or in any manner that endangers or is likely to endanger any property or any person, including the any park visitor, park employee, or the rider. Be operated in a safe manner, not exceeding speeds above 15 mph;
3. Operate an EPD in violation of Minn. Stat. ch. 169
4. Yield to non-motorized vehicles and devices; and
5. Yield to pedestrians and slower users; and
6. Always pass other users on the left, with an audible signal in advance of passing.

Class 1 electric mountain bikes are allowed on designated mountain biking trails.

# Motorized Recreational Vehicles



## Motorized vehicles and uses not allowed on County Park Greenways and trails

- Golf carts/Go karts
- Motorized bicycles (e-motos)
- Motorized scooters with dual motors, gas motors, or wattage in excess of 1,000
- Motorized vehicles, such as all-terrain vehicles, off-highway motorcycles, or off-highway vehicles, except when specifically permitted.
- Any vehicle that is larger than half the width of the trail
- Modified e-bikes, such as a change to electric motor or the electric drive system, or the use of an application to increase or override the electric drive system, or through any other means that makes the device no longer meet the requirements or classification of an e-bike.

# Lakeville Example

## RIDE SMART, RIDE SAFE

MINNESOTA STATUTES	ELECTRIC ASSISTED BIKE	MOTORIZED BICYCLE	ELECTRIC SCOOTER	OFF-HIGHWAY MOTORCYCLE
HOW FAST CAN I GO ON TRAILS?	15 mph MAX Unless Posted	15 mph MAX Unless Posted	15 mph MAX Unless Posted	X
DO I NEED A DRIVER'S LICENSE?	NO	YES- Or Permit	NO	YES
WHAT IS THE AGE TO OPERATE?	15	16	12	16
DO I NEED TO WEAR A HELMET?	Recommended	REQ - If Under 18	REQ - If Under 18	REQ - If Under 18
CAN I HAVE A PASSENGER?	Not Unless It's Meant to Carry	NO	NO	NO
DO I NEED A LICENSE PLATE?	NO	NO	NO	YES
CAN I RIDE ON THE TRAILS?	YES	NO	YES	NO
CAN I RIDE IN VEHICLE LANES?	YES, Only Far Right	YES, Only Far Right	YES, Only Far Right	NO
CAN I RIDE ON SIDEWALKS?	NO	NO	NO	NO
ARE THERE ENGINE RESTRICTIONS?	Power Output of <750 Watts	Power Output of <1500 Watts	Power Output of <750 Watts	Power Output of <1500 Watts
DO I NEED LIGHTS ON FRONT & BACK?	Yes, a WHITE light in front & a RED light in rear are required and need to be visibly ON when riding during sunset to sunrise.			

# Next Steps

- Discussion and Direction: June 16, 2026
- Schedule Public Hearing: July 7, 2026
- Public Hearing and Adoption: August 4, 2026

QUESTIONS?



# Physical Development Committee of the Whole

## Request for Board Action

---

**Item Number:** DC-5695

**Agenda #:** 8.1

**Meeting Date:** 6/16/2026

---

Adjournment