

# BUILDING A HEALTHIER DAKOTA COUNTY

Progress Report, February 2022

## Dakota County SHIP Profile 2019 - 2021

- 440,964 residents
- \$1,565,718 awarded by the Minnesota Department of Health
- \$629,663 distributed to community partners
- \$3,909,565 leveraged in additional grant funds for community partners
- 10<sup>th</sup> year as SHIP grantee

The Statewide Health Improvement Partnership (SHIP) helps build thriving communities by implementing community-driven solutions for all people in Minnesota to live longer, healthier lives. Chronic conditions are major drivers of decreased quality of life, premature death, health inequities and healthcare costs in Dakota County. In fact, ninety percent of the nation's health care costs are for people with chronic conditions, and the majority of those costs are preventable<sup>1</sup>.

SHIP's unique, locally-based structure has allowed it to pivot throughout the pandemic to help communities continue creating opportunities for residents to be physically active, access healthy food, reduce commercial tobacco use and achieve well-being. In doing so, SHIP is protecting the health of current Dakota County residents while promoting the health of future generations.

## Health Equity - Supporting Opportunities for ALL to be Healthy

SHIP funds are being used with a focus on health equity. This means ensuring that all residents have the opportunities they need to realize their full health potential, regardless of structures or systems of society that unfairly benefit one population over another. This is reflected across strategies:

### SCHOOLS

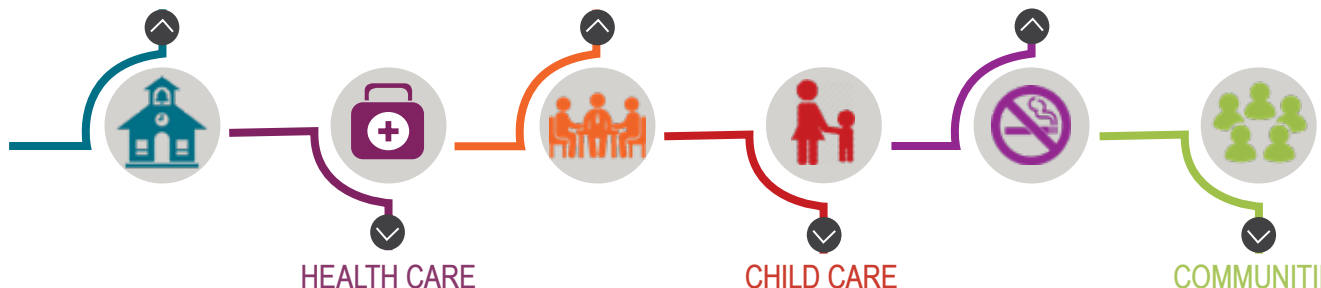
9 school districts implemented sustainable wellness efforts; partnered with cultural liaisons & family advocates to advance equity

### WORKSITES

Partnered with 18 worksites with fewer resources to support employees' physical and mental health and well-being

### TOBACCO-FREE LIVING

Supported commercial tobacco prevention efforts through policy, systems and environmental changes that lead with health equity



### HEALTH CARE

Implemented a "Food Rx™" program linking food insecure patients to sustainable resources at local health clinics

### CHILD CARE

Connected Latino 'Family, Friend and Neighbor' childcare providers to professional development opportunities to support a healthy start for the children in their care

### COMMUNITIES

Assisted 4 food shelves and 9 Farmer's Markets in expanding their ability to reach more individuals while operating safely during COVID-19

