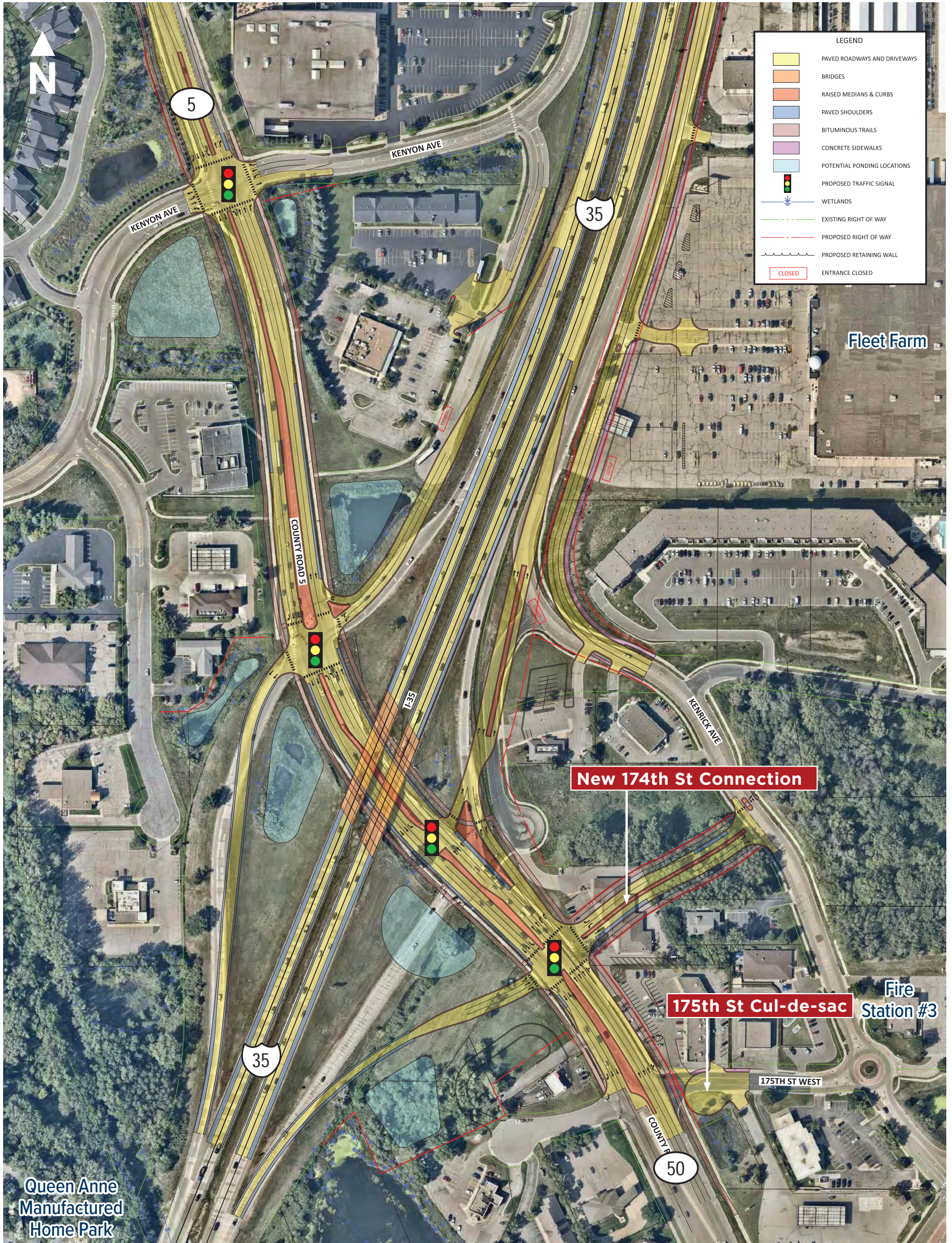


Modernized Diamond



- Intersections with signals for all travelers
- New 174th Street connection
- Cul-de-sac on 175th Street



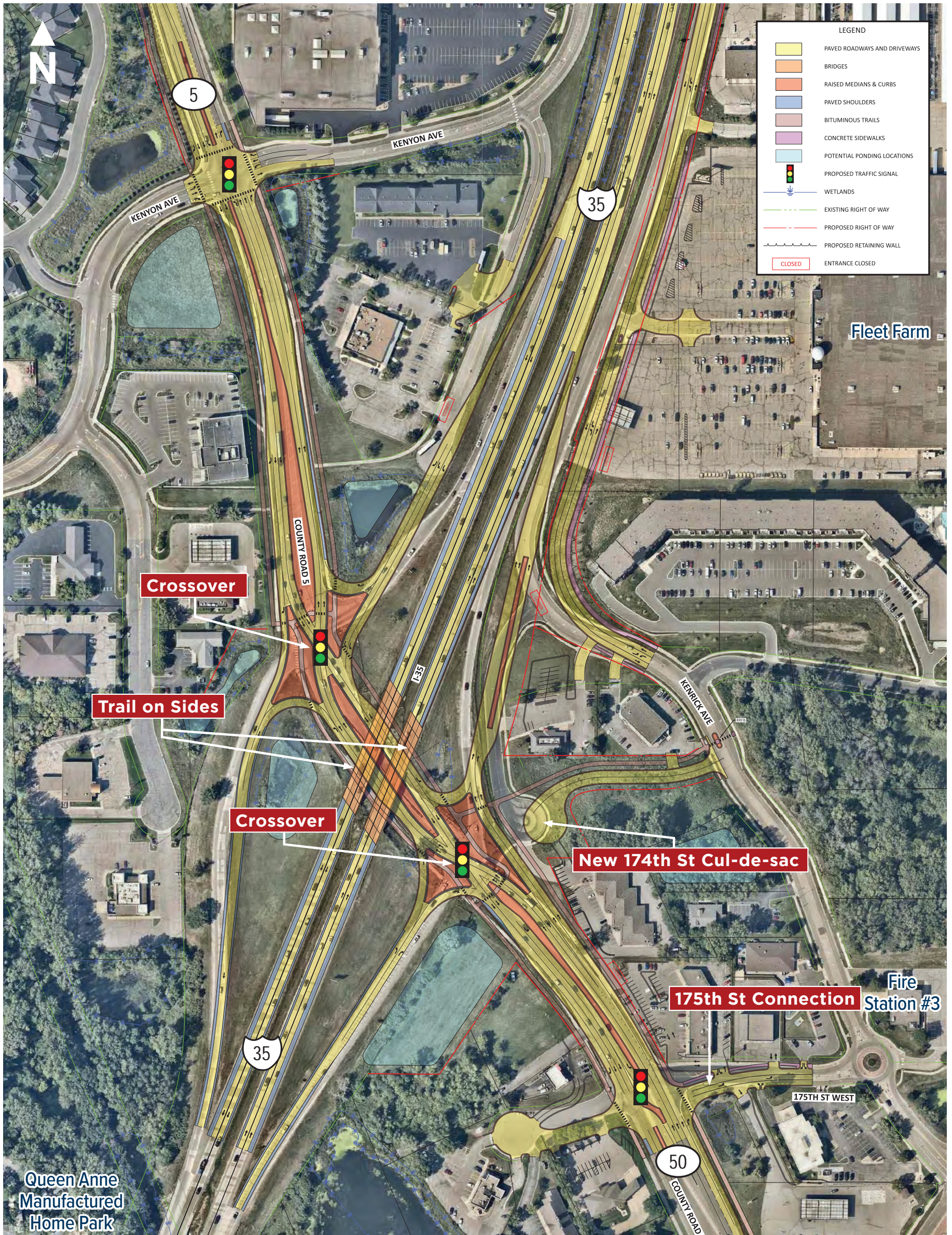
Business parking and access revisions are conceptual

County Road 50/County Road 5 Interchange at Interstate 35, Lakeville

Diverging Diamond

(Option with Trail on Sides)

- Intersections and signals, including a crossover design, which directs all traffic to cross over to the left-hand side of the roadway to facilitate unopposed left-turn movements
- 175th Street connection with signal added



Business parking and access revisions are conceptual

County Road 50/County Road 5 Interchange at Interstate 35, Lakeville