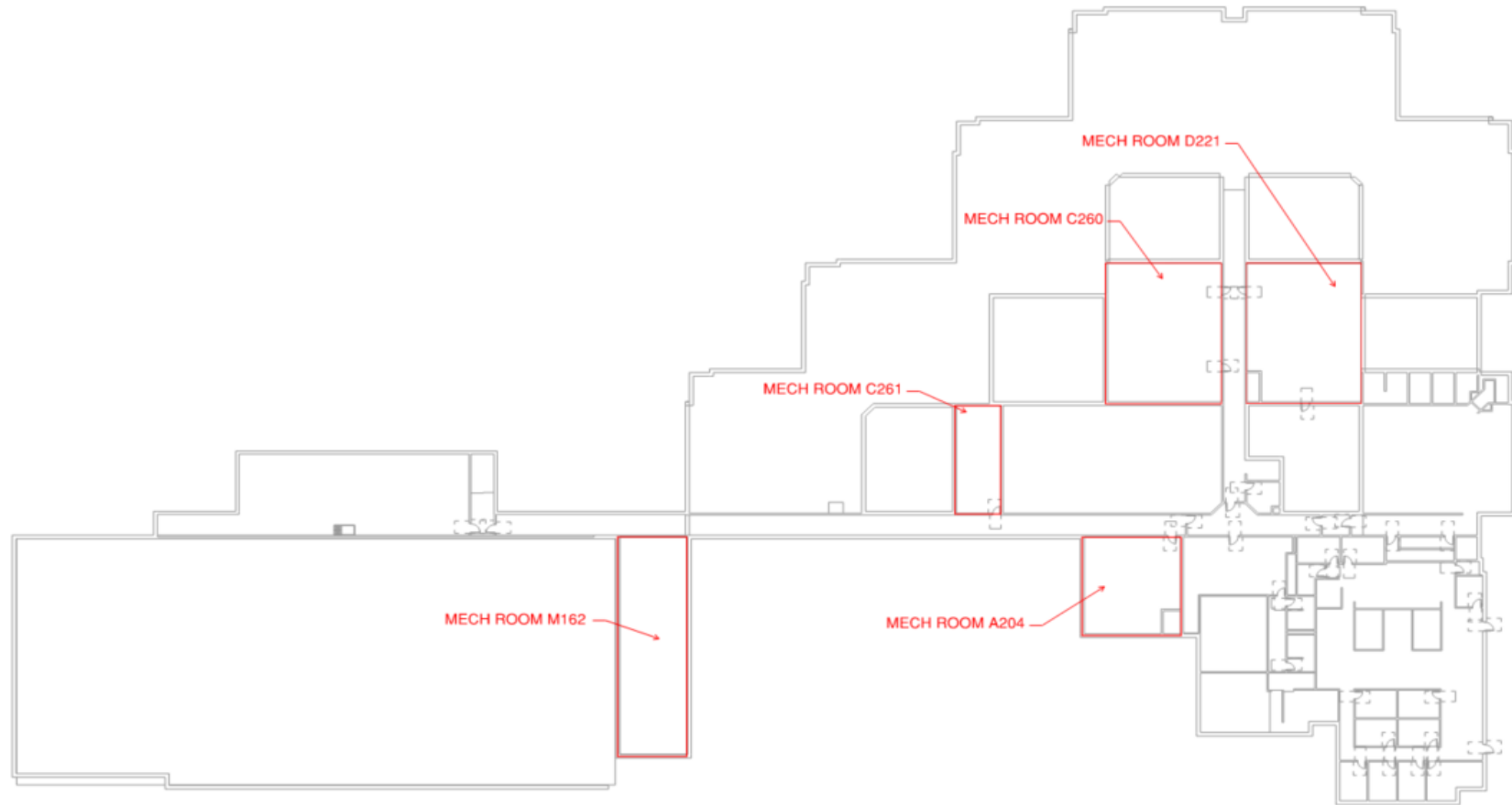
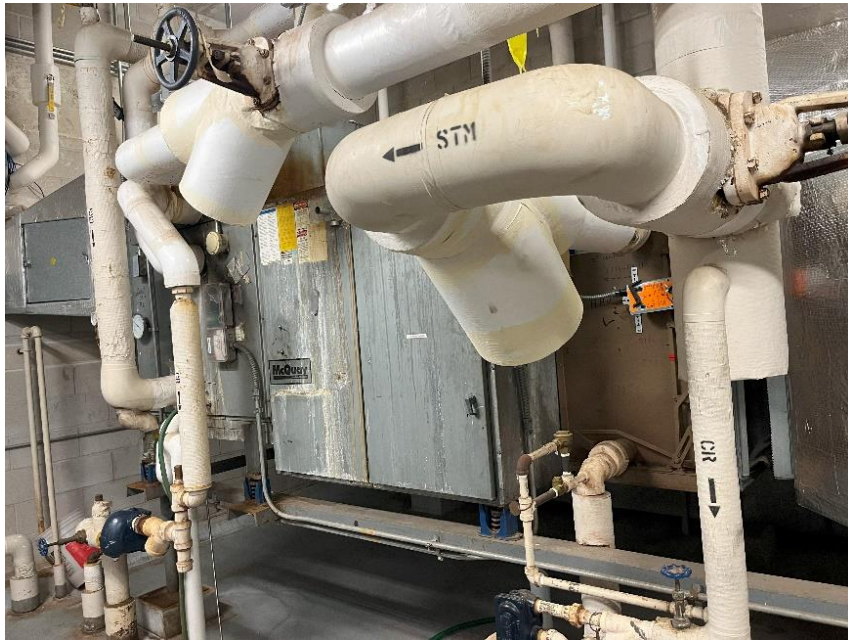


LEC Center Boiler and Chiller Replacement Schematic Design

Attachment: Schematic Design



Law Enforcement Center – Upper Level



Air Handlers to Be Replaced





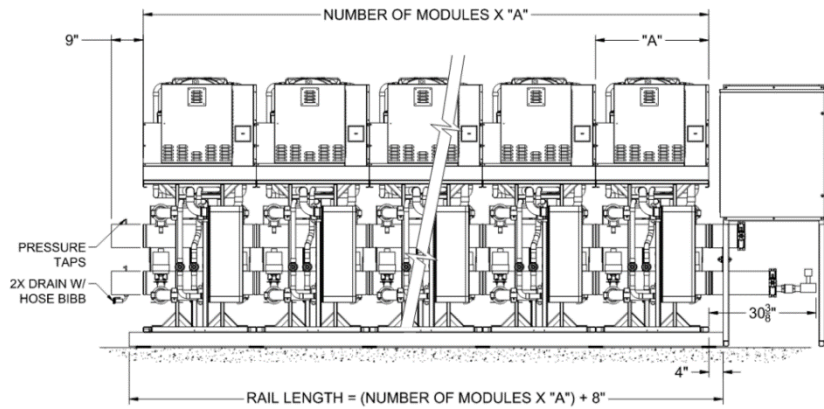
Boilers to be replaced



One of two new boilers



Chillers to be replaced



One of two new modular chillers



Typical electrical equipment to be modified

This project will:

- 1. Replace equipment and piping which is at end of life.**
- 2. Increase overall efficiencies with modern, modular equipment.**
- 3. Increase reliability with redundant equipment configurations.**
- 4. Convert steam heating system to hot water for better control and less staff involvement.**
- 5. All new systems will be controlled by the building automation system.**