



Seiberlich Family Foundation Donation



Dan Bianconi
Chief Deputy
Dakota County Board of Commissioners
Request for Board Action
February 4, 2025



About the Seiberlich Family Foundation



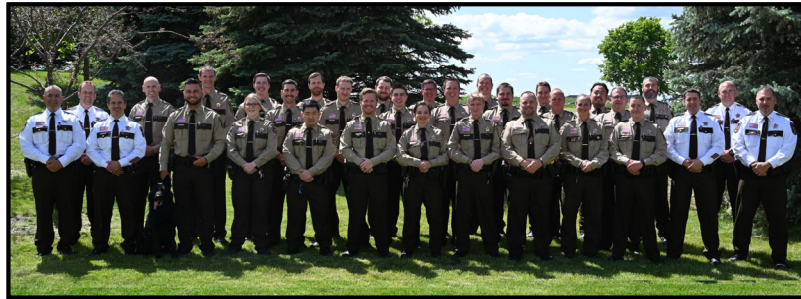
- The Seiberlich Family Foundation is a private 501(C)(3) foundation based in Stillwater, MN
- Established in 1996, with a long history of making charitable contributions
- Previously funded the purchase of a drug detection K9 with the Dakota County Drug Task Force



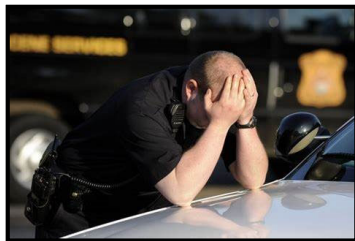
Seiberlich Family Foundation Donation



The Seiberlich Family Foundation graciously donated \$34,000 to the Sheriff's Office to be used toward supporting employee wellness initiatives.



Physical and Mental Impact of Law Enforcement



Health Disparities in Law Enforcement: Comparisons to the U.S. General Population

Onset of heart disease 69% higher than general population

Life expectancy 10 years less than general population

1 in 5 suffer from Post Traumatic Stress Disorder

25% struggle with alcohol addiction (coping mechanism)

54% higher suicide rate

Current Sheriff's Office Wellness Support Initiatives *Dakota* COUNTY



- Annual biometrics screening
- Fitness for duty program
- Rally fitness and nutritional challenges
- Sigma Tactical cardiovascular health screening (2024)
- Annual psychologist visit
- Peer Support Team
- Critical incident debriefs
- Early Intervention - Guardian Tracking Software
- Office Chaplain
- Wills For Heroes

Impact of Wellness Programs



Attract Top Talent: Agencies that emphasize wellness, including mental health resources, physical fitness programs, and work-life balance, are more appealing to prospective candidates.

Retain Employees: Candidates are likelier to join and stay with an agency that values an employee's well-being. This reduces turnover and improves morale.

Reduce Burnout: By promoting wellness programs, agencies can instill resiliency where officers remain physically, mentally, and spiritually fit for longer careers and lives after retirement.

Engagement and Performance: Enhance productivity and reduce stress which can negatively impact decision making.

Request to accept the donation



Focusing on and supporting the wellness of staff helps us maintain an effective, healthy, compassionate workforce that best serves our community.

This generous donation will supplement existing and new employee wellness efforts.

