

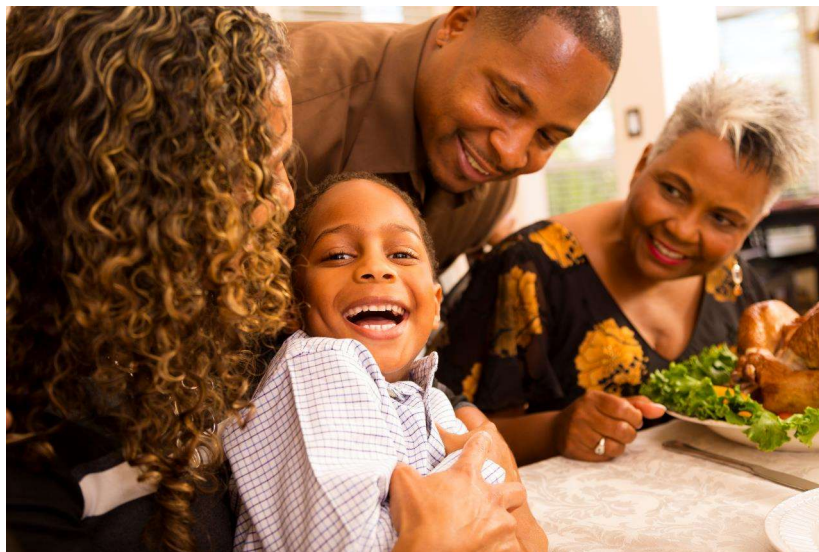


Child Abuse Prevention Month April 2025

Nikki Conway, Children and Family Services Director
Lawrence Dickens, Children and Family Services
Deputy Director

1

National Child Abuse Prevention Month



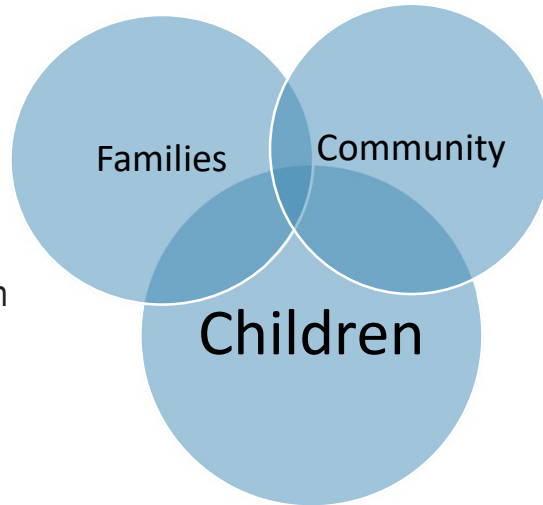
2

Why is this important?



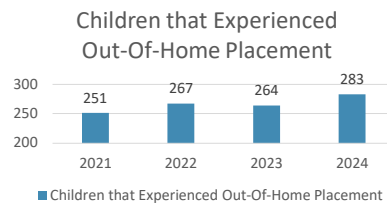
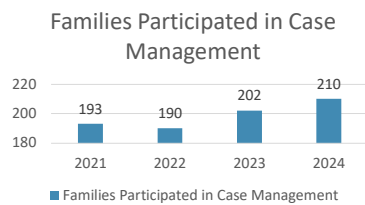
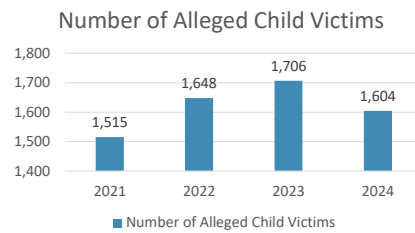
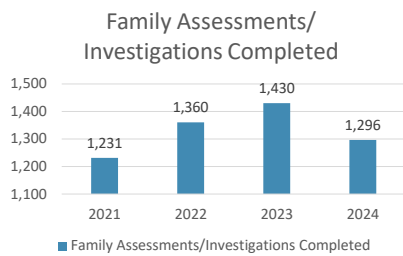
Thriving people

Dakota County creates access to opportunities, cares for vulnerable people, and fosters community safety, health and well-being.



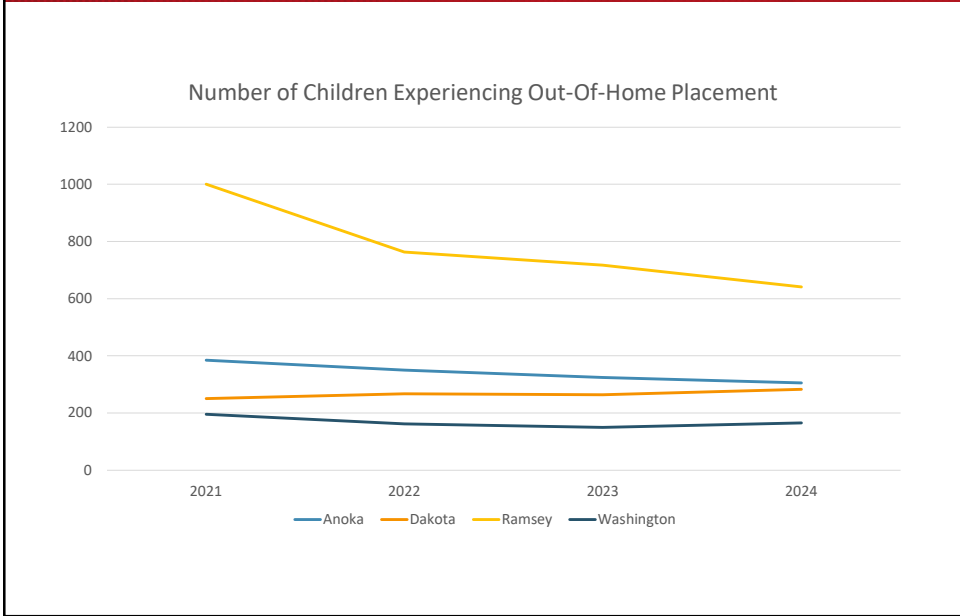
3

Child Protection in Dakota County



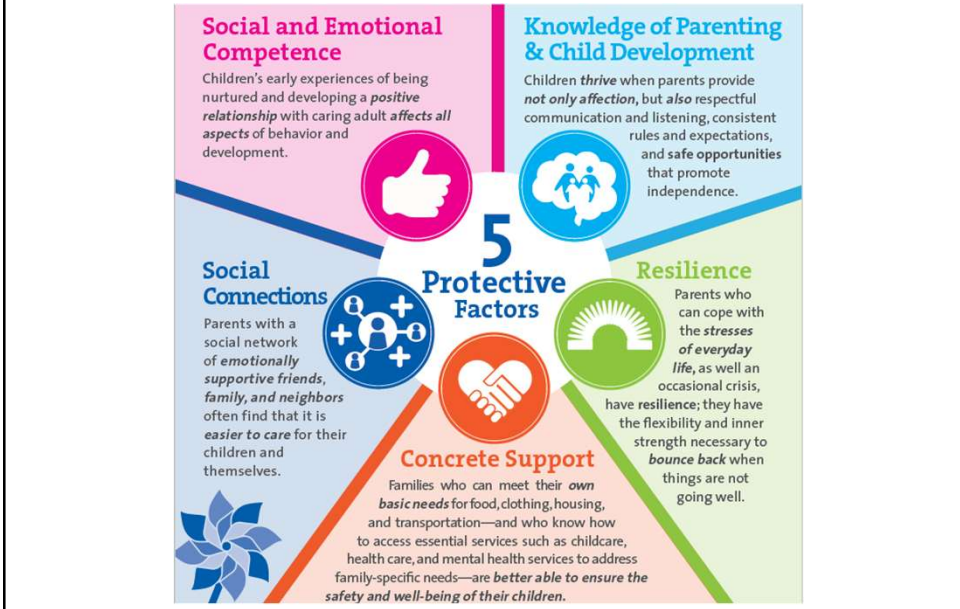
4

OHP Comparison by County



5

Five Protective Factors



6

Mandated Reporter Training



- Offered to wide range of community partners who work with children and families
- Includes:
 - Definitions of neglect and abuse related to child maltreatment
 - Legal requirements for mandated reporters
 - Process of making a child protection report and what happens after report is made
 - Resources

7

Prevention Programming Spotlight



Parent Support Outreach Program (PSOP)

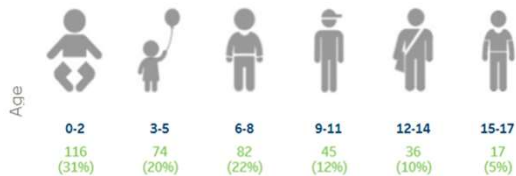
502 children in 222 families experienced PSOP

Per 1,000 rate of children by agency
Dakota: 4.71



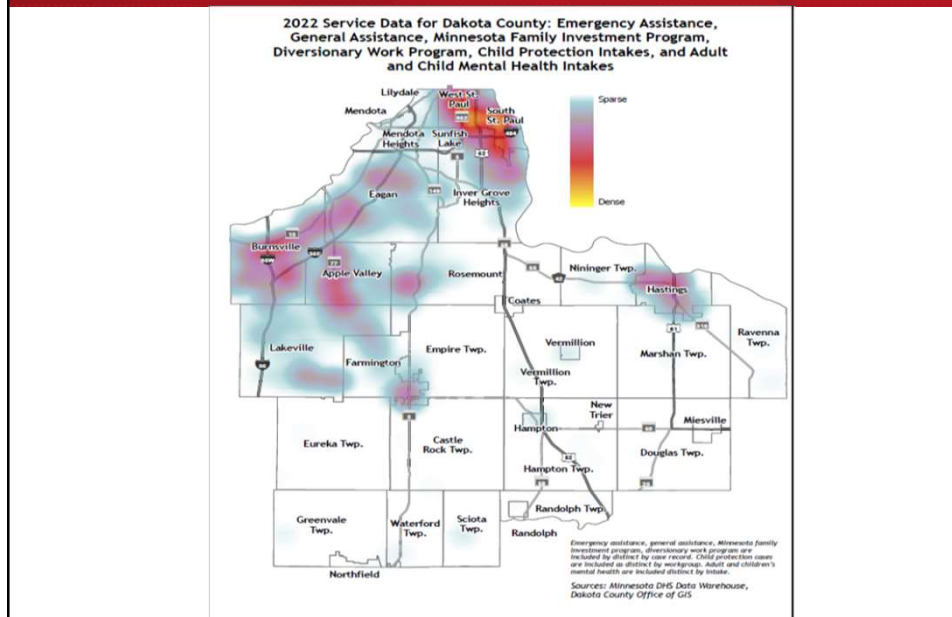
Child demographics

| Race/Ethnicity | Count (Percentage) | Rate per 1,000 |
|---------------------------------|--------------------|----------------|
| African American / Black | 114 (22.7%) | 7.2 per 1,000 |
| American Indian / Alaska Native | 15 (3.0%) | 12.4 per 1,000 |
| Asian / Pacific Islander | 9 (1.8%) | 1.2 per 1,000 |
| Two or more races | 72 (14.3%) | 8.8 per 1,000 |
| Unknown / declined | 142 (28.3%) | |
| White | 150 (29.9%) | 1.8 per 1,000 |
| Hispanic / Latinx (any race) | 82 (16.3%) | 5.4 per 1,000 |



8

Partner/Collaboration Spotlight



9

Community Resource Center



One Stop Shop

- Community Goal: to promote family well-being and prevent involvement in child protection and other crisis services
- Work started in 2022
- Includes multiple community organizations and partners

10

Racial Disparities in Out of Home Placement



Race / ethnicity breakdown with rates per 1,000 children

Data Point: (8) Number of Children Experiencing Out-of-home Care
Agency Selection: **Dakota**



Choose agency
Dakota

(8) Number of Children Experienc...

| | 2021 | | 2022 | | 2023 | | 2024 | | | | | |
|---------------------------------|-----------------------|----------------|-----------------------|----------------|-----------------------|----------------|-----------------------|----------------|------|-----|---------|------|
| | Population # estimate | Rate per 1,000 | Population # estimate | Rate per 1,000 | Population # estimate | Rate per 1,000 | Population # estimate | Rate per 1,000 | | | | |
| All groups | 243 | 106,950 | 2.3 | 271 | 106,387 | 2.5 | 272 | 106,392 | 2.6 | 298 | 106,392 | 2.8 |
| African American / Black | 46 | 13,908 | 3.3 | 63 | 14,816 | 4.3 | 64 | 15,759 | 4.1 | 68 | 15,759 | 4.3 |
| American Indian / Alaska Native | * | 1,113 | | * | 1,169 | | * | 1,213 | | * | 1,213 | |
| Asian / Pacific Islander | * | 7,110 | | * | 7,182 | | * | 7,220 | | * | 7,220 | |
| Hispanic / Latinx (any race) | 38 | 14,721 | 2.6 | 34 | 14,971 | 2.3 | 31 | 15,296 | 2.0 | 31 | 15,296 | 2.0 |
| Two or more races | 83 | 8,035 | 10.3 | 83 | 8,087 | 10.3 | 87 | 8,164 | 10.7 | 92 | 8,164 | 11.3 |
| White | 89 | 86,381 | 1.0 | 95 | 84,826 | 1.1 | 80 | 83,862 | 1.0 | 67 | 83,862 | 0.8 |

11

Community Engagement Spotlight



- **Eliminating Racial Disparities in Out-of-Home Placement**
 - Engaged parents with past involvement in child protective services in Dakota County
 - Co-design work to inform system and practice change
 - Recommendations include emphasis on prevention and resources

12

