



Staffing of the Dakota County Jail Integrative Health Unit



Sheriff Joe Leko
June 25, 2024

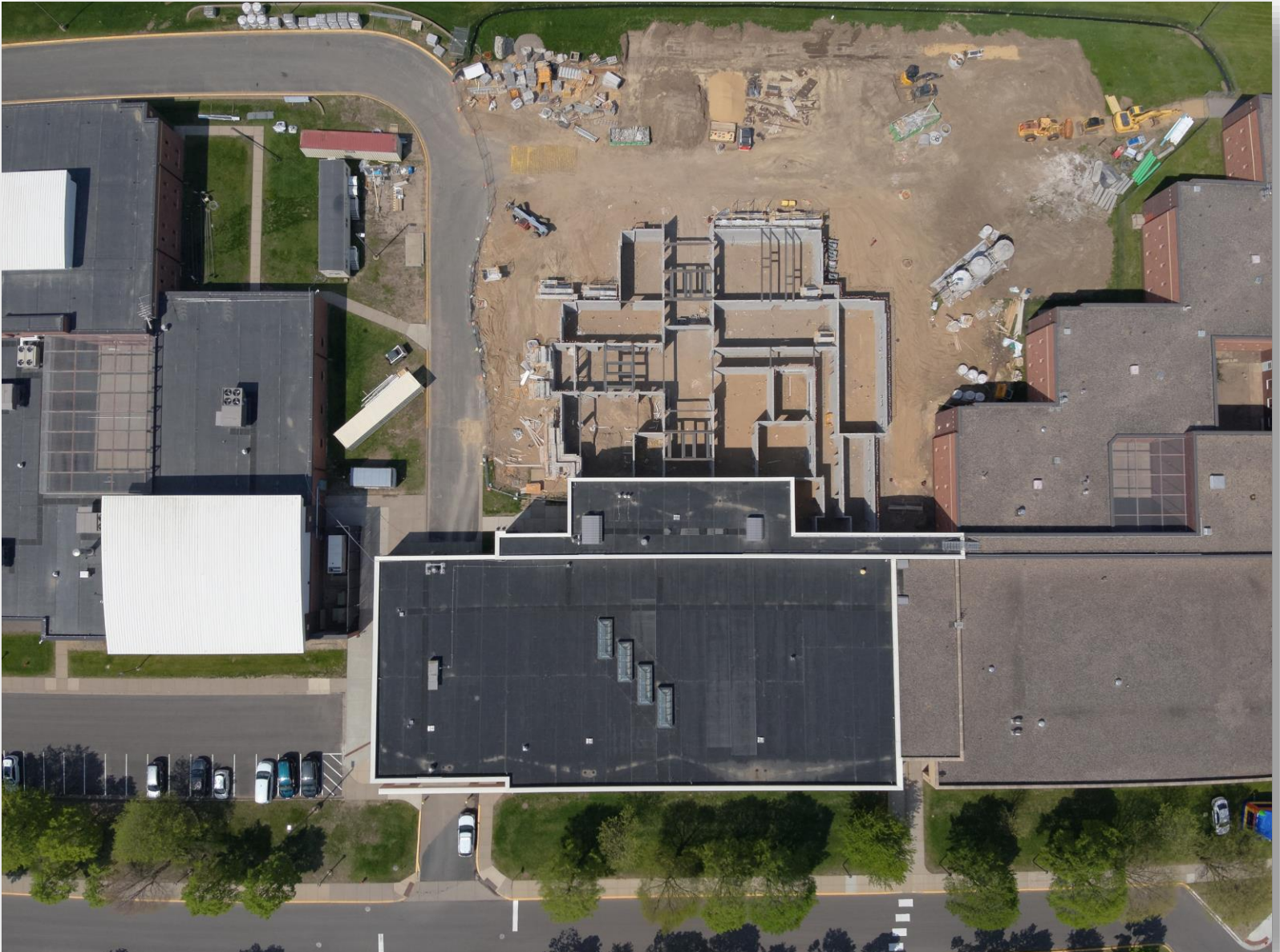
Background of the Integrative Health Unit



- In 2021, due to increasing pressures, the Sheriff's Office requested the Office of Planning & Analysis to study a proposed dedicated jail unit to house those who may be vulnerable in the general jail population, as well as those who have medical, mental health, or substance use needs.
- OPA confirmed the need for a space to provide specialized care, a 28-bed Integrative Health Unit.
- County Board of Commissioner's approved the addition of the \$12M Integrative Health Unit using Capital Improvement Project funding.
- These additional beds will be filled with existing Dakota County Jail detainees that mee the need requirements, not intended to house detainees form other counties.
- Construction began in the fall of 2023 with anticipated completion being the first quarter of 2025.



Image 8 – Exterior Rendering





Staffing of the Integrative Health Unit



The Integrative Health Unit will require an additional 12 correctional deputies to provide security and care per Minnesota Department of Corrections and Dakota County OPA's staffing study.

Original staffing plan

12 Correctional Deputies

Total - \$1,237,662 annually

Alternative staffing plan to backfill duties currently performed by correctional deputies

11 control room and fingerprinting staff - \$1,043,273 annually

1 Correctional Deputy - \$103,139 annually

Total - \$1,146,412 annually

➤ \$91,250 annual savings with alternative staffing proposal

Staffing Request and Fiscal Impact



Requesting the addition of 11.0 FTE grade 105 positions to fill control room and fingerprinting duties and; 1.0 FTE grade 106 position to serve as a Correctional Deputy

- Begin posting, hiring and training process prior to unit completion.
4-6 months to post, hire, and fully train new staff
- Positions hired in 2024 will be covered by 2024 salary savings
- Ongoing funding in 2025 will be in the Sheriff's 2025 requested budget

Questions and Discussion

