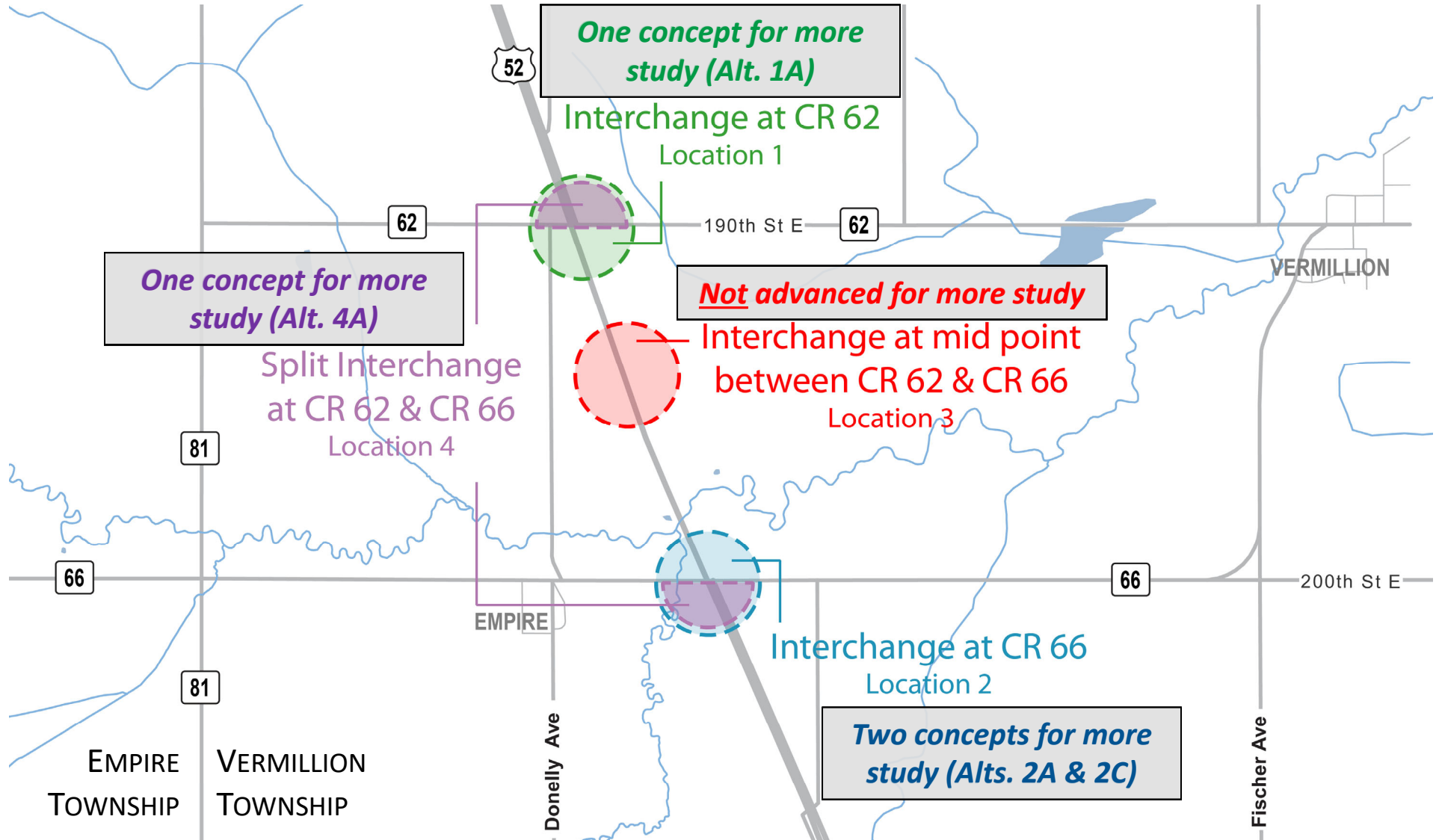


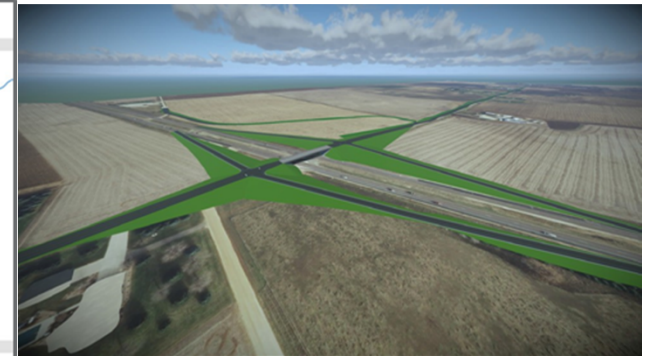
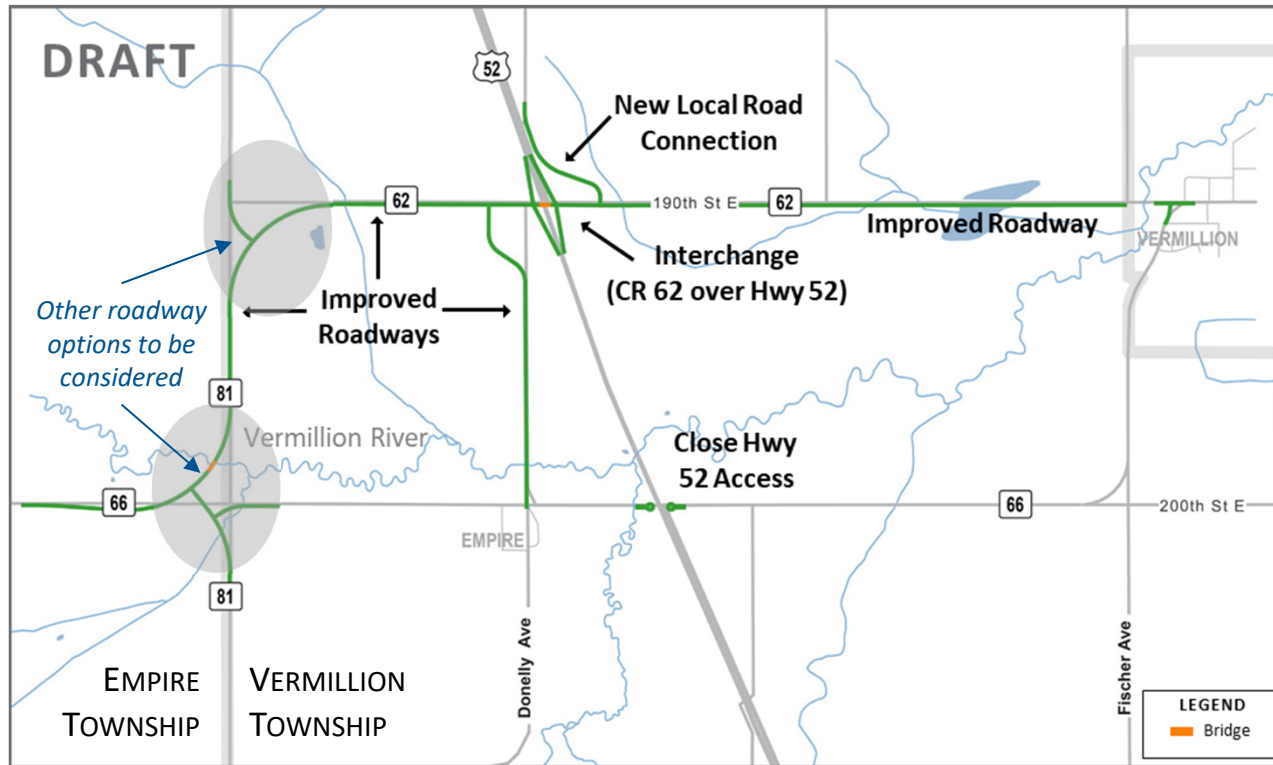
CP 66-15: County Roads 66 & 62 Area Interchange at Highway 52, Vermillion Township

Summary of Interchange Location Alternatives

Eight concepts developed and reviewed; four concepts advanced for more study.



Alternative 1A – CR 62 Over Hwy 52 Concept



Rendering of interchange area
Preliminary - subject to change

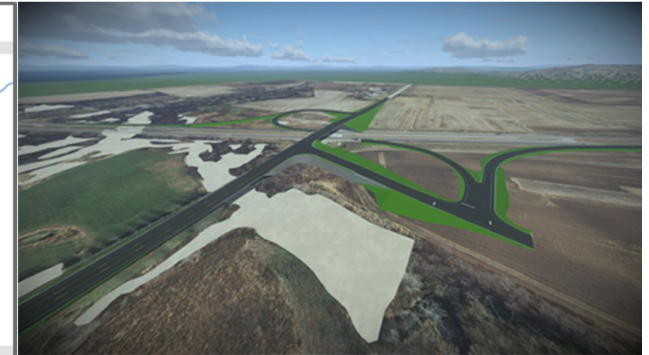
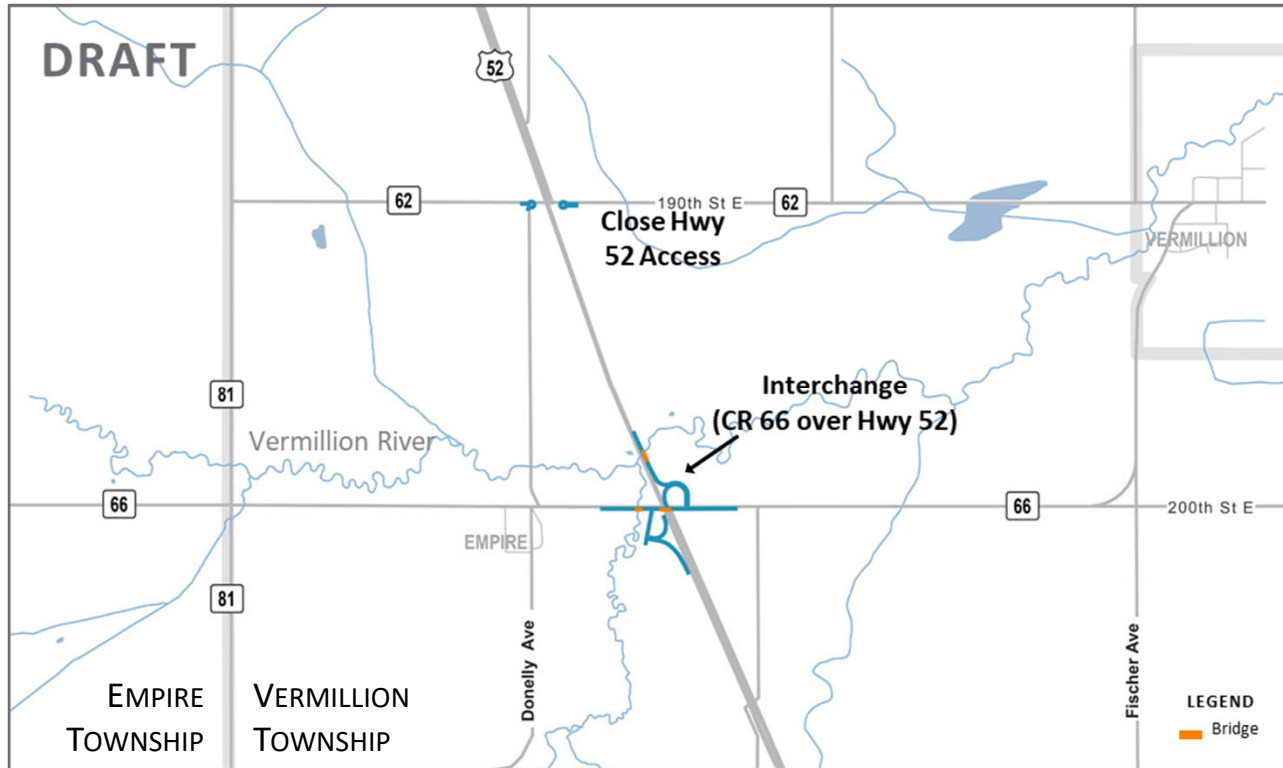
Costs, Impacts, & Next Steps

Description and Characteristics

- Interchange at CR 62 & Hwy 52, with connecting roadway improvements
- Shifts the main east-west County Road to the north
- Efficient connection between Hwy 52 and the City of Vermillion, vicinity
- Avoids and minimizes impacts at CR 66 & Hwy 52, including impacts to adjacent properties, the S. Branch of Vermillion River, and small-acreage farming

- High cost range
- High overall property impacts
- Trout stream impacts
- Avoids farmland impacts at CR 66 & Hwy 52
- Opportunities to further manage impacts and costs, esp. impacts to trout stream

Alternative 2A – CR 66 Over Hwy 52 Concept



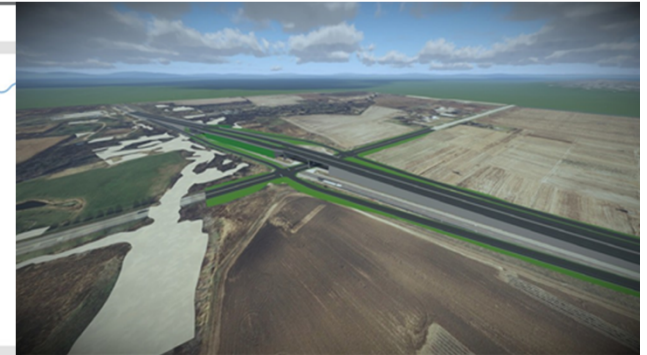
Rendering of interchange area
Preliminary - subject to change

Costs, Impacts, & Next Steps

Description and Characteristics

- Low-moderate cost range
 - Limited overall property impacts
 - Trout stream impacts
 - Farmland impacts at CR 66 & Hwy 52
 - Complex location with limited opportunities to further manage costs and impacts
- Interchange at CR 66 & Hwy 52 – ramps in the SW and NE quadrants
 - Less overall roadway construction vs. Alt. 1A, at CR 62
 - Less direct Hwy 52 connection for City of Vermillion and vicinity (vs. Alt. 1A)
 - Impacts to CR 66 & Hwy 52 area properties, the S. Branch of Vermillion River, and small-acreage farming

Alternative 2C – Hwy 52 Over CR 66 Concept



Rendering of interchange area
Preliminary - subject to change

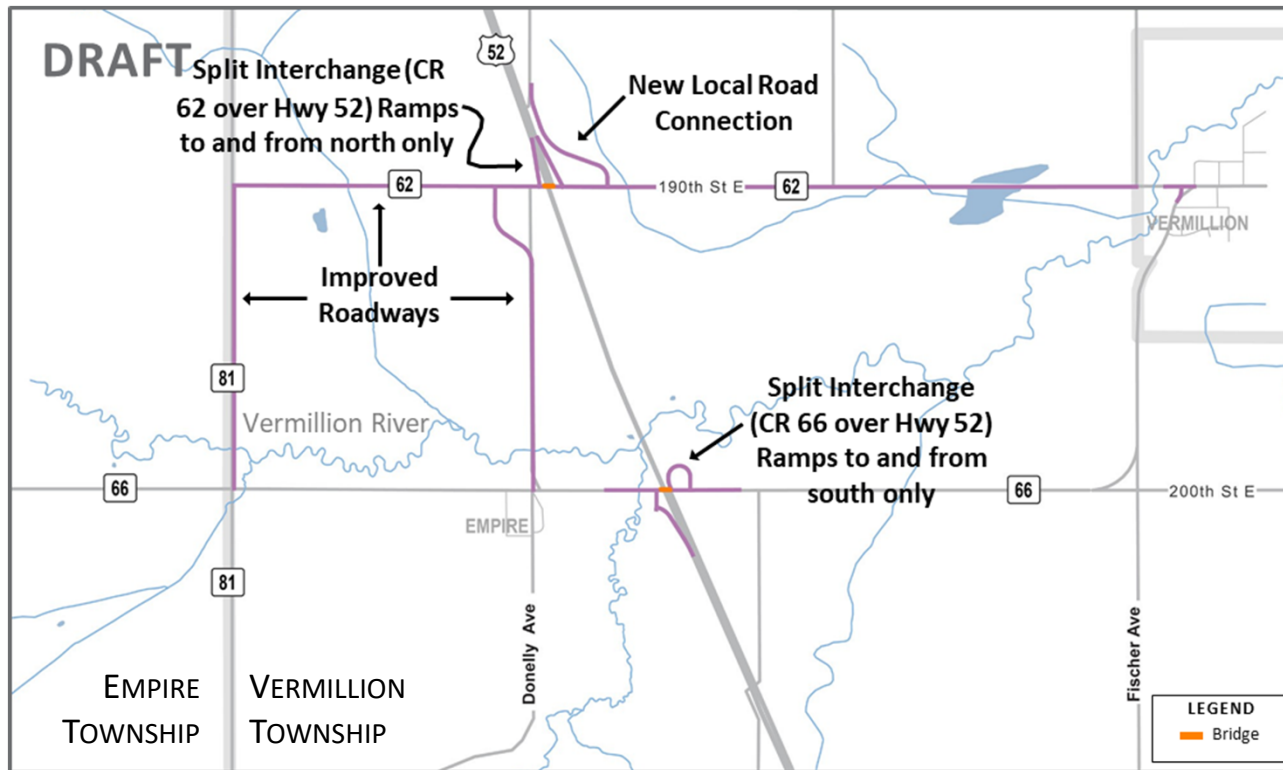
Costs, Impacts, & Next Steps

Description and Characteristics

- Interchange at CR 66 & Hwy 52 – “tight diamond” with Hwy 52 over CR 62
- Roadway reconstruction along Hwy 52; limits farmland impacts
- Less direct Hwy 52 connection for City of Vermillion and vicinity (vs. Alt. 1A)
- Limited impacts to CR 66 & Hwy 52 area properties, the Vermillion River, and small-acreage farming

- High cost range
- Limited overall property impacts
- Trout stream impacts
- Farmland impacts at CR 66 & Hwy 52
- Complex location with some opportunities to manage costs and impacts, esp. impacts to the HAFA Farm

Alternative 4A – Split Interchange Concept



Rendering of interchange area
Preliminary - subject to change

Costs, Impacts, & Next Steps

Description and Characteristics

- Partial interchange at both CR 62 and CR 66, with both crossroads over Hwy 52
- Interchange features at both sites, plus connecting roadway improvements
- Good and flexible connections for the City of Vermillion and others in area
- Impacts at both locations, including impacts to the Vermillion River and small-acreage farming

- High cost range
- High overall property impacts
- Trout stream impacts
- Farmland impacts at CR 66 & Hwy 52
- Large-scale alternative, but with some opportunities to manage costs and impacts